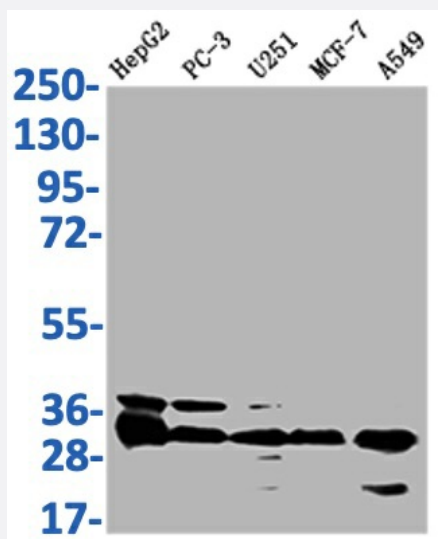


RecomAb™

TMEM192 recombinant monoclonal antibody, clone 21G8

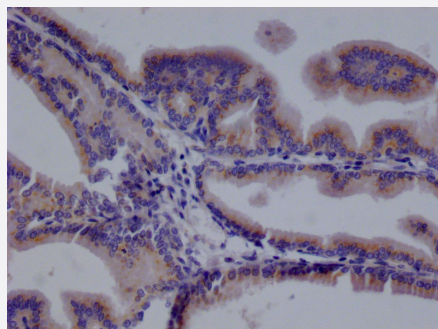
Catalog # RAB07642 Size 100 uL

Applications



Western Blot

Western Blot analysis of Lane 1: HepG2 whole cell lysate; Lane 2: Hela whole cell lysate; Lane3: PC-3 whole cell lysate; Lane 4: HEK293 whole cell lysate.



Immunohistochemistry

Immunohistochemistry image of TMEM192 recombinant monoclonal antibody, clone 21G8 diluted at 1:100 and staining in paraffin-embedded human prostate tissue performed on a Leica Bond™ system.

Specification

Product Description	Rabbit recombinant monoclonal antibody raised against human TMEM192.
Antibody Species	Rabbit
Immunogen	Original antibody is raised against a synthetic peptide corresponding to human TMEM192.

Reactivity	Human
Form	Liquid
Purification	Affinity chromatography purification
Isotype	IgG
Recommend Usage	ELISA Immunohistochemistry(1:50-1:200) Western Blot(1:500-1:2000) The optimal working dilution should be determined by the end user.
Storage Buffer	In PBS, pH7.4 (150 mM NaCl, 0.02% sodium azide and 50% glycerol)
Storage Instruction	Store at -20°C or -80°C. Aliquot to avoid repeated freezing and thawing.
Note	This product contains sodium azide: a POISONOUS AND HAZARDOUS SUBSTANCE which should be handled by trained staff only.

Applications

- Western Blot

Western Blot analysis of Lane 1: HepG2 whole cell lysate; Lane 2: Hela whole cell lysate; Lane3: PC-3 whole cell lysate; Lane 4: HEK293 whole cell lysate.

- Immunohistochemistry

Immunohistochemistry image of TMEM192 recombinant monoclonal antibody, clone 21G8 diluted at 1:100 and staining in paraffin-embedded human prostate tissue performed on a Leica BondTM system.

- Enzyme-linked Immunoabsorbent Assay

Gene Info — TMEM192

Entrez GeneID	201931
Protein Accession#	Q8IY95
Gene Name	TMEM192
Gene Alias	FLJ38482
Gene Description	transmembrane protein 192

Gene Ontology

[Hyperlink](#)

Other Designations

-