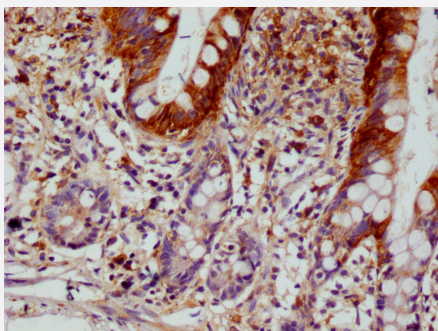


RecomAb™

SCIN recombinant monoclonal antibody, clone 12B11

Catalog # RAB07625 Size 100 uL

Applications



Immunohistochemistry

Immunohistochemistry image of SCIN recombinant monoclonal antibody, clone 12B11 diluted at 1:100 and staining in paraffin-embedded human small intestine tissue performed on a Leica Bond™ system.

Specification

Product Description	Rabbit recombinant monoclonal antibody raised against human SCIN.
Antibody Species	Rabbit
Immunogen	Original antibody is raised against a synthetic peptide corresponding to human SCIN.
Reactivity	Human
Form	Liquid
Purification	Affinity chromatography purification
Isotype	IgG
Recommend Usage	ELISA Immunohistochemistry(1:50-1:200) The optimal working dilution should be determined by the end user.
Storage Buffer	In PBS, pH7.4 (150 mM NaCl, 0.02% sodium azide and 50% glycerol)
Storage Instruction	Store at -20°C or -80°C. Aliquot to avoid repeated freezing and thawing.

Note

This product contains sodium azide: a POISONOUS AND HAZARDOUS SUBSTANCE which should be handled by trained staff only.

Applications

- Immunohistochemistry

Immunohistochemistry image of SCIN recombinant monoclonal antibody, clone 12B11 diluted at 1:100 and staining in paraffin-embedded human small intestine tissue performed on a Leica Bond™ system.

- Enzyme-linked Immunoabsorbent Assay

Gene Info — SCIN

Entrez GeneID	85477
Protein Accession#	Q9Y6U3
Gene Name	SCIN
Gene Alias	KIAA1905
Gene Description	scinderin
Gene Ontology	Hyperlink
Other Designations	adseverin

Pathway

- [Fc gamma R-mediated phagocytosis](#)

- [Regulation of actin cytoskeleton](#)