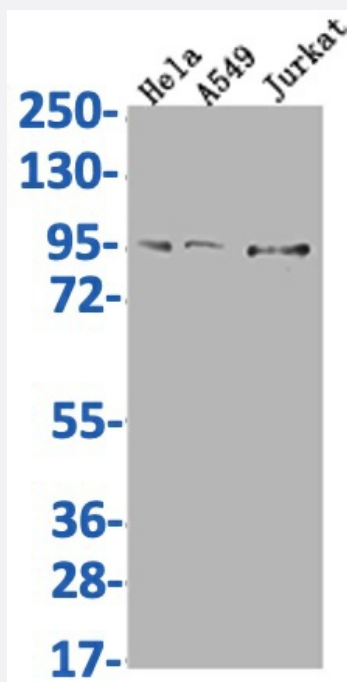


RecomAb™

# CARS recombinant monoclonal antibody, clone 8B11

Catalog # RAB07613      Size 100 uL

## Applications



### Western Blot

Western Blot analysis of Lane 1: HeLa whole cell lysate; Lane 2: A549 whole cell lysate; Lane3: Jurkat whole cell lysate.

## Specification

|                     |  |
|---------------------|--|
| Product Description | Rabbit recombinant monoclonal antibody raised against human CARS.                    |
| Antibody Species    | Rabbit   |
| Immunogen           | Original antibody is raised against a synthetic peptide corresponding to human CARS. |
| Reactivity          | Human  |
| Form                | Liquid   |
| Purification        | Affinity chromatography purification   |

|                     |  |
|---------------------|--|
| Isotype             | IgG  |
| Recommend Usage     | ELISA<br>Western Blot(1:500-1:2000)<br>The optimal working dilution should be determined by the end user.              |
| Storage Buffer      | In PBS, pH7.4 (150 mM NaCl, 0.02% sodium azide and 50% glycerol)   |
| Storage Instruction | Store at -20°C or -80°C.<br>Aliquot to avoid repeated freezing and thawing.  |
| Note                | This product contains sodium azide: a POISONOUS AND HAZARDOUS SUBSTANCE which should be handled by trained staff only. |

## Applications

- Western Blot

Western Blot analysis of Lane 1: Hela whole cell lysate; Lane 2: A549 whole cell lysate; Lane3: Jurkat whole cell lysate.

- Enzyme-linked Immunoabsorbent Assay

## Gene Info — CARS

|                    |  |
|--------------------|--|
| Entrez GeneID      | <a href="#">833</a>  |
| Protein Accession# | <a href="#">P49589</a>   |
| Gene Name          | CARS   |
| Gene Alias         | CARS1, CYSRS, MGC:11246  |
| Gene Description   | cysteinyI-tRNA synthetase  |
| Omim ID            | <a href="#">123859</a>   |
| Gene Ontology      | <a href="#">Hyperlink</a>  |
| Gene Summary       | This gene encodes a class 1 aminoacyl-tRNA synthetase, cysteinyI-tRNA synthetase. Each of the twenty aminoacyl-tRNA synthetases catalyzes the aminoacylation of a specific tRNA or tRNA isoaccepting family with the cognate amino acid. This gene is one of several located near the imprinted gene domain of 11p15.5, an important tumor-suppressor gene region. Alterations in this region have been associated with the Beckwith-Wiedemann syndrome, Wilms tumor, rhabdomyosarcoma, adrenocortical carcinoma, and lung, ovarian, and breast cancer. Alternative splicing of this gene results in multiple transcript variants encoding distinct isoforms. [provided by RefSeq] |

**Other Designations**

OTTHUMP00000012605|cysteine tRNA ligase 1, cytoplasmic|cysteine translase|cysteine-tRNA li  
gase

**Pathway**

- [Aminoacyl-tRNA biosynthesis](#)

**Disease**

- [Diabetes Mellitus](#)
- [Diabetic Nephropathies](#)
- [Genetic Predisposition to Disease](#)
- [Kidney Failure](#)
- [Proteinuria](#)