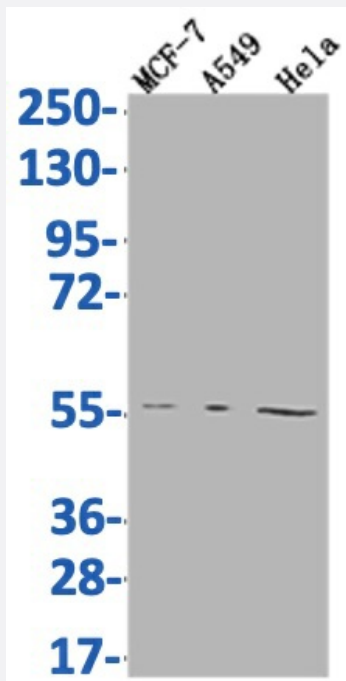


RecomAb™

FADS1 recombinant monoclonal antibody, clone 7A10

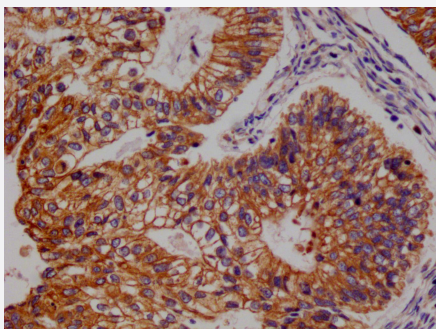
Catalog # RAB07612 Size 100 uL

Applications



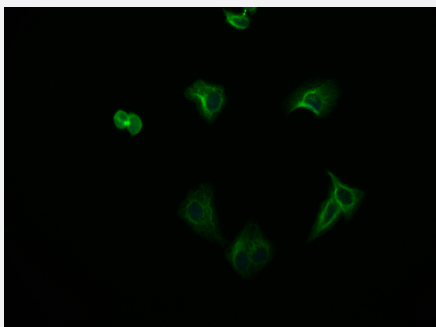
Western Blot

Western Blot analysis of Lane 1: MCF-7 whole cell lysate; Lane 2: A549 whole cell lysate; Lane3: HeLa whole cell lysate.



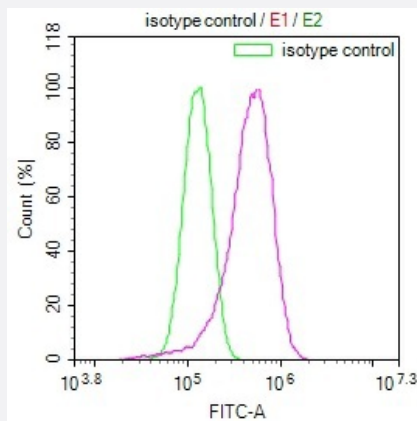
Immunohistochemistry

Immunohistochemistry image of AHCY recombinant monoclonal antibody, clone 13H8 diluted at 1:100 and staining in paraffin-embedded human endometrial cancer performed on a Leica Bond™ system.



Immunofluorescence

Immunofluorescence staining of HepG2 Cells with AHCY recombinant monoclonal antibody, clone 13H8 at 1:50, counter-stained with DAPI.



Flow Cytometry

Overlay Peak curve showing HepG2 cells stained with AHCY recombinant monoclonal antibody, clone 13H8 (red line) at 1:100.

Specification

Product Description	Rabbit recombinant monoclonal antibody raised against human FADS1.
Antibody Species	Rabbit
Immunogen	Original antibody is raised against a synthetic peptide corresponding to human FADS1.
Reactivity	Human
Form	Liquid
Purification	Affinity chromatography purification
Isotype	IgG
Recommend Usage	ELISA Flow Cytometry(1:50-1:200) Immunohistochemistry(1:50-1:200) Immunofluorescence(1:20-1:200) Western Blot(1:500-1:2000) The optimal working dilution should be determined by the end user.
Storage Buffer	In PBS, pH7.4 (150 mM NaCl, 0.02% sodium azide and 50% glycerol)
Storage Instruction	Store at -20°C or -80°C. Aliquot to avoid repeated freezing and thawing.
Note	This product contains sodium azide: a POISONOUS AND HAZARDOUS SUBSTANCE which should be handled by trained staff only.

Applications

- Western Blot

Western Blot analysis of Lane 1: MCF-7 whole cell lysate; Lane 2: A549 whole cell lysate; Lane3: Hela whole cell lysate.

- Immunohistochemistry

Immunohistochemistry image of AHCY recombinant monoclonal antibody, clone 13H8 diluted at 1:100 and staining in paraffin-embedded human endometrial cancer performed on a Leica Bond™ system.

- Immunofluorescence

Immunofluorescence staining of HepG2 Cells with AHCY recombinant monoclonal antibody, clone 13H8 at 1:50, counter-stained with DAPI.

- Enzyme-linked Immunoabsorbent Assay

- Flow Cytometry

Overlay Peak curve showing HepG2 cells stained with AHCY recombinant monoclonal antibody, clone 13H8 (red line) at 1:100.

Gene Info — FADS1

Entrez GeneID [3992](#)

Protein Accession# [O60427](#)

Gene Name FADS1

Gene Alias D5D, FADS6, FADSD5, FLJ38956, FLJ90273, LLCDL1, TU12

Gene Description fatty acid desaturase 1

Omim ID [606148](#)

Gene Ontology [Hyperlink](#)

Gene Summary The protein encoded by this gene is a member of the fatty acid desaturase (FADS) gene family. Desaturase enzymes regulate unsaturation of fatty acids through the introduction of double bonds between defined carbons of the fatty acyl chain. FADS family members are considered fusion products composed of an N-terminal cytochrome b5-like domain and a C-terminal multiple membrane-spanning desaturase portion, both of which are characterized by conserved histidine motifs. This gene is clustered with family members FADS1 and FADS2 at 11q12-q13.1; this cluster is thought to have arisen evolutionarily from gene duplication based on its similar exon/intron organization. [provided by RefSeq]

Other Designations delta(5) desaturase|delta-5 desaturase|delta-5 fatty acid desaturase|linoleoyl-CoA desaturase (delta-6-desaturase)-like 1

Pathway

- [Biosynthesis of unsaturated fatty acids](#)

Disease

- [Attention Deficit Disorder with Hyperactivity](#)
- [Cardiovascular Diseases](#)
- [Cognition](#)
- [Coronary Artery Disease](#)
- [Depression](#)
- [Depressive Disorder](#)
- [Dermatitis](#)
- [Diabetes Mellitus](#)
- [Dyslipidemias](#)
- [Edema](#)
- [Genetic Predisposition to Disease](#)
- [Hyperlipidemia](#)
- [Hypersensitivity](#)
- [Inflammation](#)
- [Macular Degeneration](#)
- [Neoplasms](#)
- [Rhinitis](#)
- [Syndrome](#)