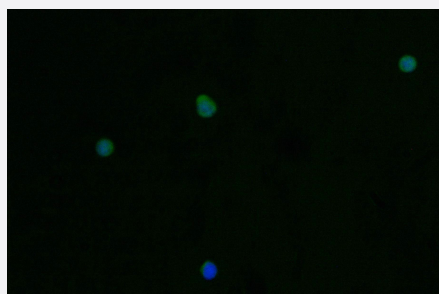


RecomAb™

PRSS2 recombinant monoclonal antibody, clone 12H7

Catalog # RAB07610 Size 100 uL

Applications



Immunofluorescence

Immunofluorescence staining of Jurkat Cells with PRSS2 recombinant monoclonal antibody, clone 12H7 at 1:50, counter-stained with DAPI.

Specification

Product Description	Rabbit recombinant monoclonal antibody raised against human PRSS2.
Antibody Species	Rabbit
Immunogen	Original antibody is raised against a synthetic peptide corresponding to human PRSS2.
Reactivity	Human
Form	Liquid
Purification	Affinity chromatography purification
Isotype	IgG
Recommend Usage	ELISA Immunofluorescence(1:20-1:200) The optimal working dilution should be determined by the end user.
Storage Buffer	In PBS, pH7.4 (150 mM NaCl, 0.02% sodium azide and 50% glycerol)
Storage Instruction	Store at -20°C or -80°C. Aliquot to avoid repeated freezing and thawing.

Note

This product contains sodium azide: a POISONOUS AND HAZARDOUS SUBSTANCE which should be handled by trained staff only.

Applications

- Immunofluorescence

Immunofluorescence staining of Jurkat Cells with PRSS2 recombinant monoclonal antibody, clone 12H7 at 1:50, counter-stained with DAPI.

- Enzyme-linked Immunoabsorbent Assay

Gene Info — PRSS2

Entrez GeneID [5645](#)

Protein Accession# [P07478](#)

Gene Name PRSS2

Gene Alias MGC111183, MGC120174, TRY2, TRY8, TRYP2

Gene Description protease, serine, 2 (trypsin 2)

Omim ID [601564](#)

Gene Ontology [Hyperlink](#)

Gene Summary This gene encodes a trypsinogen, which is a member of the trypsin family of serine proteases. This enzyme is secreted by the pancreas and cleaved to its active form in the small intestine. It is active on peptide linkages involving the carboxyl group of lysine or arginine. This gene and several other trypsinogen genes are localized to the T cell receptor beta locus on chromosome 7. [provided by RefSeq]

Other Designations anionic trypsinogen|protease serine 2 preproprotein|protease, serine, 2|protease, serine, 2, preproprotein|trypsin 2|trypsin II|trypsinogen 2

Pathway

- [Neuroactive ligand-receptor interaction](#)

Disease

- [Adenocarcinoma](#)
- [Chronic Disease](#)
- [Genetic Predisposition to Disease](#)
- [Pancreatic cancer](#)
- [Pancreatic Neoplasms](#)
- [Pancreatitis](#)