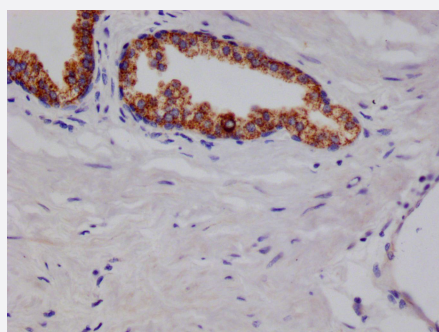


RecomAb™

ARG2 recombinant monoclonal antibody, clone 9A4

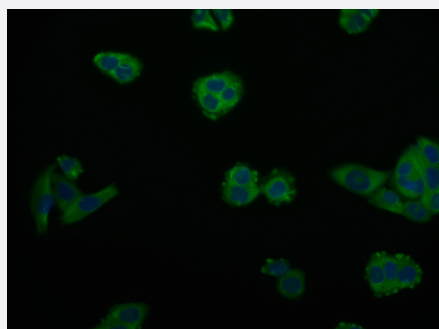
Catalog # RAB07607 Size 100 uL

Applications



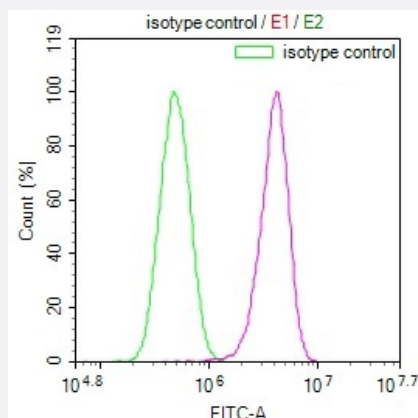
Immunohistochemistry

Immunohistochemistry image of ARG2 recombinant monoclonal antibody, clone 9A4 diluted at 1:100 and staining in paraffin-embedded human prostate cancer performed on a Leica Bond™ system.



Immunofluorescence

Immunofluorescence staining of PC-3 Cells with ARG2 recombinant monoclonal antibody, clone 9A4 at 1:50, counter-stained with DAPI.



Flow Cytometry

Overlay Peak curve showing PC-3 cells stained with ARG2 recombinant monoclonal antibody, clone 9A4 (red line) at 1:100.

Specification

Product Description	Rabbit recombinant monoclonal antibody raised against human ARG2.
Antibody Species	Rabbit
Immunogen	Original antibody is raised against a synthetic peptide corresponding to human ARG2.
Reactivity	Human
Form	Liquid
Purification	Affinity chromatography purification
Isotype	IgG
Recommend Usage	ELISA Flow Cytometry(1:50-1:200) Immunohistochemistry(1:50-1:200) Immunofluorescence(1:20-1:200) The optimal working dilution should be determined by the end user.
Storage Buffer	In PBS, pH7.4 (150 mM NaCl, 0.02% sodium azide and 50% glycerol)
Storage Instruction	Store at -20°C or -80°C. Aliquot to avoid repeated freezing and thawing.
Note	This product contains sodium azide: a POISONOUS AND HAZARDOUS SUBSTANCE which should be handled by trained staff only.

Applications

- Immunohistochemistry

Immunohistochemistry image of ARG2 recombinant monoclonal antibody, clone 9A4 diluted at 1:100 and staining in paraffin-embedded human prostate cancer performed on a Leica Bond™ system.

- Immunofluorescence

Immunofluorescence staining of PC-3 Cells with ARG2 recombinant monoclonal antibody, clone 9A4 at 1:50, counter-stained with DAPI.

- Enzyme-linked Immunoabsorbent Assay

- Flow Cytometry

Overlay Peak curve showing PC-3 cells stained with ARG2 recombinant monoclonal antibody, clone 9A4 (red line) at 1:100.

Gene Info — ARG2

Entrez GeneID [384](#)

Protein Accession# [P78540](#)

Gene Name ARG2

Gene Alias -

Gene Description arginase, type II

Omim ID [107830](#)

Gene Ontology [Hyperlink](#)

Gene Summary Arginase catalyzes the hydrolysis of arginine to ornithine and urea. At least two isoforms of mammalian arginase exists (types I and II) which differ in their tissue distribution, subcellular localization, immunologic crossreactivity and physiologic function. The type II isoform encoded by this gene, is located in the mitochondria and expressed in extra-hepatic tissues, especially kidney. The physiologic role of this isoform is poorly understood; it is thought to play a role in nitric oxide and polyamine metabolism. Transcript variants of the type II gene resulting from the use of alternative polyadenylation sites have been described. [provided by RefSeq]

Other Designations A-II|L-arginine amidinohydrolase|L-arginine ureahydrolase|kidney arginase|nonhepatic arginase

Pathway

- [Arginine and proline metabolism](#)
- [Biosynthesis of alkaloids derived from ornithine](#)
- [Metabolic pathways](#)

Disease

- [Asthma](#)
- [Genetic Predisposition to Disease](#)
- [Hypersensitivity](#)
- [Lung Neoplasms](#)
- [Pulmonary Disease](#)