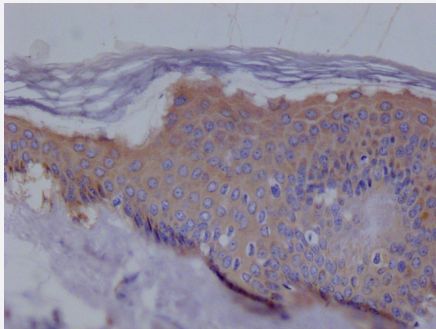


RecomAb™

EZR recombinant monoclonal antibody, clone 7F11

Catalog # RAB07604 Size 100 uL

Applications



Immunohistochemistry

Immunohistochemistry image of EZR recombinant monoclonal antibody, clone 7F11 diluted at 1:100 and staining in paraffin-embedded human skin tissue performed on a Leica Bond™ system.

Specification

Product Description	Rabbit recombinant monoclonal antibody raised against human EZR.
Antibody Species	Rabbit
Immunogen	Original antibody is raised against a synthetic peptide corresponding to human EZR.
Reactivity	Human
Form	Liquid
Purification	Affinity chromatography purification
Isotype	IgG
Recommend Usage	ELISA Immunohistochemistry(1:50-1:200) The optimal working dilution should be determined by the end user.
Storage Buffer	In PBS, pH7.4 (150 mM NaCl, 0.02% sodium azide and 50% glycerol)
Storage Instruction	Store at -20°C or -80°C. Aliquot to avoid repeated freezing and thawing.

Note

This product contains sodium azide: a POISONOUS AND HAZARDOUS SUBSTANCE which should be handled by trained staff only.

Applications

- Immunohistochemistry

Immunohistochemistry image of EZR recombinant monoclonal antibody, clone 7F11 diluted at 1:100 and staining in paraffin-embedded human skin tissue performed on a Leica Bond™ system.

- Enzyme-linked Immunoabsorbent Assay

Gene Info — EZR

Entrez GeneID [7430](#)

Protein Accession# [P15311](#)

Gene Name EZR

Gene Alias CVIL, CVL, DKFZp762H157, FLJ26216, MGC1584, VIL2

Gene Description ezrin

Omim ID [123900](#)

Gene Ontology [Hyperlink](#)

Gene Summary The cytoplasmic peripheral membrane protein encoded by this gene functions as a protein-tyrosine kinase substrate in microvilli. As a member of the ERM protein family, this protein serves as an intermediate between the plasma membrane and the actin cytoskeleton. This protein plays a key role in cell surface structure adhesion, migration and organization, and it has been implicated in various human cancers. A pseudogene located on chromosome 3 has been identified for this gene. Alternatively spliced variants have also been described for this gene. [provided by RefSeq]

Other Designations OTTHUMP00000017506|OTTHUMP00000017507|cytovillin 2|villin 2 (ezrin)

Pathway

- [Leukocyte transendothelial migration](#)
- [Pathogenic Escherichia coli infection - EHEC](#)
- [Regulation of actin cytoskeleton](#)

Disease

- [Asthma](#)
- [Cardiovascular Diseases](#)
- [Diabetes Mellitus](#)
- [Edema](#)
- [Genetic Predisposition to Disease](#)
- [Hypersensitivity](#)
- [Lung Neoplasms](#)
- [Ovarian Neoplasms](#)
- [Pulmonary Disease](#)
- [Tobacco Use Disorder](#)
- [Urinary Bladder Neoplasms](#)
- [Werner syndrome](#)