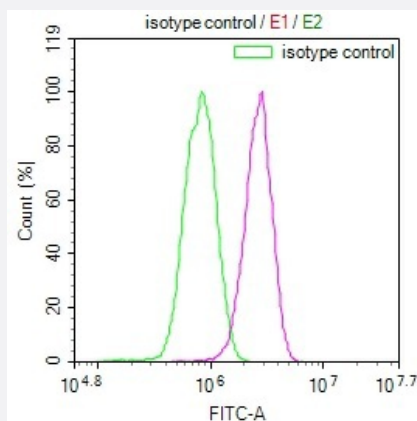


RecomAb™

# KLRG1 recombinant monoclonal antibody, clone 8E11

Catalog # RAB07596      Size 100 uL

## Applications



### Flow Cytometry

Overlay Peak curve showing A549 cells stained with KLRG1 recombinant monoclonal antibody, clone 8E11 (red line) at 1:100.

## Specification

<b>Product Description</b>	Rabbit recombinant monoclonal antibody raised against human KLRG1.
<b>Antibody Species</b>	Rabbit
<b>Immunogen</b>	Original antibody is raised against a synthetic peptide corresponding to human KLRG1.
<b>Reactivity</b>	Human
<b>Form</b>	Liquid
<b>Purification</b>	Affinity chromatography purification
<b>Isotype</b>	IgG
<b>Recommend Usage</b>	ELISA Flow Cytometry(1:50-1:200) The optimal working dilution should be determined by the end user.
<b>Storage Buffer</b>	In PBS, pH7.4 (150 mM NaCl, 0.02% sodium azide and 50% glycerol)

**Storage Instruction**

Store at -20°C or -80°C.  
Aliquot to avoid repeated freezing and thawing.

**Note**

This product contains sodium azide: a POISONOUS AND HAZARDOUS SUBSTANCE which should be handled by trained staff only.

## Applications

- Enzyme-linked Immunoabsorbent Assay
- Flow Cytometry

Overlay Peak curve showing A549 cells stained with KLRG1 recombinant monoclonal antibody, clone 8E11 (red line) at 1:100.

## Gene Info — KLRG1

**Entrez GeneID** [10219](#)

**Protein Accession#** [Q96E93](#)

**Gene Name** KLRG1

**Gene Alias** 2F1, CLEC15A, MAFA, MAFA-2F1, MAFA-L, MAFA-LIKE, MGC13600

**Gene Description** killer cell lectin-like receptor subfamily G, member 1

**Omim ID** [604874](#)

**Gene Ontology** [Hyperlink](#)

**Gene Summary** Natural killer (NK) cells are lymphocytes that can mediate lysis of certain tumor cells and virus-infected cells without previous activation. They can also regulate specific humoral and cell-mediated immunity. The protein encoded by this gene belongs to the killer cell lectin-like receptor (KLR) family, which is a group of transmembrane proteins preferentially expressed in NK cells. Studies in mice suggested that the expression of this gene may be regulated by MHC class I molecules. Alternatively spliced transcript variants have been reported, but their full-length natures have not yet been determined. [provided by RefSeq]

**Other Designations** C-type lectin domain family 15, member A|mast cell function-associated antigen (ITIM-containing)

## Disease

- [Tobacco Use Disorder](#)