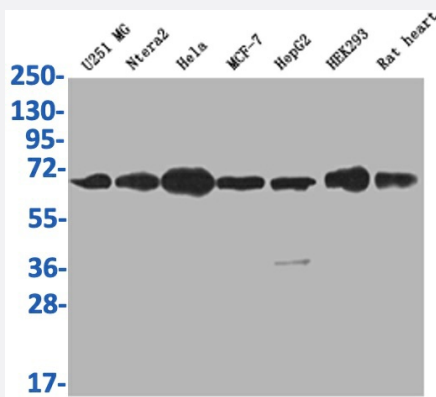


RecomAb™

# CBX2 recombinant monoclonal antibody, clone 24A2

Catalog # RAB07595      Size 100 uL

## Applications



## Western Blot

Western Blot analysis of Lane 1: U251 whole cell lysate; Lane 2: Ntera-2 whole cell lysate; Lane3: HeLa whole cell lysate; Lane 4: MCF-7 whole cell lysate; Lane 5: HepG2 whole cell lysate; Lane 6: HEK293 whole cell lysate; Lane 7: Rat heart tissue.

## Specification

Product Description	Rabbit recombinant monoclonal antibody raised against human and rat CBX2.
Antibody Species	Rabbit
Immunogen	Original antibody is raised against a synthetic peptide corresponding to human CBX2.
Reactivity	Human, Rat
Form	Liquid
Purification	Affinity chromatography purification
Isotype	IgG
Recommend Usage	ELISA Western Blot(1:500-1:2000) The optimal working dilution should be determined by the end user.
Storage Buffer	In PBS, pH7.4 (150 mM NaCl, 0.02% sodium azide and 50% glycerol)

**Storage Instruction**

Store at -20°C or -80°C.  
Aliquot to avoid repeated freezing and thawing.

**Note**

This product contains sodium azide: a POISONOUS AND HAZARDOUS SUBSTANCE which should be handled by trained staff only.

## Applications

- Western Blot

Western Blot analysis of Lane 1: U251 whole cell lysate; Lane 2: Ntera-2 whole cell lysate; Lane3: Hela whole cell lysate; Lane 4: MCF-7 whole cell lysate; Lane 5: HepG2 whole cell lysate; Lane 6: HEK293 whole cell lysate; Lane 7: Rat heart tissue.

- Enzyme-linked Immunoabsorbent Assay

## Gene Info — CBX2

**Entrez GeneID**[84733](#)**Protein Accession#**[Q14781](#)**Gene Name**

CBX2

**Gene Alias**

CDCA6, M33, MGC10561

**Gene Description**

chromobox homolog 2 (Pc class homolog, Drosophila)

**Omim ID**[602770](#)**Gene Ontology**[Hyperlink](#)**Gene Summary**

O

**Other Designations**

M33 polycomb-like|cell division cycle associated 6|chromobox homolog 2|modifier 3