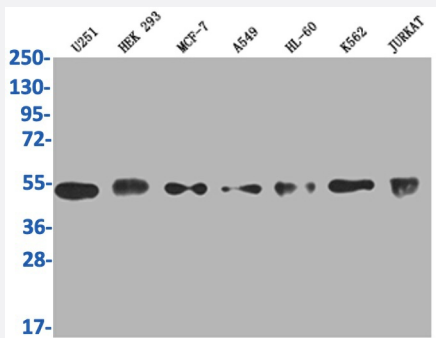


RecomAb™

COPS3 recombinant monoclonal antibody, clone 3F9

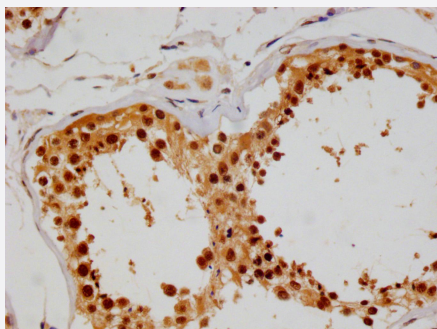
Catalog # RAB07591 Size 100 uL

Applications



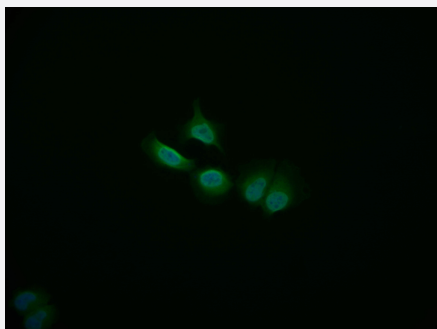
Western Blot

Western Blot analysis of Lane 1: U251 whole cell lysate; Lane 2: HEK 293 whole cell lysate; Lane3: MCF-7 whole cell lysate; Lane 4: A549 whole cell lysate; Lane 5: HL-60 whole cell lysate; Lane 6: K562 whole cell lysate; Lane 7: Jurkat whole cell lysate.



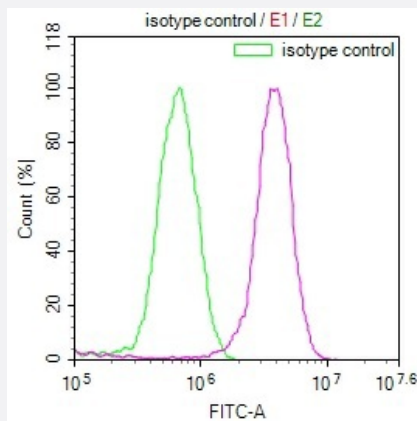
Immunohistochemistry

Immunohistochemistry image of COPS3 recombinant monoclonal antibody, clone 3F9 diluted at 1:100 and staining in paraffin-embedded human testis tissue performed on a Leica Bond™ system.



Immunofluorescence

Immunofluorescence staining of A549 Cells with COPS3 recombinant monoclonal antibody, clone 3F9 at 1:50, counter-stained with DAPI.



Flow Cytometry

Overlay Peak curve showing MCF7 cells stained with COPS3 recombinant monoclonal antibody, clone 3F9 (red line) at 1:100.

Specification

Product Description	Rabbit recombinant monoclonal antibody raised against human COPS3.
Antibody Species	Rabbit
Immunogen	Original antibody is raised against a synthetic peptide corresponding to human COPS3.
Reactivity	Human
Form	Liquid
Purification	Affinity chromatography purification
Isotype	IgG
Recommend Usage	ELISA Flow Cytometry(1:50-1:200) Immunohistochemistry(1:50-1:200) Immunofluorescence(1:20-1:200) Western Blot(1:500-1:2000) The optimal working dilution should be determined by the end user.
Storage Buffer	In PBS, pH7.4 (150 mM NaCl, 0.02% sodium azide and 50% glycerol)
Storage Instruction	Store at -20°C or -80°C. Aliquot to avoid repeated freezing and thawing.
Note	This product contains sodium azide: a POISONOUS AND HAZARDOUS SUBSTANCE which should be handled by trained staff only.

Applications

- Western Blot

Western Blot analysis of Lane 1: U251 whole cell lysate; Lane 2: HEK 293 whole cell lysate; Lane3: MCF-7 whole cell lysate; Lane 4: A549 whole cell lysate; Lane 5: HL-60 whole cell lysate; Lane 6: K562 whole cell lysate; Lane 7: Jurkat whole cell lysate.

- Immunohistochemistry

Immunohistochemistry image of COPS3 recombinant monoclonal antibody, clone 3F9 diluted at 1:100 and staining in paraffin-embedded human testis tissue performed on a Leica BondTM system.

- Immunofluorescence

Immunofluorescence staining of A549 Cells with COPS3 recombinant monoclonal antibody, clone 3F9 at 1:50, counter-stained with DAPI.

- Enzyme-linked Immunoabsorbent Assay

- Flow Cytometry

Overlay Peak curve showing MCF7 cells stained with COPS3 recombinant monoclonal antibody, clone 3F9 (red line) at 1:100.

Gene Info — COPS3

Entrez GeneID [8533](#)

Protein Accession# [Q9UNS2](#)

Gene Name COPS3

Gene Alias CSN3, SGN3

Gene Description COP9 constitutive photomorphogenic homolog subunit 3 (Arabidopsis)

Omim ID [604665](#)

Gene Ontology [Hyperlink](#)

Gene Summary The protein encoded by this gene possesses kinase activity that phosphorylates regulators involved in signal transduction. It phosphorylates I kappa-Balpha, p105, and c-Jun. It acts as a docking site for complex-mediated phosphorylation. The gene is located within the Smith-Magenis syndrome region on chromosome 17. [provided by RefSeq]

Other Designations COP9 complex subunit 3|COP9 constitutive photomorphogenic homolog subunit 3|JAB1-containing signalosome subunit 3