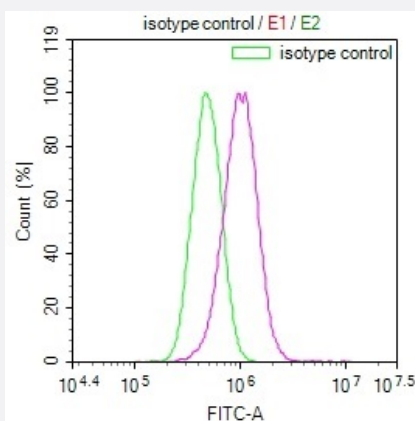


RecomAb™

RAB27A recombinant monoclonal antibody, clone 2E8

Catalog # RAB07590 Size 100 uL

Applications



Flow Cytometry

Flow cytometry shows PC3 cells stained with RAB27A recombinant monoclonal antibody, clone 2E8 (Cat # RAB07590)(red line). The cells were fixed in 4% formaldehyde and permeated by 0.2% TritonX-100. Then 10% normal goat serum to block non-specific protein-protein interactions followed by the antibody (1ug/1*10⁶cells) for 45min at 4°C. The secondary antibody used was FITC-conjugated Goat Anti-rabbit IgG(H+L) at 1:200 dilution for 35min at 4°C. Control antibody (green line) was rabbit IgG (1ug/1*10⁶cells) used under the same conditions. Acquisition of >10,000 events was performed.

Specification

| | |
|----------------------------|---|
| Product Description | Rabbit recombinant monoclonal antibody raised against human RAB27A. |
| Antibody Species | Rabbit |
| Immunogen | Original antibody is raised against a synthetic peptide corresponding to human RAB27A. |
| Reactivity | Human |
| Form | Liquid |
| Purification | Affinity chromatography purification |
| Isotype | IgG |
| Recommend Usage | ELISA Flow Cytometry(1:50-1:200) The optimal working dilution should be determined by the end user. |
| Storage Buffer | In PBS, pH7.4 (150 mM NaCl, 0.02% sodium azide and 50% glycerol) |

Storage Instruction

Store at -20°C or -80°C.
Aliquot to avoid repeated freezing and thawing.

Note

This product contains sodium azide: a POISONOUS AND HAZARDOUS SUBSTANCE which should be handled by trained staff only.

Applications

- Enzyme-linked Immunoabsorbent Assay

- Flow Cytometry

Flow cytometry shows PC3 cells stained with RAB27A recombinant monoclonal antibody, clone 2E8 (Cat # RAB07590)(red line). The cells were fixed in 4% formaldehyde and permeated by 0.2% TritonX-100. Then 10% normal goat serum to block non-specific protein-protein interactions followed by the antibody (1ug/1*10⁶cells) for 45min at 4°C. The secondary antibody used was FITC-conjugated Goat Anti-rabbit IgG(H+L) at 1:200 dilution for 35min at 4°C. Control antibody (green line) was rabbit IgG (1ug/1*10⁶cells) used under the same conditions. Acquisition of >10,000 events was performed.

Gene Info — RAB27A

Entrez GeneID[5873](#)**Protein Accession#**[P51159](#)**Gene Name**

RAB27A

Gene Alias

GS2, HsT18676, MGC117246, RAB27, RAM

Gene Description

RAB27A, member RAS oncogene family

Omim ID[603868](#) [607624](#)**Gene Ontology**[Hyperlink](#)**Gene Summary**

The protein encoded by this gene belongs to the small GTPase superfamily, Rab family. The protein is membrane-bound and may be involved in protein transport and small GTPase mediated signal transduction. Mutations in this gene are associated with Griscelli syndrome type 2. Alternative splicing occurs at this locus and four transcript variants encoding the same protein have been identified. [provided by RefSeq]

Other Designations

GTP-binding protein Ram|Ras-related protein Rab-27A

Disease

- [Arthritis](#)
- [Genetic Predisposition to Disease](#)
- [Lymphohistiocytosis](#)