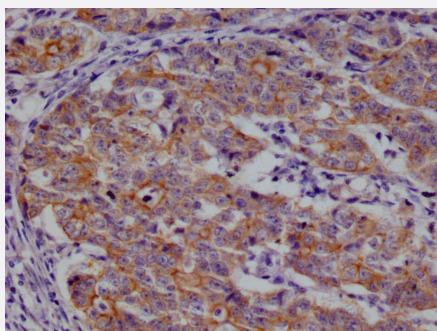


RecomAb™

CSN2 recombinant monoclonal antibody, clone 29D6

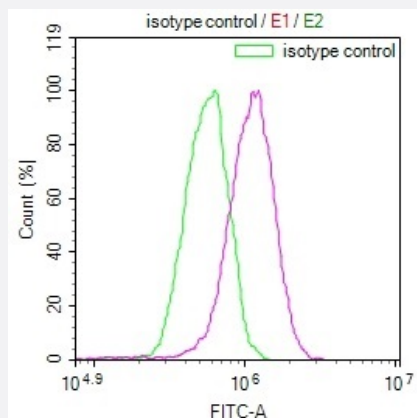
Catalog # RAB07589 Size 100 uL

Applications



Immunohistochemistry (Formalin/PFA-fixed paraffin-embedded sections)

Immunohistochemical analysis of paraffin-embedded human colon cancer using CSN2 recombinant monoclonal antibody, clone 29D6 (Cat # RAB07589) on a Leica Bond™ system. After dewaxing and hydration, antigen retrieval was mediated by high pressure in a citrate buffer (pH 6.0). Section was blocked with 10% normal goat serum 30min at RT. Then primary antibody (1% BSA) was incubated at 4°C overnight. The primary is detected by a Goat anti-rabbit IgG polymer labeled by HRP and visualized using 0.05% DAB.



Flow Cytometry

Flow cytometry shows HepG2 cells stained with CSN2 recombinant monoclonal antibody, clone 29D6 (Cat # RAB07589)(red line). The cells were incubated in 10% normal goat serum to block non-specific protein-protein interactions followed by the antibody (1ug/1*10⁶cells) for 45min at 4°C. The secondary antibody used was FITC-conjugated Goat Anti-rabbit IgG(H+L) at 1:200 dilution for 35min at 4°C. Control antibody (green line) was rabbit IgG (1ug/1*10⁶cells) used under the same conditions. Acquisition of >10,000 events was performed.

Specification

| | |
|---------------------|--|
| Product Description | Rabbit recombinant monoclonal antibody raised against human CSN2. |
| Antibody Species | Rabbit |
| Immunogen | Original antibody is raised against a synthetic peptide corresponding to human CSN2. |

| | |
|---------------------|--|
| Reactivity | Human |
| Form | Liquid |
| Purification | Affinity chromatography purification |
| Isotype | IgG |
| Recommend Usage | ELISA Flow Cytometry(1:50-1:200) Immunohistochemistry (1:50-1:200) The optimal working dilution should be determined by the end user. |
| Storage Buffer | In PBS, pH7.4 (150 mM NaCl, 0.02% sodium azide and 50% glycerol) |
| Storage Instruction | Store at -20°C or -80°C. Aliquot to avoid repeated freezing and thawing. |
| Note | This product contains sodium azide: a POISONOUS AND HAZARDOUS SUBSTANCE which should be handled by trained staff only. |

Applications

- Immunohistochemistry (Formalin/PFA-fixed paraffin-embedded sections)

Immunohistochemical analysis of paraffin-embedded human colon cancer using CSN2 recombinant monoclonal antibody, clone 29D6 (Cat # RAB07589) on a Leica BondTM system. After dewaxing and hydration, antigen retrieval was mediated by high pressure in a citrate buffer (pH 6.0). Section was blocked with 10% normal goat serum 30min at RT. Then primary antibody (1% BSA) was incubated at 4°C overnight. The primary is detected by a Goat anti-rabbit IgG polymer labeled by HRP and visualized using 0.05% DAB.

- Enzyme-linked Immunoabsorbent Assay

- Flow Cytometry

Flow cytometry shows HepG2 cells stained with CSN2 recombinant monoclonal antibody, clone 29D6 (Cat # RAB07589)(red line). The cells were incubated in 10% normal goat serum to block non-specific protein-protein interactions followed by the antibody (1 μ g/1*10⁶cells) for 45min at 4°C. The secondary antibody used was FITC-conjugated Goat Anti-rabbit IgG(H+L) at 1:200 dilution for 35min at 4°C. Control antibody (green line) was rabbit IgG (1 μ g/1*10⁶cells) used under the same conditions. Acquisition of >10,000 events was performed.

Gene Info — CSN2

Entrez GeneID [1447](#)

Protein Accession# [P05814](#)

| | |
|--------------------|---------------------------|
| Gene Name | CSN2 |
| Gene Alias | CASB |
| Gene Description | casein beta |
| Omim ID | 115460 |
| Gene Ontology | Hyperlink |
| Other Designations | - |