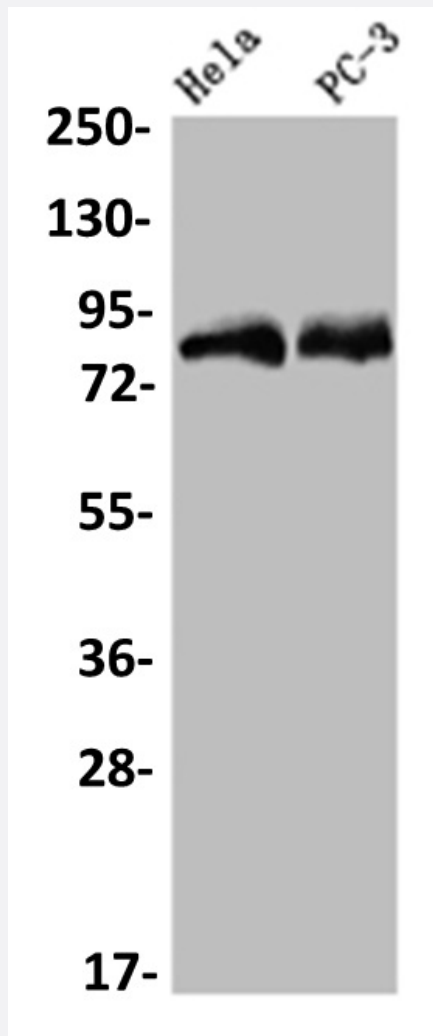


RecomAb™

SENP1 recombinant monoclonal antibody, clone 25H2

Catalog # RAB07585 Size 100 uL

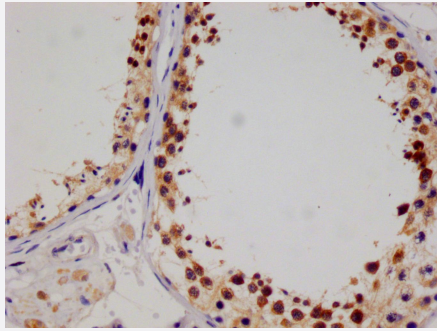
Applications



Western Blot (Cell lysate)

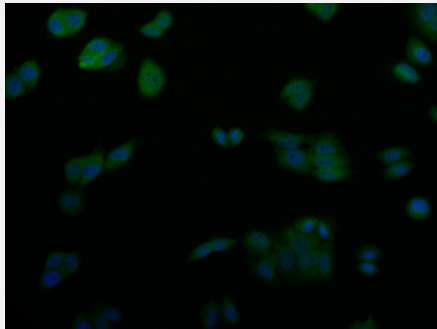
Western blot analysis of HeLa whole cell lysate, PC3 whole cell lysate with SENP1 recombinant monoclonal antibody, clone 25H2 (Cat # RAB07585).

Immunohistochemistry (Formalin/PFA-fixed paraffin-embedded sections)



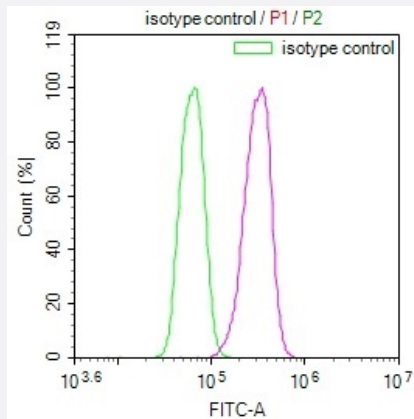
Immunohistochemical analysis of paraffin-embedded human testis tissue using SENP1 recombinant monoclonal antibody, clone 25H2 (Cat # RAB07585) on a Leica Bond™ system. After dewaxing and hydration, antigen retrieval was mediated by high pressure in a citrate buffer (pH 6.0). Section was blocked with 10% normal goat serum 30min at RT. Then primary antibody (1% BSA) was incubated at 4°C overnight. The primary is detected by a Goat anti-rabbit IgG polymer labeled by HRP and visualized using 0.05% DAB.

Immunofluorescence



Immunofluorescent staining of PC-3 Cells with SENP1 recombinant monoclonal antibody, clone 25H2 (Cat # RAB07585), counter-stained with DAPI. The cells were fixed in 4% formaldehyde and blocked in 10% normal Goat Serum. The cells were then incubated with the antibody overnight at 4°C. The secondary antibody was Alexa Fluor 527-conjugated AffiniPure Goat Anti-Rabbit IgG(H+L).

Flow Cytometry



Flow cytometry shows K562 cells stained with SENP1 recombinant monoclonal antibody, clone 25H2 (Cat # RAB07585)(red line). The cells were fixed in 4% formaldehyde and permeated by 0.2% TritonX-100. Then 10% normal goat serum to block non-specific protein-protein interactions followed by the antibody (1ug/1*10⁶cells) for 45min at 4°C. The secondary antibody used was FITC-conjugated Goat Anti-rabbit IgG(H+L) at 1:200 dilution for 35min at 4°C. Control antibody (green line) was rabbit IgG (1ug/1*10⁶cells) used under the same conditions. Acquisition of >10,000 events was performed.

Specification

Product Description	Rabbit recombinant monoclonal antibody raised against human SENP1.
Antibody Species	Rabbit
Immunogen	Original antibody is raised against a synthetic peptide corresponding to human SENP1.
Theoretical MW (kDa)	Calculated MW: 74
Reactivity	Human

Form	Liquid
Purification	Affinity chromatography purification
Isotype	IgG
Recommend Usage	ELISA Flow Cytometry(1:50-1:200) Immunofluorescence (1:50-1:200) Immunohistochemistry (1:50-1:200) Western Blot (1:500-1:2000) The optimal working dilution should be determined by the end user.
Storage Buffer	In PBS, pH7.4 (150 mM NaCl, 0.02% sodium azide and 50% glycerol)
Storage Instruction	Store at -20°C or -80°C. Aliquot to avoid repeated freezing and thawing.
Note	This product contains sodium azide: a POISONOUS AND HAZARDOUS SUBSTANCE which should be handled by trained staff only.

Applications

- Western Blot (Cell lysate)

Western blot analysis of Hela whole cell lysate, PC3 whole cell lysate with SENP1 recombinant monoclonal antibody, clone 25H2 (Cat # RAB07585).

- Immunohistochemistry (Formalin/PFA-fixed paraffin-embedded sections)

Immunohistochemical analysis of paraffin-embedded human testis tissue using SENP1 recombinant monoclonal antibody, clone 25H2 (Cat # RAB07585) on a Leica Bond™ system. After dewaxing and hydration, antigen retrieval was mediated by high pressure in a citrate buffer (pH 6.0). Section was blocked with 10% normal goat serum 30min at RT. Then primary antibody (1% BSA) was incubated at 4°C overnight. The primary is detected by a Goat anti-rabbit IgG polymer labeled by HRP and visualized using 0.05% DAB.

- Immunofluorescence

Immunofluorescent staining of PC-3 Cells with SENP1 recombinant monoclonal antibody, clone 25H2 (Cat # RAB07585), counter-stained with DAPI. The cells were fixed in 4% formaldehyde and blocked in 10% normal Goat Serum. The cells were then incubated with the antibody overnight at 4°C. The secondary antibody was Alexa Fluor 527-conjugated AffiniPure Goat Anti-Rabbit IgG(H+L).

- Enzyme-linked Immunoabsorbent Assay

- Flow Cytometry

Flow cytometry shows K562 cells stained with SENP1 recombinant monoclonal antibody, clone 25H2 (Cat # RAB07585)(red line). The cells were fixed in 4% formaldehyde and permeated by 0.2% TritonX-100. Then 10% normal goat serum to block non-specific protein-protein interactions followed by the antibody (1ug/1*10⁶cells) for 45min at 4°C. The secondary antibody used was FITC-conjugated Goat Anti-rabbit IgG(H+L) at 1:200 dilution for 35min at 4°C. Control antibody (green line) was rabbit IgG (1ug/1*10⁶cells) used under the same conditions. Acquisition of >10,000 events was performed.

Gene Info — SENP1

Entrez GeneID	29843
Protein Accession#	Q9P0U3
Gene Name	SENP1
Gene Alias	SuPr-2
Gene Description	SUMO1/sentrin specific peptidase 1
Gene Ontology	Hyperlink
Gene Summary	The covalent modification of proteins by the small ubiquitin (UBB; MIM 191339)-like protein SUMO (see SUMO1, MIM 601912) is implicated in the regulation of nucleocytoplasmic transport, genomic stability, gene transcription, and other processes. Sumoylation is catalyzed on target lysine residues by a multienzyme process and is reversed by desumoylating enzymes such as SENP1 (Yamaguchi et al., 2005 [PubMed 15923632]).[supplied by OMIM]
Other Designations	SUMO1/sentrin specific protease 1 sentrin/SUMO-specific protease sentrin/SUMO-specific protease 1