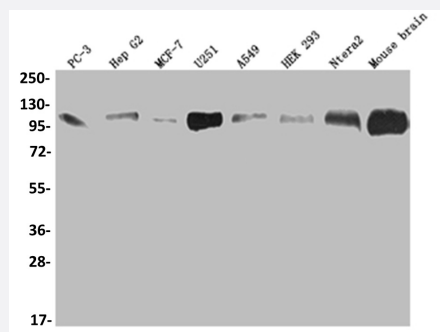


RecomAb™

ALCAM recombinant monoclonal antibody, clone 21B9

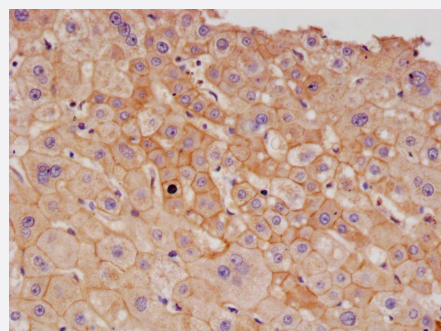
Catalog # RAB07572 Size 100 uL

Applications



Western Blot

Western blot analysis of PC3 whole cell lysate, HepG2 whole cell lysate, MCF-7 whole cell lysate, U251 whole cell lysate, A549 whole cell lysate, HEK293 whole cell lysate, Ntera-2 whole cell lysate, Mouse brain tissue with ALCAM recombinant monoclonal antibody, clone 21B9 (Cat # RAB07572).



Immunohistochemistry (Formalin/PFA-fixed paraffin-embedded sections)

Immunohistochemical analysis of paraffin-embedded human liver cancer using ALCAM recombinant monoclonal antibody, clone 21B9 (Cat # RAB07572) on a Leica Bond™ system. After dewaxing and hydration, antigen retrieval was mediated by high pressure in a citrate buffer (pH 6.0). Section was blocked with 10% normal goat serum 30min at RT. Then primary antibody (1% BSA) was incubated at 4°C overnight. The primary is detected by a Goat anti-rabbit IgG polymer labeled by HRP and visualized using 0.05% DAB.

Specification

Product Description	Rabbit recombinant monoclonal antibody raised against human ALCAM.
Antibody Species	Rabbit
Immunogen	Original antibody is raised against a synthetic peptide corresponding to human ALCAM.
Theoretical MW (kDa)	Calculated MW: 66, 6
Reactivity	Human, Mouse

Form	Liquid
Purification	Affinity chromatography purification
Isotype	IgG
Recommend Usage	ELISA Immunohistochemistry (1:50-1:200) Western Blot (1:500-1:2000) The optimal working dilution should be determined by the end user.
Storage Buffer	In PBS, pH7.4 (150 mM NaCl, 0.02% sodium azide and 50% glycerol)
Storage Instruction	Store at -20°C or -80°C. Aliquot to avoid repeated freezing and thawing.
Note	This product contains sodium azide: a POISONOUS AND HAZARDOUS SUBSTANCE which should be handled by trained staff only.

Applications

- Western Blot

Western blot analysis of PC3 whole cell lysate, HepG2 whole cell lysate, MCF-7 whole cell lysate, U251 whole cell lysate, A549 whole cell lysate, HEK293 whole cell lysate, Ntera-2 whole cell lysate, Mouse brain tissue with ALCAM recombinant monoclonal antibody, clone 21B9 (Cat # RAB07572).

- Immunohistochemistry (Formalin/PFA-fixed paraffin-embedded sections)

Immunohistochemical analysis of paraffin-embedded human liver cancer using ALCAM recombinant monoclonal antibody, clone 21B9 (Cat # RAB07572) on a Leica Bond™ system. After dewaxing and hydration, antigen retrieval was mediated by high pressure in a citrate buffer (pH 6.0). Section was blocked with 10% normal goat serum 30min at RT. Then primary antibody (1% BSA) was incubated at 4°C overnight. The primary is detected by a Goat anti-rabbit IgG polymer labeled by HRP and visualized using 0.05% DAB.

- Enzyme-linked Immunoabsorbent Assay

Gene Info — ALCAM

Entrez GeneID	214
Protein Accession#	Q13740
Gene Name	ALCAM
Gene Alias	CD166, FLJ38514, MEMD, MGC71733

Gene Description	activated leukocyte cell adhesion molecule
Omim ID	601662
Gene Ontology	Hyperlink
Other Designations	activated leucocyte cell adhesion molecule

Pathway

- [Cell adhesion molecules \(CAMs\)](#)

Disease

- [Cadaver](#)
- [Cardiovascular Diseases](#)
- [Diabetes Mellitus](#)
- [Edema](#)