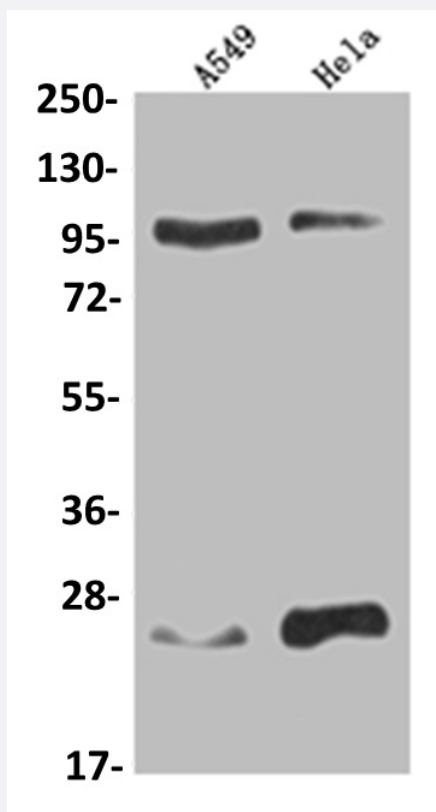


RecomAb™

## KDM1B recombinant monoclonal antibody, clone 15F3

Catalog # RAB07568      Size 100 uL

### Applications



#### Western Blot (Cell lysate)

Western blot analysis of A549 whole cell lysate, HeLa whole cell lysate with KDM1B recombinant monoclonal antibody, clone 15F3 (Cat # RAB07568).

### Specification

Product Description	Rabbit recombinant monoclonal antibody raised against human KDM1B.
Antibody Species	Rabbit
Immunogen	Original antibody is raised against a synthetic peptide corresponding to human KDM1B.
Theoretical MW (kDa)	Calculated MW: 93, 6
Reactivity	Human

Form	Liquid
Purification	Affinity chromatography purification
Isotype	IgG
Recommend Usage	ELISA Western Blot (1:500-1:2000) The optimal working dilution should be determined by the end user.
Storage Buffer	In PBS, pH7.4 (150 mM NaCl, 0.02% sodium azide and 50% glycerol)
Storage Instruction	Store at -20°C or -80°C. Aliquot to avoid repeated freezing and thawing.
Note	This product contains sodium azide: a POISONOUS AND HAZARDOUS SUBSTANCE which should be handled by trained staff only.

## Applications

- Western Blot (Cell lysate)

Western blot analysis of A549 whole cell lysate, Hela whole cell lysate with KDM1B recombinant monoclonal antibody, clone 15F3 (Cat # RAB07568).

- Enzyme-linked Immunoabsorbent Assay

## Gene Info — AOF1

Entrez GeneID	<a href="#">221656</a>
Protein Accession#	<a href="#">Q8NB78</a>
Gene Name	AOF1
Gene Alias	C6orf193, DKFZp686I0412, FLJ33898, FLJ34109, FLJ43328, bA204B7.3, dJ298J15.2
Gene Description	amine oxidase (flavin containing) domain 1
Gene Ontology	<a href="#">Hyperlink</a>
Gene Summary	flavin containing 1
Other Designations	OTTHUMP00000016075 OTTHUMP00000016077 OTTHUMP00000039336 amine oxidase, flavin containing 1