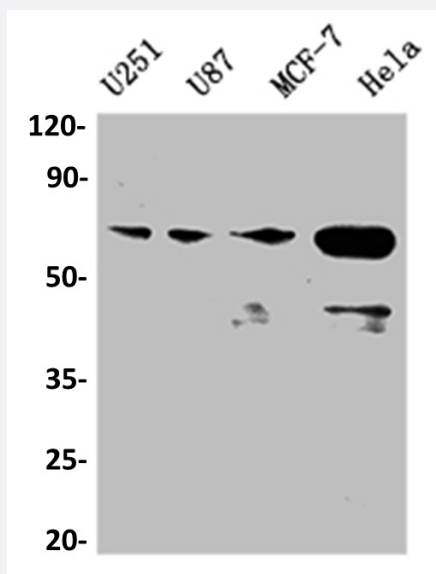


RecomAb™

STK3 recombinant monoclonal antibody, clone 3C3

Catalog # RAB07559 Size 100 uL

Applications



Western Blot (Cell lysate)

Western blot analysis of U251 whole cell lysate, U87 whole cell lysate, MCF-7 whole cell lysate, HeLa whole cell lysate with STK3 recombinant monoclonal antibody, clone 3C3 (Cat # RAB07559).

Specification

Product Description	Rabbit recombinant monoclonal antibody raised against human STK3.
Antibody Species	Rabbit
Immunogen	Original antibody is raised against a synthetic peptide corresponding to human STK3.
Theoretical MW (kDa)	Calculated MW: 57, 6
Reactivity	Human
Form	Liquid
Purification	Affinity chromatography purification
Isotype	IgG

Recommend Usage	ELISA Western Blot (1:500-1:2000) The optimal working dilution should be determined by the end user.
Storage Buffer	In PBS, pH7.4 (150 mM NaCl, 0.02% sodium azide and 50% glycerol)
Storage Instruction	Store at -20°C or -80°C. Aliquot to avoid repeated freezing and thawing.
Note	This product contains sodium azide: a POISONOUS AND HAZARDOUS SUBSTANCE which should be handled by trained staff only.

Applications

- Western Blot (Cell lysate)

Western blot analysis of U251 whole cell lysate, U87 whole cell lysate, MCF-7 whole cell lysate, Hela whole cell lysate with STK3 recombinant monoclonal antibody, clone 3C3 (Cat # RAB07559).

- Enzyme-linked Immunoabsorbent Assay

Gene Info — STK3

Entrez GeneID	6788
Protein Accession#	Q13188
Gene Name	STK3
Gene Alias	FLJ90748, KRS1, MST2
Gene Description	serine/threonine kinase 3 (STE20 homolog, yeast)
Omim ID	605030
Gene Ontology	Hyperlink
Gene Summary	Protein kinase activation is a frequent response of cells to treatment with growth factors, chemical stress, heat shock, or apoptosis-inducing agents. This protein kinase activation presumably allows cells to resist unfavorable environmental conditions. The yeast 'sterile 20' (Ste20) kinase acts upstream of the mitogen-activated protein kinase (MAPK) cascade that is activated under a variety of stress conditions. MST2 was identified as a kinase that is activated by the proapoptotic agents staurosporine and FAS ligand (MIM 134638) (Taylor et al., 1996 [PubMed 8816758]; Lee et al., 2001 [PubMed 11278283]).[supplied by OMIM]
Other Designations	serine/threonine kinase 3 (Ste20, yeast homolog)

Pathway

- [MAPK signaling pathway](#)