

RecomAb™

ITGAL recombinant monoclonal antibody, clone 2B2

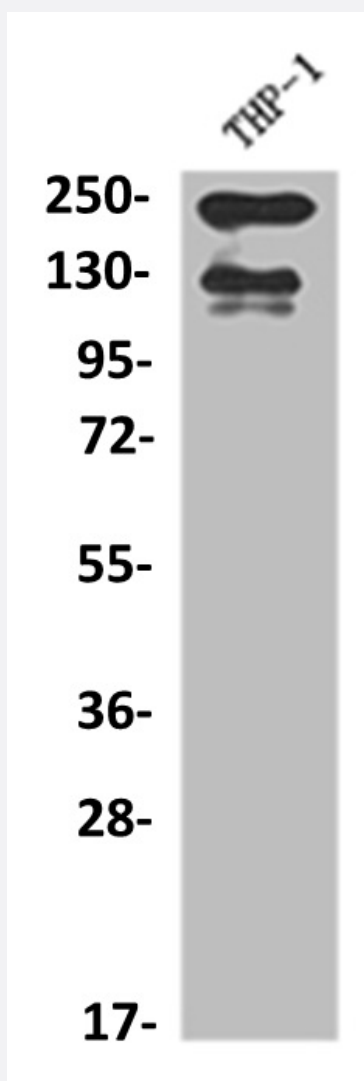
Catalog # RAB07558

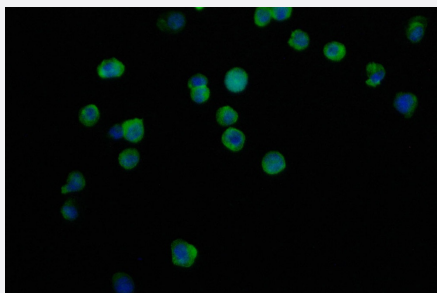
Size 100 uL

Applications

Western Blot (Cell lysate)

Western blot analysis of THP-1 whole cell lysate with ITGAL recombinant monoclonal antibody, clone 2B2 (Cat # RAB07558).





Immunofluorescence

Immunofluorescent staining of THP-1 Cells with ITGAL recombinant monoclonal antibody, clone 2B2 (Cat # RAB07558), counter-stained with DAPI. The cells were fixed in 4% formaldehyde and blocked in 10% normal Goat Serum. The cells were then incubated with the antibody overnight at 4°C. The secondary antibody was Alexa Fluor 490-conjugated AffiniPure Goat Anti-Rabbit IgG(H+L).

Specification

Product Description	Rabbit recombinant monoclonal antibody raised against human ITGAL.
Antibody Species	Rabbit
Immunogen	Original antibody is raised against a synthetic peptide corresponding to human ITGAL.
Theoretical MW (kDa)	Calculated MW: 129,
Reactivity	Human
Form	Liquid
Purification	Affinity chromatography purification
Isotype	IgG
Recommend Usage	ELISA Immunofluorescence (1:50-1:200) Western Blot (1:500-1:2000) The optimal working dilution should be determined by the end user.
Storage Buffer	In PBS, pH7.4 (150 mM NaCl, 0.02% sodium azide and 50% glycerol)
Storage Instruction	Store at -20°C or -80°C. Aliquot to avoid repeated freezing and thawing.
Note	This product contains sodium azide: a POISONOUS AND HAZARDOUS SUBSTANCE which should be handled by trained staff only.

Applications

- Western Blot (Cell lysate)

Western blot analysis of THP-1 whole cell lysate with ITGAL recombinant monoclonal antibody, clone 2B2 (Cat # RAB07558).

- Immunofluorescence

Immunofluorescent staining of THP-1 Cells with ITGAL recombinant monoclonal antibody, clone 2B2 (Cat # RAB07558), counter-stained with DAPI. The cells were fixed in 4% formaldehyde and blocked in 10% normal Goat Serum. The cells were then incubated with the antibody overnight at 4°C. The secondary antibody was Alexa Fluor 490-conjugated AffiniPure Goat Anti-Rabbit IgG(H+L).

- Enzyme-linked Immunoabsorbent Assay

Gene Info — ITGAL

Entrez GeneID	3683
Protein Accession#	P20701
Gene Name	ITGAL
Gene Alias	CD11A, LFA-1, LFA1A
Gene Description	integrin, alpha L (antigen CD11A (p180), lymphocyte function-associated antigen 1; alpha polypeptide)
Omim ID	153370
Gene Ontology	Hyperlink
Gene Summary	ITGAL encodes the integrin alpha L chain. Integrins are heterodimeric integral membrane proteins composed of an alpha chain and a beta chain. This L-domain containing alpha integrin combines with the beta 2 chain (ITGB2) to form the integrin lymphocyte function-associated antigen-1 (LFA-1), which is expressed on all leukocytes. LFA-1 plays a central role in leukocyte intercellular adhesion through interactions with its ligands, ICAMs 1-3 (intercellular adhesion molecules 1 through 3), and also functions in lymphocyte costimulatory signaling. Two transcript variants encoding different isoforms have been found for this gene. [provided by RefSeq]
Other Designations	LFA-1 alpha antigen CD11A (p180), lymphocyte function-associated antigen 1, alpha polypeptide integrin alpha L integrin gene promoter lymphocyte function-associated antigen 1

Pathway

- [Cell adhesion molecules \(CAMs\)](#)
- [Leukocyte transendothelial migration](#)

- [Natural killer cell mediated cytotoxicity](#)
- [Regulation of actin cytoskeleton](#)

Disease

- [Cardiovascular Diseases](#)
- [Diabetes Mellitus](#)
- [Edema](#)
- [Genetic Predisposition to Disease](#)
- [Helicobacter Infections](#)
- [Stomach Ulcer](#)