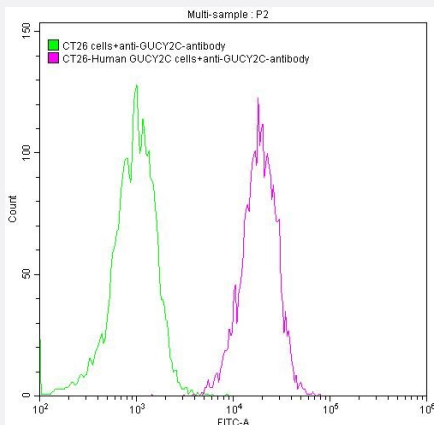


RecomAb™

# GUCY2C recombinant monoclonal antibody, clone 4G12

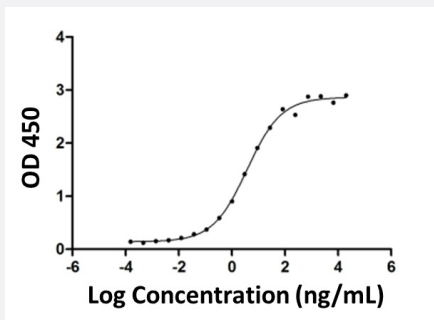
Catalog # RAB07556      Size 100 uL

## Applications



### Flow Cytometry

Flow cytometry analysis of untransfected CT26 cells (green line) and transfected human GUCY2C CT26 stable cells (red line) stained with GUCY2C recombinant monoclonal antibody, clone 4G12 (Cat # RAB07556) (2ug/1\*10<sup>6</sup>cells). The cells were washed and then followed by FITC-conjugated Goat Anti-Mouse IgG(H+L) antibody.



The ELISA results show that the binding activity of human GUCY2C with GUCY2C recombinant monoclonal antibody, clone 4G12 (Cat # RAB07556). Immobilized human GUCY2C (CSB-MP010053HUd9) at 5 ug/mL can bind GUCY2C recombinant monoclonal antibody, clone 4G12 (Cat # RAB07556), the EC<sub>50</sub> is 3.049-4.660 ng/mL.

## Specification

|                     |  |
|---------------------|--|
| Product Description | Mouse recombinant monoclonal antibody raised against human GUCY2C.       |
| Antibody Species    | Mouse  |
| Immunogen           | Original antibody is raised against recombinant protein of human GUCY2C. |
| Reactivity          | Human  |
| Form                | Liquid   |

|                                |   |
|--------------------------------|---|
| <b>Purification</b>            | Affinity chromatography purification  |
| <b>Isotype</b>                 | IgG2a   |
| <b>Quality Control Testing</b> | <p>Binding activity</p> <p>The ELISA results show that the binding activity of human GUCY2C with GUCY2C recombinant monoclonal antibody, clone 4G12 (Cat # RAB07556). Immobilized human GUCY2C (CSB-MP010053HU d9) at 5 ug/mL can bind GUCY2C recombinant monoclonal antibody, clone 4G12 (Cat # RAB07556), the EC<sub>50</sub> is 3.049-4.660 ng/mL.</p> |
| <b>Recommend Usage</b>         | <p>ELISA</p> <p>Flow Cytometry(1:20-1:200)</p> <p>The optimal working dilution should be determined by the end user.</p>  |
| <b>Storage Buffer</b>          | In PBS, pH7.4 (0.03% Proclin 300 and 50% glycerol)  |
| <b>Storage Instruction</b>     | <p>Store at -20°C or -80°C.</p> <p>Aliquot to avoid repeated freezing and thawing.</p>  |

## Applications

- Enzyme-linked Immunoabsorbent Assay
- Flow Cytometry

Flow cytometry analysis of untransfected CT26 cells (green line) and transfected human GUCY2C CT26 stable cells (red line) stained with GUCY2C recombinant monoclonal antibody, clone 4G12 (Cat # RAB07556)(2ug/1\*10<sup>6</sup>cells). The cells were washed and then followed by FITC-conjugated Goat Anti-Mouse IgG(H+L) antibody.

## Gene Info — GUCY2C

|                           |   |
|---------------------------|---|
| <b>Entrez GeneID</b>      | <a href="#">2984</a>                                    |
| <b>Protein Accession#</b> | <a href="#">P25092</a>                                  |
| <b>Gene Name</b>          | GUCY2C  |
| <b>Gene Alias</b>         | GUC2C, STAR   |
| <b>Gene Description</b>   | guanylate cyclase 2C (heat stable enterotoxin receptor) |
| <b>Omim ID</b>            | <a href="#">601330</a>                                  |
| <b>Gene Ontology</b>      | <a href="#">Hyperlink</a>                               |
| <b>Other Designations</b> | guanylyl cyclase C                                      |

## Pathway

- [Purine metabolism](#)