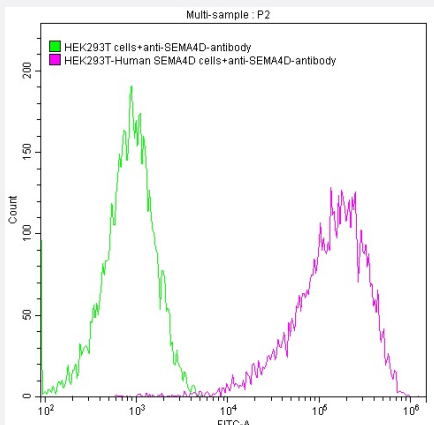


RecomAb™

SEMA4D recombinant monoclonal antibody, clone 21E8

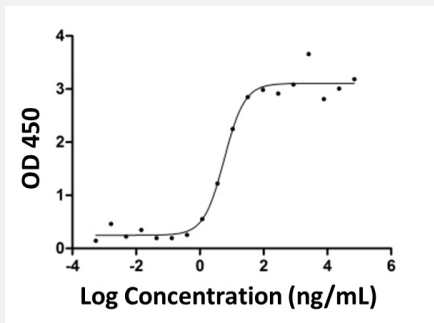
Catalog # RAB07548 Size 100 uL

Applications



Flow Cytometry

Flow cytometry analysis of untransfected HEK293T cells (green line) and transfected human SEMA4D HEK293T stable cells (red line) stained with SEMA4D recombinant monoclonal antibody, clone 21E8 (Cat # RAB07548) (2ug/1*10⁶cells). The cells were washed and then followed by FITC-conjugated anti-Human IgG Fc antibody.



The ELISA results show that the binding activity of human SEMA4D with SEMA4D recombinant monoclonal antibody, clone 21E8 (Cat # RAB07548). Immobilized human SEMA4D (CSB-MP835707HU) at 2 ug/mL can bind SEMA4D recombinant monoclonal antibody, clone 21E8 (Cat # RAB07548), the EC₅₀ is 1.082-4.805 ng/mL.

Specification

Product Description	Human recombinant monoclonal antibody raised against human SEMA4D.
Antibody Species	Human
Immunogen	Original antibody is raised against recombinant protein of human SEMA4D.
Reactivity	Human
Form	Liquid

Purification	Affinity chromatography purification
Isotype	IgG4(S228P)
Quality Control Testing	<p>Binding activity</p> <p>The ELISA results show that the binding activity of human SEMA4D with SEMA4D recombinant monoclonal antibody, clone 21E8 (Cat # RAB07548). Immobilized human SEMA4D (CSB-MP835707H U) at 2 ug/mL can bind SEMA4D recombinant monoclonal antibody, clone 21E8 (Cat # RAB07548), the EC₅₀ is 1.082-4.805 ng/mL.</p>
Recommend Usage	<p>ELISA</p> <p>Flow Cytometry(1:20-1:200)</p> <p>The optimal working dilution should be determined by the end user.</p>
Storage Buffer	In PBS, pH7.4 (0.03% Proclin 300 and 50% glycerol)
Storage Instruction	<p>Store at -20°C or -80°C.</p> <p>Aliquot to avoid repeated freezing and thawing.</p>

Applications

- Enzyme-linked Immunoabsorbent Assay
- Flow Cytometry

Flow cytometry analysis of untransfected HEK293T cells (green line) and transfected human SEMA4D HEK293T stable cells (red line) stained with SEMA4D recombinant monoclonal antibody, clone 21E8 (Cat # RAB07548)(2ug/1*10⁶cells). The cells were washed and then followed by FITC-conjugated anti-Human IgG Fc antibody.

Gene Info — SEMA4D

Entrez GeneID	10507
Protein Accession#	Q92854
Gene Name	SEMA4D
Gene Alias	C9orf164, CD100, FLJ33485, FLJ34282, FLJ39737, FLJ46484, M-sema-G, MGC169138, MG C169141, SEMAJ, coll-4
Gene Description	sema domain, immunoglobulin domain (Ig), transmembrane domain (TM) and short cytoplasmic domain, (semaphorin) 4D
Omim ID	601866
Gene Ontology	Hyperlink

Gene Summary

sema domain

Other Designations

OTTHUMP00000021622|OTTHUMP00000070035|sema domain, immunoglobulin domain (Ig), transmembrane domain (TM) and short cytoplasmic domain, 4D|semaphorin 4D

Pathway

- [Axon guidance](#)

Disease

- [Alzheimer Disease](#)
- [Genetic Predisposition to Disease](#)
- [Tobacco Use Disorder](#)