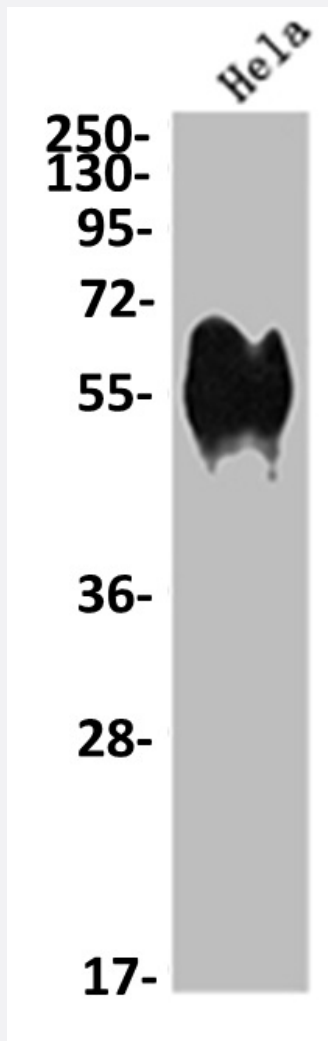


RecomAb™

## CD46 recombinant monoclonal antibody, clone 7D12

Catalog # RAB07545      Size 100 uL

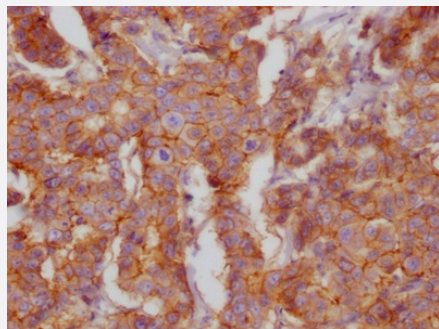
### Applications



### Western Blot (Cell lysate)

Western blot analysis of HeLa whole cell lysate with CD46 recombinant monoclonal antibody, clone 7D12 (Cat # RAB07545).

## Immunohistochemistry (Formalin/PFA-fixed paraffin-embedded sections)



Immunohistochemical analysis of paraffin-embedded human breast cancer with CD46 recombinant monoclonal antibody, clone 7D12 (Cat # RAB07545) on a Leica Bond™ system. After dewaxing and hydration, antigen retrieval was mediated by high pressure in a citrate buffer (pH 6.0). Section was blocked with 10% normal goat serum 30min at RT. Then primary antibody (1% BSA) was incubated at 4°C overnight. The primary is detected by a Goat anti-rabbit IgG polymer labeled by HRP and visualized using 0.05% DAB.

## Specification

<b>Product Description</b>	Rabbit recombinant monoclonal antibody raised against human CD46.
<b>Antibody Species</b>	Rabbit
<b>Immunogen</b>	Original antibody is raised against a synthetic peptide corresponding to human CD46.
<b>Theoretical MW (kDa)</b>	Calculated MW: 44, 4
<b>Reactivity</b>	Human
<b>Form</b>	Liquid
<b>Purification</b>	Affinity chromatography purification
<b>Isotype</b>	IgG
<b>Recommend Usage</b>	ELISA Immunohistochemistry (1:50-1:200) Western Blot (1:500-1:5000) The optimal working dilution should be determined by the end user.
<b>Storage Buffer</b>	In PBS, pH7.4 (150 mM NaCl, 0.02% sodium azide and 50% glycerol)
<b>Storage Instruction</b>	Store at -20°C or -80°C. Aliquot to avoid repeated freezing and thawing.
<b>Note</b>	This product contains sodium azide: a POISONOUS AND HAZARDOUS SUBSTANCE which should be handled by trained staff only.

## Applications

- Western Blot (Cell lysate)

Western blot analysis of Hela whole cell lysate with CD46 recombinant monoclonal antibody, clone 7D12 (Cat # RAB07545).

- Immunohistochemistry (Formalin/PFA-fixed paraffin-embedded sections)

Immunohistochemical analysis of paraffin-embedded human breast cancer with CD46 recombinant monoclonal antibody, clone 7D12 (Cat # RAB07545) on a Leica Bond™ system. After dewaxing and hydration, antigen retrieval was mediated by high pressure in a citrate buffer (pH 6.0). Section was blocked with 10% normal goat serum 30min at RT. Then primary antibody (1% BSA) was incubated at 4°C overnight. The primary is detected by a Goat anti-rabbit IgG polymer labeled by HRP and visualized using 0.05% DAB.

- Enzyme-linked Immunoabsorbent Assay

## Gene Info — CD46

Entrez GeneID [4179](#)

Protein Accession# [P15529](#)

Gene Name CD46

Gene Alias MCP, MGC26544, MIC10, TLX, TRA2.10

Gene Description CD46 molecule, complement regulatory protein

Omim ID [120920 235400](#)

Gene Ontology [Hyperlink](#)

**Gene Summary**

The protein encoded by this gene is a type I membrane protein and is a regulatory part of the complement system. The encoded protein has cofactor activity for inactivation of complement components C3b and C4b by serum factor I, which protects the host cell from damage by complement. In addition, the encoded protein can act as a receptor for the Edmonston strain of measles virus, human herpesvirus-6, and type IV pili of pathogenic Neisseria. Finally, the protein encoded by this gene may be involved in the fusion of the spermatozoa with the oocyte during fertilization. This gene is found in a cluster on chromosome 1q32 with other genes encoding structural components of the complement system. At least fourteen different transcript variants encoding fourteen different isoforms have been found for this gene. [provided by RefSeq]

**Other Designations**

CD46 antigen, complement regulatory protein|OTTHUMP00000034577|OTTHUMP00000034622|OTTHUMP00000034623|OTTHUMP00000034624|OTTHUMP00000034625|OTTHUMP00000034626|OTTHUMP00000034706|antigen identified by monoclonal antibody TRA-2-10|complement membrane cofactor

## Pathway

- [Complement and coagulation cascades](#)

## Disease

- [Abortion](#)
- [Birth Weight](#)
- [Genetic Predisposition to Disease](#)
- [Glioblastoma](#)
- [Glioma](#)
- [Hemolytic-Uremic Syndrome](#)
- [Leukemia](#)
- [Lymphoma](#)
- [Macular Degeneration](#)
- [Meningeal Neoplasms](#)
- [Meningioma](#)
- [Recurrence](#)