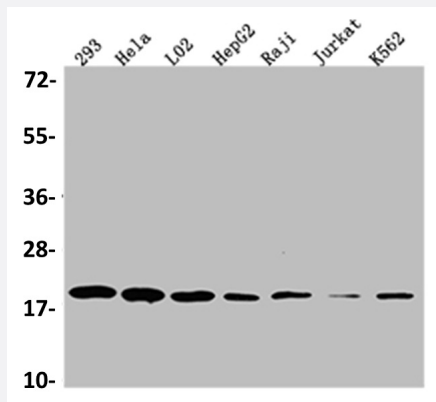


RecomAb™

TOMM22 recombinant monoclonal antibody, clone 7C11

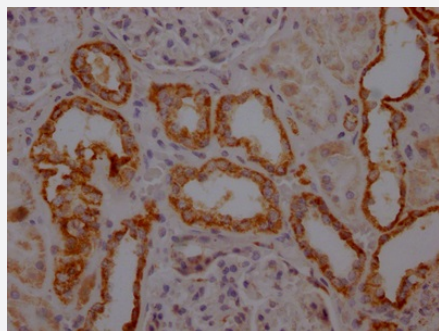
Catalog # RAB07544 Size 100 uL

Applications



Western Blot (Cell lysate)

Western blot analysis of 293 whole cell lysate, HeLa whole cell lysate, L02 whole cell lysate, HepF2 whole cell lysate, Raji whole cell lysate, Jurkat whole cell lysate, K562 whole cell lysate with TOMM22 recombinant monoclonal antibody, clone 7C11 (Cat # RAB07544).



Immunohistochemistry (Formalin/PFA-fixed paraffin-embedded sections)

Immunohistochemical analysis of paraffin-embedded human kidney tissue using TOMM22 recombinant monoclonal antibody, clone 7C11 (Cat # RAB07544) on a Leica Bond™ system. After dewaxing and hydration, antigen retrieval was mediated by high pressure in a citrate buffer (pH 6.0). Section was blocked with 10% normal goat serum 30min at RT. Then primary antibody (1% BSA) was incubated at 4°C overnight. The primary is detected by a Goat anti-rabbit IgG polymer labeled by HRP and visualized using 0.05% DAB.

Specification

Product Description	Rabbit recombinant monoclonal antibody raised against human TOMM22.
Antibody Species	Rabbit
Immunogen	Original antibody is raised against a synthetic peptide corresponding to human TOMM22.
Theoretical MW (kDa)	Calculated MW: 16

Reactivity	Human
Form	Liquid
Purification	Affinity chromatography purification
Isotype	IgG
Recommend Usage	ELISA Immunohistochemistry (1:50-1:200) Western Blot (1:500-1:5000) The optimal working dilution should be determined by the end user.
Storage Buffer	In PBS, pH7.4 (150 mM NaCl, 0.02% sodium azide and 50% glycerol)
Storage Instruction	Store at -20°C or -80°C. Aliquot to avoid repeated freezing and thawing.
Note	This product contains sodium azide: a POISONOUS AND HAZARDOUS SUBSTANCE which should be handled by trained staff only.

Applications

- Western Blot (Cell lysate)

Western blot analysis of 293 whole cell lysate, Hela whole cell lysate, L02 whole cell lysate, HepF2 whole cell lysate, Raji whole cell lysate, Jurkat whole cell lysate, K562 whole cell lysate with TOMM22 recombinant monoclonal antibody, clone 7C11 (Cat # RAB07544).

- Immunohistochemistry (Formalin/PFA-fixed paraffin-embedded sections)

Immunohistochemical analysis of paraffin-embedded human kidney tissue using TOMM22 recombinant monoclonal antibody, clone 7C11 (Cat # RAB07544) on a Leica BondTM system. After dewaxing and hydration, antigen retrieval was mediated by high pressure in a citrate buffer (pH 6.0). Section was blocked with 10% normal goat serum 30min at RT. Then primary antibody (1% BSA) was incubated at 4°C overnight. The primary is detected by a Goat anti-rabbit IgG polymer labeled by HRP and visualized using 0.05% DAB.

- Enzyme-linked Immunoabsorbent Assay

Gene Info — TOMM22

Entrez GeneID	56993
Protein Accession#	Q9NS69
Gene Name	TOMM22

Gene Alias	1C9-2, MST065, MSTP065, TOM22
Gene Description	translocase of outer mitochondrial membrane 22 homolog (yeast)
Omim ID	607046
Gene Ontology	Hyperlink
Gene Summary	The protein encoded by this gene is an integral membrane protein of the mitochondrial outer membrane. The encoded protein interacts with TOMM20 and TOMM40, and forms a complex with several other proteins to import cytosolic preproteins into the mitochondrion. [provided by RefSeq]
Other Designations	mitochondrial import receptor Tom22