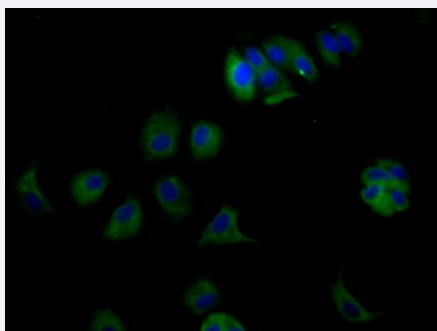


RecomAb™

# ERBB3 recombinant monoclonal antibody, clone 6F6

Catalog # RAB07539      Size 100 uL

## Applications



### Immunofluorescence

Immunofluorescent staining of MCF7 Cells with ERBB3 recombinant monoclonal antibody, clone 6F6 (Cat # RAB07539). The cells were fixed in 4% formaldehyde, permeated by 0.2% TritonX-100, and blocked in 10% normal Goat Serum. The cells were then incubated with the antibody overnight at 4°C. Nuclear DNA was labeled in blue with DAPI. The secondary antibody was FITC-conjugated AffiniPure Goat Anti-Rabbit IgG (H+L).

## Specification

Product Description	Rabbit recombinant monoclonal antibody raised against human ERBB3.
Antibody Species	Rabbit
Immunogen	Original antibody is raised against a synthetic peptide corresponding to human ERBB3.
Reactivity	Human
Form	Liquid
Purification	Affinity chromatography purification
Isotype	IgG
Recommend Usage	ELISA Immunofluorescence (1:20-1:200) The optimal working dilution should be determined by the end user.
Storage Buffer	In PBS, pH7.4 (150 mM NaCl, 0.02% sodium azide and 50% glycerol)
Storage Instruction	Store at -20°C or -80°C. Aliquot to avoid repeated freezing and thawing.

**Note**

This product contains sodium azide: a POISONOUS AND HAZARDOUS SUBSTANCE which should be handled by trained staff only.

## Applications

- Immunofluorescence

Immunofluorescent staining of MCF7 Cells with ERBB3 recombinant monoclonal antibody, clone 6F6 (Cat # RAB07539). The cells were fixed in 4% formaldehyde, permeated by 0.2% TritonX-100, and blocked in 10% normal Goat Serum. The cells were then incubated with the antibody overnight at 4°C. Nuclear DNA was labeled in blue with DAPI. The secondary antibody was FITC-conjugated AffiniPure Goat Anti-Rabbit IgG (H+L).

- Enzyme-linked Immunoabsorbent Assay

## Gene Info — ERBB3

**Entrez GeneID** [2065](#)

**Protein Accession#** [P21860](#)

**Gene Name** ERBB3

**Gene Alias** ErbB-3, HER3, LCCS2, MDA-BF-1, MGC88033, c-erbB-3, c-erbB3, erbB3-S, p180-ErbB3, p45-sErbB3, p85-sErbB3

**Gene Description** v-erb-b2 erythroblastic leukemia viral oncogene homolog 3 (avian)

**Omim ID** [190151](#) [607598](#)

**Gene Ontology** [Hyperlink](#)

**Gene Summary** This gene encodes a member of the epidermal growth factor receptor (EGFR) family of receptor tyrosine kinases. This membrane-bound protein has a neuregulin binding domain but not an active kinase domain. It therefore can bind this ligand but not convey the signal into the cell through protein phosphorylation. However, it does form heterodimers with other EGF receptor family members which do have kinase activity. Heterodimerization leads to the activation of pathways which lead to cell proliferation or differentiation. Amplification of this gene and/or overexpression of its protein have been reported in numerous cancers, including prostate, bladder, and breast tumors. Alternative transcriptional splice variants encoding different isoforms have been characterized. One isoform lacks the intermembrane region and is secreted outside the cell. This form acts to modulate the activity of the membrane-bound form. Additional splice variants have also been reported, but they have not been thoroughly characterized. [provided by RefSeq]

**Other Designations** erbB-3|lethal congenital contracture syndrome 2|v-erb-b2 avian erythroblastic leukemia viral oncogene homolog 3

## Pathway

- [Calcium signaling pathway](#)
- [Endocytosis](#)
- [ErbB signaling pathway](#)

## Disease

- [Addison Disease](#)
- [Arthritis](#)
- [Autoimmune Diseases](#)
- [Bipolar Disorder](#)
- [Brain Neoplasms](#)
- [Carcinoma](#)
- [Cardiovascular Diseases](#)
- [Celiac Disease](#)
- [Coronary Artery Disease](#)
- [Crohn Disease](#)
- [Diabetes Mellitus](#)
- [Edema](#)
- [Genetic Predisposition to Disease](#)
- [Glioma](#)
- [Hypertension](#)
- [Multiple Sclerosis](#)
- [Ovarian Neoplasms](#)
- [Prostatic Neoplasms](#)
- [Schizophrenia](#)
- [Thyroid Diseases](#)