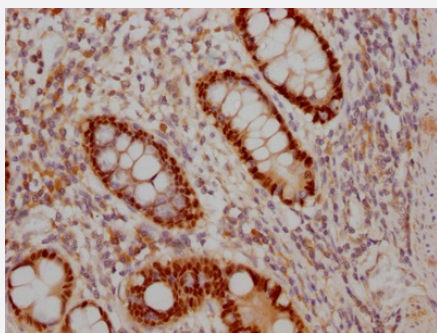


RecomAb™

SOX9 recombinant monoclonal antibody, clone 5H12

Catalog # RAB07533 Size 100 uL

Applications



Immunohistochemistry (Formalin/PFA-fixed paraffin-embedded sections)

Immunohistochemical analysis of paraffin-embedded human colon cancer using SOX9 recombinant monoclonal antibody, clone 5H12 (Cat # RAB07533) on a Leica Bond™ system. After dewaxing and hydration, antigen retrieval was mediated by high pressure in a citrate buffer (pH 6.0). Section was blocked with 10% normal goat serum 30min at RT. Then primary antibody (1% BSA) was incubated at 4°C overnight. The primary is detected by a Goat anti-rabbit IgG polymer labeled by HRP and visualized using 0.05% DAB.

Specification

Product Description	Rabbit recombinant monoclonal antibody raised against human SOX9.
Antibody Species	Rabbit
Immunogen	Original antibody is raised against a synthetic peptide corresponding to human SOX9.
Reactivity	Human
Form	Liquid
Purification	Affinity chromatography purification
Isotype	IgG
Recommend Usage	ELISA Immunohistochemistry (1:50-1:200) The optimal working dilution should be determined by the end user.
Storage Buffer	In PBS, pH7.4 (150 mM NaCl, 0.02% sodium azide and 50% glycerol)

Storage Instruction

Store at -20°C or -80°C.
Aliquot to avoid repeated freezing and thawing.

Note

This product contains sodium azide: a POISONOUS AND HAZARDOUS SUBSTANCE which should be handled by trained staff only.

Applications

- Immunohistochemistry (Formalin/PFA-fixed paraffin-embedded sections)

Immunohistochemical analysis of paraffin-embedded human colon cancer using SOX9 recombinant monoclonal antibody, clone 5H12 (Cat # RAB07533) on a Leica Bond™ system. After dewaxing and hydration, antigen retrieval was mediated by high pressure in a citrate buffer (pH 6.0). Section was blocked with 10% normal goat serum 30min at RT. Then primary antibody (1% BSA) was incubated at 4°C overnight. The primary is detected by a Goat anti-rabbit IgG polymer labeled by HRP and visualized using 0.05% DAB.

- Enzyme-linked Immunoabsorbent Assay

Gene Info — SOX9

Entrez GeneID[6662](#)**Protein Accession#**[P48436](#)**Gene Name**

SOX9

Gene Alias

CMD1, CMPD1, SRA1

Gene Description

SRY (sex determining region Y)-box 9

Omim ID[114290 608160](#)**Gene Ontology**[Hyperlink](#)**Gene Summary**

The protein encoded by this gene recognizes the sequence CCTTGAG along with other members of the HMG-box class DNA-binding proteins. It acts during chondrocyte differentiation and, with steroidogenic factor 1, regulates transcription of the anti-Muellerian hormone (AMH) gene. Deficiencies lead to the skeletal malformation syndrome campomelic dysplasia, frequently with sex reversal. [provided by RefSeq]

Other Designations

SRY (sex determining region Y)-box 9 (campomelic dysplasia, autosomal sex-reversal)|SRY (sex-determining region Y)-box 9 (campomelic dysplasia, autosomal sex-reversal)|SRY (sex-determining region Y)-box 9 protein|campomelic dysplasia, autosomal sex-reversal

Disease

- [Cleft Lip](#)
- [Cleft Palate](#)
- [Genetic Predisposition to Disease](#)
- [Hypospadias](#)
- [Ovarian Neoplasms](#)
- [Sex determination](#)