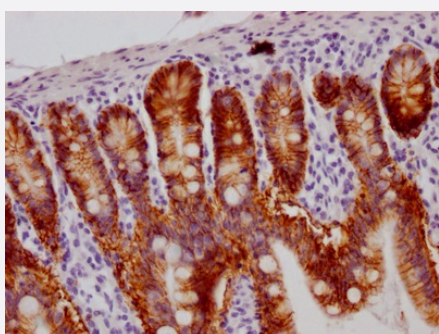


RecomAb™

GPA33 recombinant monoclonal antibody, clone 4H4

Catalog # RAB07525 Size 100 uL

Applications



Immunohistochemistry (Formalin/PFA-fixed paraffin-embedded sections)

Immunohistochemical analysis of paraffin-embedded human small intestine tissue using GPA33 recombinant monoclonal antibody, clone 4H4 (Cat # RAB07525) on a Leica Bond™ system. After dewaxing and hydration, antigen retrieval was mediated by high pressure in a citrate buffer (pH 6.0). Section was blocked with 10% normal goat serum 30min at RT. Then primary antibody (1% BSA) was incubated at 4°C overnight. The primary is detected by a Goat anti-rabbit IgG polymer labeled by HRP and visualized using 0.05% DAB.

Specification

| | |
|---------------------|--|
| Product Description | Rabbit recombinant monoclonal antibody raised against human GPA33. |
| Antibody Species | Rabbit |
| Immunogen | Original antibody is raised against a synthetic peptide corresponding to human GPA33. |
| Reactivity | Human |
| Form | Liquid |
| Purification | Affinity chromatography purification |
| Isotype | IgG |
| Recommend Usage | ELISA Immunohistochemistry (1:50-1:200) The optimal working dilution should be determined by the end user. |
| Storage Buffer | In PBS, pH7.4 (150 mM NaCl, 0.02% sodium azide and 50% glycerol) |

Storage Instruction

Store at -20°C or -80°C.
Aliquot to avoid repeated freezing and thawing.

Note

This product contains sodium azide: a POISONOUS AND HAZARDOUS SUBSTANCE which should be handled by trained staff only.

Applications

- Immunohistochemistry (Formalin/PFA-fixed paraffin-embedded sections)

Immunohistochemical analysis of paraffin-embedded human small intestine tissue using GPA33 recombinant monoclonal antibody, clone 4H4 (Cat # RAB07525) on a Leica BondTM system. After dewaxing and hydration, antigen retrieval was mediated by high pressure in a citrate buffer (pH 6.0). Section was blocked with 10% normal goat serum 30min at RT. Then primary antibody (1% BSA) was incubated at 4°C overnight. The primary is detected by a Goat anti-rabbit IgG polymer labeled by HRP and visualized using 0.05% DAB.

- Enzyme-linked Immunoabsorbent Assay

Gene Info — GPA33

Entrez GeneID [10223](#)

Protein Accession# [Q99795](#)

Gene Name GPA33

Gene Alias A33, MGC129986, MGC129987

Gene Description glycoprotein A33 (transmembrane)

Omim ID [602171](#)

Gene Ontology [Hyperlink](#)

Gene Summary The glycoprotein encoded by this gene is a cell surface antigen that is expressed in greater than 95% of human colon cancers. The open reading frame encodes a 319-amino acid polypeptide having a putative secretory signal sequence and 3 potential glycosylation sites. The predicted mature protein has a 213-amino acid extracellular region, a single transmembrane domain, and a 62-amino acid intracellular tail. The sequence of the extracellular region contains 2 domains characteristic of the CD2 subgroup of the immunoglobulin (Ig) superfamily. [provided by RefSeq]

Other Designations OTTHUMP00000032346|transmembrane glycoprotein A33

Disease

- [Genetic Predisposition to Disease](#)
- [Hypertension](#)
- [Osteoporosis](#)
- [Tobacco Use Disorder](#)