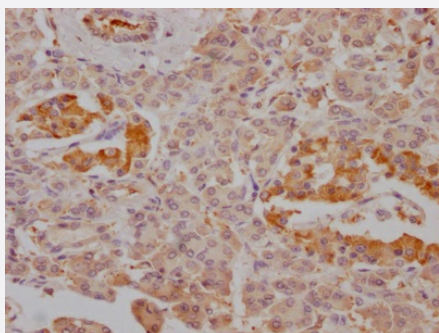


RecomAb™

FBP1 recombinant monoclonal antibody, clone 4G3

Catalog # RAB07524 Size 100 uL

Applications



Immunohistochemistry (Formalin/PFA-fixed paraffin-embedded sections)

Immunohistochemical analysis of paraffin-embedded human pancreatic cancer using FBP1 recombinant monoclonal antibody, clone 4G3 (Cat # RAB07524) on a Leica Bond™ system. After dewaxing and hydration, antigen retrieval was mediated by high pressure in a citrate buffer (pH 6.0). Section was blocked with 10% normal goat serum 30min at RT. Then primary antibody (1% BSA) was incubated at 4°C overnight. The primary is detected by a Goat anti-rabbit IgG polymer labeled by HRP and visualized using 0.05% DAB.

Specification

Product Description	Rabbit recombinant monoclonal antibody raised against human FBP1.
Antibody Species	Rabbit
Immunogen	Original antibody is raised against a synthetic peptide corresponding to human FBP1.
Reactivity	Human
Form	Liquid
Purification	Affinity chromatography purification
Isotype	IgG
Recommend Usage	ELISA Immunohistochemistry (1:50-1:200) The optimal working dilution should be determined by the end user.
Storage Buffer	In PBS, pH7.4 (150 mM NaCl, 0.02% sodium azide and 50% glycerol)

Storage Instruction

Store at -20°C or -80°C.
Aliquot to avoid repeated freezing and thawing.

Note

This product contains sodium azide: a POISONOUS AND HAZARDOUS SUBSTANCE which should be handled by trained staff only.

Applications

- Immunohistochemistry (Formalin/PFA-fixed paraffin-embedded sections)

Immunohistochemical analysis of paraffin-embedded human pancreatic cancer using FBP1 recombinant monoclonal antibody, clone 4G3 (Cat # RAB07524) on a Leica BondTM system. After dewaxing and hydration, antigen retrieval was mediated by high pressure in a citrate buffer (pH 6.0). Section was blocked with 10% normal goat serum 30min at RT. Then primary antibody (1% BSA) was incubated at 4°C overnight. The primary is detected by a Goat anti-rabbit IgG polymer labeled by HRP and visualized using 0.05% DAB.

- Enzyme-linked Immunoabsorbent Assay

Gene Info — FBP1

Entrez GeneID[2203](#)**Protein Accession#**[P09467](#)**Gene Name**

FBP1

Gene Alias

FBP

Gene Description

fructose-1,6-bisphosphatase 1

Omim ID[229700 611570](#)**Gene Ontology**[Hyperlink](#)**Gene Summary**

Fructose-1,6-bisphosphatase 1, a gluconeogenesis regulatory enzyme, catalyzes the hydrolysis of fructose 1,6-bisphosphate to fructose 6-phosphate and inorganic phosphate. Fructose-1,6-bisphosphatase deficiency is associated with hypoglycemia and metabolic acidosis. [provided by RefSeq]

Other Designations

OTTHUMP00000021694|fructose-bisphosphatase 1|growth-inhibiting protein 17

Pathway

- [Biosynthesis of phenylpropanoids](#)

- [Carbon fixation in photosynthetic organisms](#)
- [Fructose and mannose metabolism](#)
- [Glycolysis / Gluconeogenesis](#)
- [Insulin signaling pathway](#)
- [Metabolic pathways](#)
- [Pentose phosphate pathway](#)

Disease

- [Cleft Lip](#)
- [Cleft Palate](#)
- [Genetic Predisposition to Disease](#)
- [Schizophrenia](#)
- [Tooth Abnormalities](#)