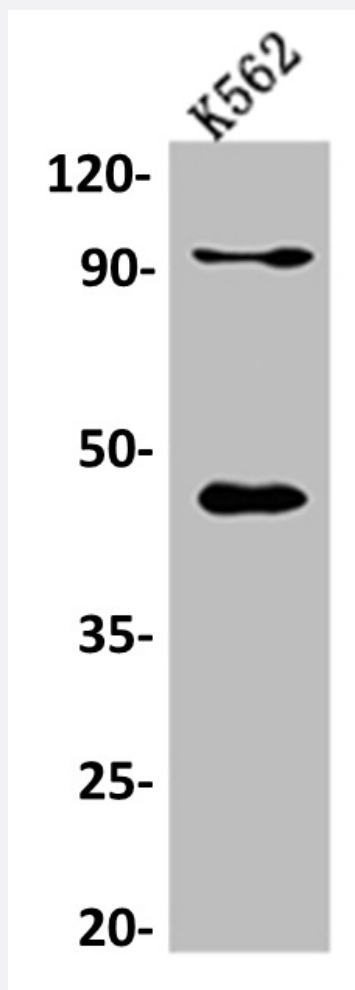


RecomAb™

PCYT1A recombinant monoclonal antibody, clone 4F2

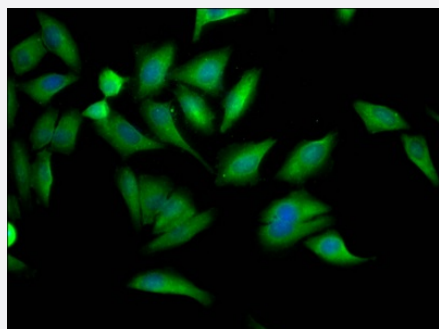
Catalog # RAB07523 Size 100 uL

Applications



Western Blot (Cell lysate)

Western blot analysis of K562 whole cell lysate with PCYT1A recombinant monoclonal antibody, clone 4F2 (Cat # RAB07523).



Immunofluorescence

Immunofluorescent staining of HeLa Cells with PCYT1A recombinant monoclonal antibody, clone 4F2 (Cat # RAB07523). The cells were fixed in 4% formaldehyde, permeated by 0.2% TritonX-100, and blocked in 10% normal Goat Serum. The cells were then incubated with the antibody overnight at 4°C. Nuclear DNA was labeled in blue with DAPI. The secondary antibody was FITC-conjugated AffiniPure Goat Anti-Rabbit IgG (H+L).

Specification

Product Description	Rabbit recombinant monoclonal antibody raised against human PCYT1A.
Antibody Species	Rabbit
Immunogen	Original antibody is raised against a synthetic peptide corresponding to human PCYT1A.
Theoretical MW (kDa)	42
Reactivity	Human
Form	Liquid
Purification	Affinity chromatography purification
Isotype	IgG
Recommend Usage	ELISA Immunofluorescence (1:20-1:200) Western Blot (1:500-1:5000) The optimal working dilution should be determined by the end user.
Storage Buffer	In PBS, pH7.4 (150 mM NaCl, 0.02% sodium azide and 50% glycerol)
Storage Instruction	Store at -20°C or -80°C. Aliquot to avoid repeated freezing and thawing.
Note	This product contains sodium azide: a POISONOUS AND HAZARDOUS SUBSTANCE which should be handled by trained staff only.

Applications

- Western Blot (Cell lysate)

Western blot analysis of K562 whole cell lysate with PCYT1A recombinant monoclonal antibody, clone 4F2 (Cat # RAB07523).

- Immunofluorescence

Immunofluorescent staining of HeLa Cells with PCYT1A recombinant monoclonal antibody, clone 4F2 (Cat # RAB07523). The cells were fixed in 4% formaldehyde, permeated by 0.2% TritonX-100, and blocked in 10% normal Goat Serum. The cells were then incubated with the antibody overnight at 4°C. Nuclear DNA was labeled in blue with DAPI. The secondary antibody was FITC-conjugated AffiniPure Goat Anti-Rabbit IgG (H+L).

- Enzyme-linked Immunoabsorbent Assay

Gene Info — PCYT1A

Entrez GeneID	5130
Protein Accession#	P49585
Gene Name	PCYT1A
Gene Alias	CT, CTPCT, PCYT1
Gene Description	phosphate cytidyltransferase 1, choline, alpha
Omim ID	123695
Gene Ontology	Hyperlink
Gene Summary	choline
Other Designations	phosphate cytidyltransferase 1, choline, alpha isoform

Pathway

- [Aminophosphonate metabolism](#)
- [Glycerophospholipid metabolism](#)
- [Metabolic pathways](#)

Disease

- [Cleft Lip](#)
- [Cleft Palate](#)
- [Genetic Predisposition to Disease](#)
- [Neural Tube Defects](#)
- [Spinal Dysraphism](#)