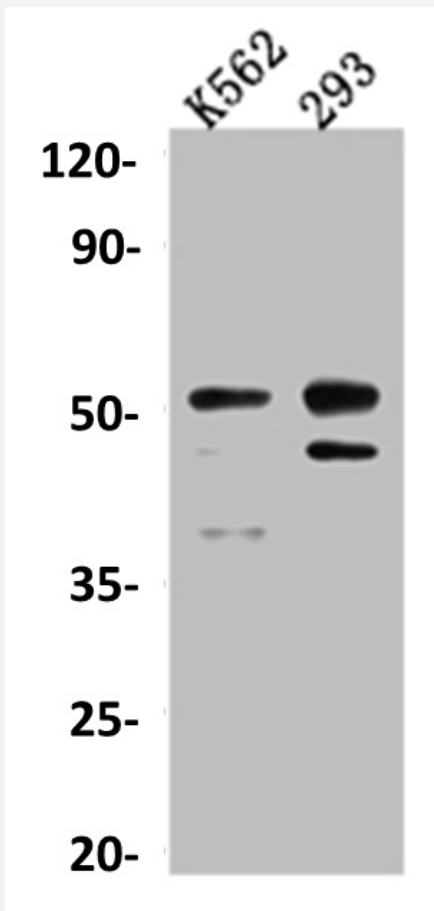


RecomAb™

CASP2 recombinant monoclonal antibody, clone 3D4

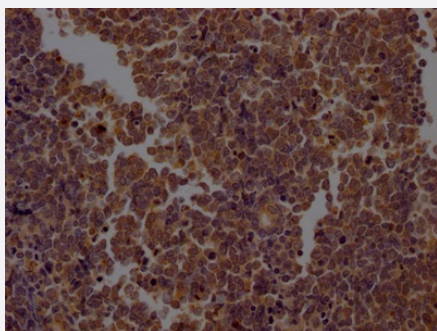
Catalog # RAB07513 Size 100 uL

Applications



Western Blot (Cell lysate)

Western blot analysis of K562 whole cell lysate, 293 whole cell lysate with CASP2 recombinant monoclonal antibody, clone 3D4 (Cat # RAB07513).



Immunohistochemistry (Formalin/PFA-fixed paraffin-embedded sections)

Immunohistochemical analysis of paraffin-embedded human lung cancer using CASP2 recombinant monoclonal antibody, clone 3D4 (Cat # RAB07513) on a Leica Bond™ system. After dewaxing and hydration, antigen retrieval was mediated by high pressure in a citrate buffer (pH 6.0). Section was blocked with 10% normal goat serum 30min at RT. Then primary antibody (1% BSA) was incubated at 4°C overnight. The primary is detected by a Goat anti-rabbit IgG polymer labeled by HRP and visualized using 0.05% DAB.

Specification

Product Description	Rabbit recombinant monoclonal antibody raised against human CASP2.
Antibody Species	Rabbit
Immunogen	Original antibody is raised against a synthetic peptide corresponding to human CASP2.
Theoretical MW (kDa)	Calculated MW: 51, 3
Reactivity	Human
Form	Liquid
Purification	Affinity chromatography purification
Isotype	IgG
Recommend Usage	ELISA Immunohistochemistry (1:50-1:200) Western Blot (1:500-1:5000) The optimal working dilution should be determined by the end user.
Storage Buffer	In PBS, pH7.4 (150 mM NaCl, 0.02% sodium azide and 50% glycerol)
Storage Instruction	Store at -20°C or -80°C. Aliquot to avoid repeated freezing and thawing.
Note	This product contains sodium azide: a POISONOUS AND HAZARDOUS SUBSTANCE which should be handled by trained staff only.

Applications

- Western Blot (Cell lysate)

Western blot analysis of K562 whole cell lysate, 293 whole cell lysate with CASP2 recombinant monoclonal antibody, clone 3D4 (Cat # RAB07513).

- Immunohistochemistry (Formalin/PFA-fixed paraffin-embedded sections)

Immunohistochemical analysis of paraffin-embedded human lung cancer using CASP2 recombinant monoclonal antibody, clone 3D4 (Cat # RAB07513) on a Leica BondTM system. After dewaxing and hydration, antigen retrieval was mediated by high pressure in a citrate buffer (pH 6.0). Section was blocked with 10% normal goat serum 30min at RT. Then primary antibody (1% BSA) was incubated at 4°C overnight. The primary is detected by a Goat anti-rabbit IgG polymer labeled by HRP and visualized using 0.05% DAB.

- Enzyme-linked Immunoabsorbent Assay

Gene Info — CASP2

Entrez GeneID	835
Protein Accession#	P42575
Gene Name	CASP2
Gene Alias	CASP-2, ICH-1L, ICH-1L/1S, ICH1, NEDD2
Gene Description	caspase 2, apoptosis-related cysteine peptidase
Omim ID	600639
Gene Ontology	Hyperlink
Gene Summary	This gene encodes a protein which is a member of the cysteine-aspartic acid protease (caspase) family. Sequential activation of caspases plays a central role in the execution-phase of cell apoptosis. Caspases exist as inactive proenzymes which undergo proteolytic processing at conserved aspartic residues to produce two subunits, large and small, that dimerize to form the active enzyme. The proteolytic cleavage of this protein is induced by a variety of apoptotic stimuli. Alternative splicing of this gene results in multiple transcript variants that encode different isoforms. [provided by RefSeq]
Other Designations	ICH-1 protease NEDD2 apoptosis regulatory caspase 2 neural precursor cell expressed, developmentally down-regulated 2

Disease

- [Adenocarcinoma](#)
- [Esophageal Neoplasms](#)
- [Gastrointestinal Stromal Tumors](#)
- [Genetic Predisposition to Disease](#)
- [Head and Neck Neoplasms](#)
- [Hematologic Diseases](#)
- [Hodgkin Disease](#)
- [Lymphoma](#)

- [Lymphoproliferative Disorders](#)
- [Multiple Sclerosis](#)
- [Neoplasm Recurrence](#)
- [Neoplasms](#)
- [Occupational Diseases](#)
- [Prostatic Neoplasms](#)
- [Waldenstrom Macroglobulinemia](#)
- [Werner syndrome](#)