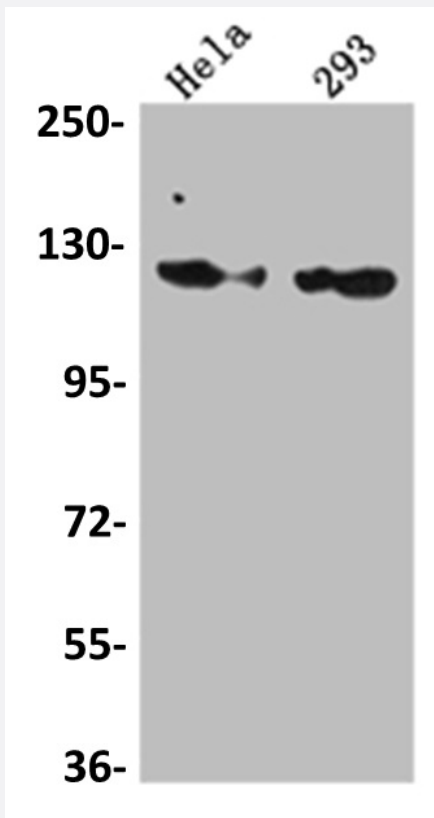


RecomAb™

## RNF20 recombinant monoclonal antibody, clone 2H12

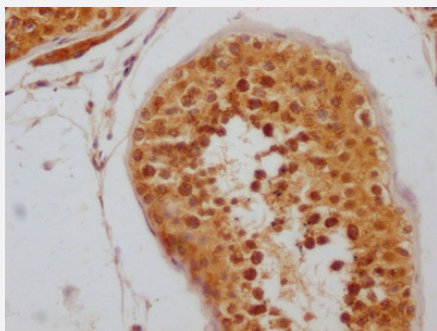
Catalog # RAB07509      Size 100 uL

### Applications



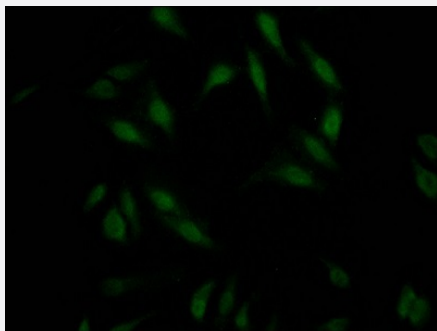
#### Western Blot (Cell lysate)

Western blot analysis of HeLa whole cell lysate, 293 whole cell lysate with RNF20 recombinant monoclonal antibody, clone 2H12 (Cat # RAB07509).



#### Immunohistochemistry (Formalin/PFA-fixed paraffin-embedded sections)

Immunohistochemical analysis of paraffin-embedded human testis tissue using RNF20 recombinant monoclonal antibody, clone 2H12 (Cat # RAB07509) on a Leica Bond™ system. After dewaxing and hydration, antigen retrieval was mediated by high pressure in a citrate buffer (pH 6.0). Section was blocked with 10% normal goat serum 30min at RT. Then primary antibody (1% BSA) was incubated at 4°C overnight. The primary is detected by a Goat anti-rabbit IgG polymer labeled by HRP and visualized using 0.05% DAB.



## Immunofluorescence

Immunofluorescent staining of Hela Cells with RNF20 recombinant monoclonal antibody, clone 2H12 (Cat # RAB07509). The cells were fixed in 4% formaldehyde, permeated by 0.2% TritonX-100, and blocked in 10% normal Goat Serum. The cells were then incubated with the antibody overnight at 4°C. Nuclear DNA was labeled in blue with DAPI. The secondary antibody was FITC-conjugated AffiniPure Goat Anti-Rabbit IgG (H+L).

## Specification

<b>Product Description</b>	Rabbit recombinant monoclonal antibody raised against human RNF20.
<b>Antibody Species</b>	Rabbit
<b>Immunogen</b>	Original antibody is raised against a synthetic peptide corresponding to human RNF20.
<b>Theoretical MW (kDa)</b>	114
<b>Reactivity</b>	Human
<b>Form</b>	Liquid
<b>Purification</b>	Affinity chromatography purification
<b>Isotype</b>	IgG
<b>Recommend Usage</b>	ELISA Immunofluorescence (1:20-1:200) Immunohistochemistry (1:50-1:200) Western Blot (1:500-1:5000) The optimal working dilution should be determined by the end user.
<b>Storage Buffer</b>	In PBS, pH7.4 (150 mM NaCl, 0.02% sodium azide and 50% glycerol)
<b>Storage Instruction</b>	Store at -20°C or -80°C. Aliquot to avoid repeated freezing and thawing.
<b>Note</b>	This product contains sodium azide: a POISONOUS AND HAZARDOUS SUBSTANCE which should be handled by trained staff only.

## Applications

- Western Blot (Cell lysate)

Western blot analysis of Hela whole cell lysate, 293 whole cell lysate with RNF20 recombinant monoclonal antibody, clone 2H12 (Cat # RAB07509).

- Immunohistochemistry (Formalin/PFA-fixed paraffin-embedded sections)

Immunohistochemical analysis of paraffin-embedded human testis tissue using RNF20 recombinant monoclonal antibody, clone 2H12 (Cat # RAB07509) on a Leica Bond<sup>TM</sup> system. After dewaxing and hydration, antigen retrieval was mediated by high pressure in a citrate buffer (pH 6.0). Section was blocked with 10% normal goat serum 30min at RT. Then primary antibody (1% BSA) was incubated at 4°C overnight. The primary is detected by a Goat anti-rabbit IgG polymer labeled by HRP and visualized using 0.05% DAB.

- Immunofluorescence

Immunofluorescent staining of Hela Cells with RNF20 recombinant monoclonal antibody, clone 2H12 (Cat # RAB07509). The cells were fixed in 4% formaldehyde, permeated by 0.2% TritonX-100, and blocked in 10% normal Goat Serum. The cells were then incubated with the antibody overnight at 4°C. Nuclear DNA was labeled in blue with DAPI. The secondary antibody was FITC-conjugated AffiniPure Goat Anti-Rabbit IgG (H+L).

- Enzyme-linked Immunoabsorbent Assay

## Gene Info — RNF20

Entrez GeneID [56254](#)

Protein Accession# [Q5VTR2](#)

Gene Name RNF20

Gene Alias BRE1, BRE1A, FLJ11189, FLJ20382, KIAA2779, MGC129667, MGC129668, hBRE1

Gene Description ring finger protein 20

Omim ID [607699](#)

Gene Ontology [Hyperlink](#)

**Gene Summary** The protein encoded by this gene shares similarity with BRE1 of *S. cerevisiae*. Yeast BRE1 is a ubiquitin ligase required for the ubiquitination of histone H2B and the methylation of histone H3. [provided by RefSeq]

**Other Designations** BRE1 E3 ubiquitin ligase homolog|homolog of *S. cerevisiae* BRE1