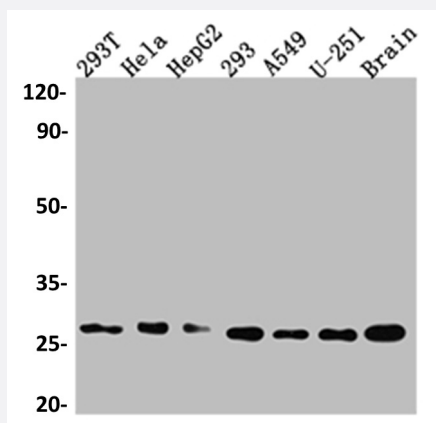


RecomAb™

ID1 recombinant monoclonal antibody, clone 2C7

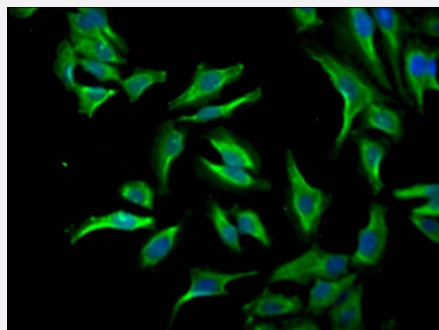
Catalog # RAB07504 Size 100 uL

Applications



Western Blot

Western blot analysis of 293T whole cell lysate, HeLa whole cell lysate, HepG2 whole cell lysate, 293 whole cell lysate, A549 whole cell lysate, U-251 whole cell lysate, Mouse Brain whole cell lysate with ID1 recombinant monoclonal antibody, clone 2C7 (Cat # RAB07504).



Immunofluorescence

Immunofluorescent staining of HeLa Cells with ID1 recombinant monoclonal antibody, clone 2C7 (Cat # RAB07504). The cells were fixed in 4% formaldehyde, permeated by 0.2% TritonX-100, and blocked in 10% normal Goat Serum. The cells were then incubated with the antibody overnight at 4°C. Nuclear DNA was labeled in blue with DAPI. The secondary antibody was FITC-conjugated AffiniPure Goat Anti-Rabbit IgG (H+L).

Specification

Product Description	Rabbit recombinant monoclonal antibody raised against human ID1.
Antibody Species	Rabbit
Immunogen	Original antibody is raised against a synthetic peptide corresponding to human ID1.
Theoretical MW (kDa)	Calculated MW: 17, 1
Reactivity	Human, Mouse

Form	Liquid
Purification	Affinity chromatography purification
Isotype	IgG
Recommend Usage	ELISA Immunofluorescence (1:20-1:200) Western Blot (1:500-1:5000) The optimal working dilution should be determined by the end user.
Storage Buffer	In PBS, pH7.4 (150 mM NaCl, 0.02% sodium azide and 50% glycerol)
Storage Instruction	Store at -20°C or -80°C. Aliquot to avoid repeated freezing and thawing.
Note	This product contains sodium azide: a POISONOUS AND HAZARDOUS SUBSTANCE which should be handled by trained staff only.

Applications

- Western Blot

Western blot analysis of 293T whole cell lysate, Hela whole cell lysate, HepG2 whole cell lysate 293 whole cell lysate, A549 whole cell lysate, U-251 whole cell lysate, Mouse Brain whole cell lysate with ID1 recombinant monoclonal antibody, clone 2C7 (Cat # RAB07504).

- Immunofluorescence

Immunofluorescent staining of Hela Cells with ID1 recombinant monoclonal antibody, clone 2C7 (Cat # RAB07504). The cells were fixed in 4% formaldehyde, permeated by 0.2% TritonX-100, and blocked in 10% normal Goat Serum. The cells were then incubated with the antibody overnight at 4°C. Nuclear DNA was labeled in blue with DAPI. The secondary antibody was FITC-conjugated AffiniPure Goat Anti-Rabbit IgG (H+L).

- Enzyme-linked Immunoabsorbent Assay

Gene Info — ID1

Entrez GeneID	3397
Protein Accession#	P41134
Gene Name	ID1
Gene Alias	ID, bHLHb24
Gene Description	inhibitor of DNA binding 1, dominant negative helix-loop-helix protein

Omim ID [600349](#)

Gene Ontology [Hyperlink](#)

Gene Summary The protein encoded by this gene is a helix-loop-helix (HLH) protein that can form heterodimers with members of the basic HLH family of transcription factors. The encoded protein has no DNA binding activity and therefore can inhibit the DNA binding and transcriptional activation ability of basic HLH proteins with which it interacts. This protein may play a role in cell growth, senescence, and differentiation. Two transcript variants encoding different isoforms have been found for this gene. [provided by RefSeq]

Other Designations DNA-binding protein inhibitor ID-1|OTTHUMP00000030534|OTTHUMP00000030535|dJ857M17.1.2 (inhibitor of DNA binding 1, dominant negative helix-loop-helix protein)|inhibitor of DNA binding 1|inhibitor of differentiation 1

Pathway

- [TGF-beta signaling pathway](#)