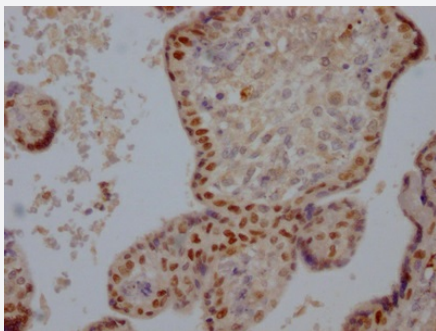


RecomAb™

# DNMT1 recombinant monoclonal antibody, clone 1A9

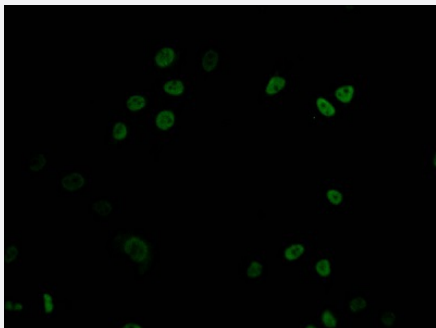
Catalog # RAB07494      Size 100 uL

## Applications



### Immunohistochemistry (Formalin/PFA-fixed paraffin-embedded sections)

Immunohistochemical analysis of paraffin-embedded human placenta tissue using DNMT1 recombinant monoclonal antibody, clone 1A9 (Cat # RAB07494) on a Leica Bond™ system. After dewaxing and hydration, antigen retrieval was mediated by high pressure in a citrate buffer (pH 6.0). Section was blocked with 10% normal goat serum 30min at RT. Then primary antibody (1% BSA) was incubated at 4°C overnight. The primary is detected by a Goat anti-rabbit IgG polymer labeled by HRP and visualized using 0.05% DAB.



### Immunofluorescence

Immunofluorescent staining of HepG2 Cells with DNMT1 recombinant monoclonal antibody, clone 1A9 (Cat # RAB07494). The cells were fixed in 4% formaldehyde, permeated by 0.2% TritonX-100, and blocked in 10% normal Goat Serum. The cells were then incubated with the antibody overnight at 4°C. Nuclear DNA was labeled in blue with DAPI. The secondary antibody was FITC-conjugated AffiniPure Goat Anti-Rabbit IgG (H+L).

## Specification

Product Description	Rabbit recombinant monoclonal antibody raised against human DNMT1.
Antibody Species	Rabbit
Immunogen	Original antibody is raised against a synthetic peptide corresponding to human DNMT1.
Reactivity	Human
Form	Liquid

<b>Purification</b>	Affinity chromatography purification
<b>Isotype</b>	IgG
<b>Recommend Usage</b>	ELISA Immunofluorescence (1:20-1:200) Immunohistochemistry (1:50-1:200) The optimal working dilution should be determined by the end user.
<b>Storage Buffer</b>	In PBS, pH7.4 (150 mM NaCl, 0.02% sodium azide and 50% glycerol)
<b>Storage Instruction</b>	Store at -20°C or -80°C. Aliquot to avoid repeated freezing and thawing.
<b>Note</b>	This product contains sodium azide: a POISONOUS AND HAZARDOUS SUBSTANCE which should be handled by trained staff only.

## Applications

- Immunohistochemistry (Formalin/PFA-fixed paraffin-embedded sections)

Immunohistochemical analysis of paraffin-embedded human placenta tissue using DNMT1 recombinant monoclonal antibody, clone 1A9 (Cat # RAB07494) on a Leica Bond<sup>TM</sup> system. After dewaxing and hydration, antigen retrieval was mediated by high pressure in a citrate buffer (pH 6.0). Section was blocked with 10% normal goat serum 30min at RT. Then primary antibody (1% BSA) was incubated at 4°C overnight. The primary is detected by a Goat anti-rabbit IgG polymer labeled by HRP and visualized using 0.05% DAB.

- Immunofluorescence

Immunofluorescent staining of HepG2 Cells with DNMT1 recombinant monoclonal antibody, clone 1A9 (Cat # RAB07494). The cells were fixed in 4% formaldehyde, permeated by 0.2% TritonX-100, and blocked in 10% normal Goat Serum. The cells were then incubated with the antibody overnight at 4°C. Nuclear DNA was labeled in blue with DAPI. The secondary antibody was FITC-conjugated AffiniPure Goat Anti-Rabbit IgG (H+L).

- Enzyme-linked Immunoabsorbent Assay

## Gene Info — DNMT1

<b>Entrez GeneID</b>	<a href="#">1786</a>
<b>Protein Accession#</b>	<a href="#">P26358</a>
<b>Gene Name</b>	DNMT1
<b>Gene Alias</b>	AIM, CXXC9, DNMT, FLJ16293, MCMT, MGC104992
<b>Gene Description</b>	DNA (cytosine-5-)-methyltransferase 1

Omim ID [126375](#)

Gene Ontology [Hyperlink](#)

**Gene Summary** DNA (cytosine-5-)-methyltransferase 1 has a role in the establishment and regulation of tissue-specific patterns of methylated cytosine residues. Aberrant methylation patterns are associated with certain human tumors and developmental abnormalities. Two transcript variants encoding different isoforms have been found for this gene. [provided by RefSeq]

**Other Designations** CXXC finger protein 9|DNA methyltransferase 1

## Pathway

- [Cysteine and methionine metabolism](#)
- [Metabolic pathways](#)

## Disease

- [Arsenic Poisoning](#)
- [Breast cancer](#)
- [Breast Neoplasms](#)
- [Carcinoma](#)
- [Colorectal Neoplasms](#)
- [Cues](#)
- [DNA Damage](#)
- [Genetic Predisposition to Disease](#)
- [Lupus Erythematosus](#)
- [Neoplasms](#)
- [Ovarian cancer](#)
- [Ovarian Neoplasms](#)
- [Satiety Response](#)
- [Spinal Dysraphism](#)

- [Stomach Neoplasms](#)