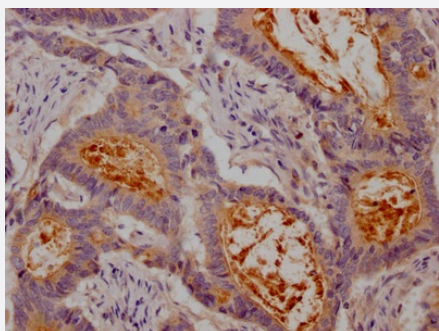


RecomAb™

# CEACAM1 recombinant monoclonal antibody, clone 10H8

Catalog # RAB07493      Size 100 uL

## Applications



### Immunohistochemistry (Formalin/PFA-fixed paraffin-embedded sections)

Immunohistochemical analysis of paraffin-embedded human colon cancer using CEACAM1 recombinant monoclonal antibody, clone 10H8 (Cat # RAB07493) on a Leica Bond™ system. After dewaxing and hydration, antigen retrieval was mediated by high pressure in a citrate buffer (pH 6.0). Section was blocked with 10% normal goat serum 30min at RT. Then primary antibody (1% BSA) was incubated at 4°C overnight. The primary is detected by a Goat anti-rabbit IgG polymer labeled by HRP and visualized using 0.05% DAB.

## Specification

<b>Product Description</b>	Rabbit recombinant monoclonal antibody raised against human CEACAM1.
<b>Antibody Species</b>	Rabbit
<b>Immunogen</b>	Original antibody is raised against a synthetic peptide corresponding to human CEACAM1.
<b>Reactivity</b>	Human
<b>Form</b>	Liquid
<b>Purification</b>	Affinity chromatography purification
<b>Isotype</b>	IgG
<b>Recommend Usage</b>	ELISA Immunohistochemistry (1:50-1:200) The optimal working dilution should be determined by the end user.
<b>Storage Buffer</b>	In PBS, pH7.4 (150 mM NaCl, 0.02% sodium azide and 50% glycerol)

**Storage Instruction**

Store at -20°C or -80°C.  
Aliquot to avoid repeated freezing and thawing.

**Note**

This product contains sodium azide: a POISONOUS AND HAZARDOUS SUBSTANCE which should be handled by trained staff only.

## Applications

- Immunohistochemistry (Formalin/PFA-fixed paraffin-embedded sections)

Immunohistochemical analysis of paraffin-embedded human colon cancer using CEACAM1 recombinant monoclonal antibody, clone 10H8 (Cat # RAB07493) on a Leica Bond™ system. After dewaxing and hydration, antigen retrieval was mediated by high pressure in a citrate buffer (pH 6.0). Section was blocked with 10% normal goat serum 30min at RT. Then primary antibody (1% BSA) was incubated at 4°C overnight. The primary is detected by a Goat anti-rabbit IgG polymer labeled by HRP and visualized using 0.05% DAB.

- Enzyme-linked Immunoabsorbent Assay

## Gene Info — CEACAM1

**Entrez GeneID**[634](#)**Protein Accession#**[P13688](#)**Gene Name**

CEACAM1

**Gene Alias**

BGP, BGP1, BGPI

**Gene Description**

carcinoembryonic antigen-related cell adhesion molecule 1 (biliary glycoprotein)

**Omim ID**[109770](#)**Gene Ontology**[Hyperlink](#)**Gene Summary**

This gene encodes a member of the carcinoembryonic antigen (CEA) gene family, which belongs to the immunoglobulin superfamily. Two subgroups of the CEA family, the CEA cell adhesion molecules and the pregnancy-specific glycoproteins, are located within a 1.2 Mb cluster on the long arm of chromosome 19. Eleven pseudogenes of the CEA cell adhesion molecule subgroup are also found in the cluster. The encoded protein was originally described in bile ducts of liver as biliary glycoprotein. Subsequently, it was found to be a cell-cell adhesion molecule detected on leukocytes, epithelia, and endothelia. The encoded protein mediates cell adhesion via homophilic as well as heterophilic binding to other proteins of the subgroup. Multiple cellular activities have been attributed to the encoded protein, including roles in the differentiation and arrangement of tissue three-dimensional structure, angiogenesis, apoptosis, tumor suppression, metastasis, and the modulation of innate and adaptive immune responses. Multiple transcript variants encoding different isoforms have been reported, but the full-length nature of only two has been determined. [provided by RefSeq]

**Other Designations**

CD66a antigen|antigen CD66|biliary glycoprotein adhesion molecule|carcinoembryonic antigen-related cell adhesion molecule 1

**Disease**

- [Body Weight](#)
- [Diabetes Mellitus](#)
- [Genetic Predisposition to Disease](#)
- [Meningococcal Infections](#)
- [Metabolic Syndrome X](#)
- [Osteoporosis](#)