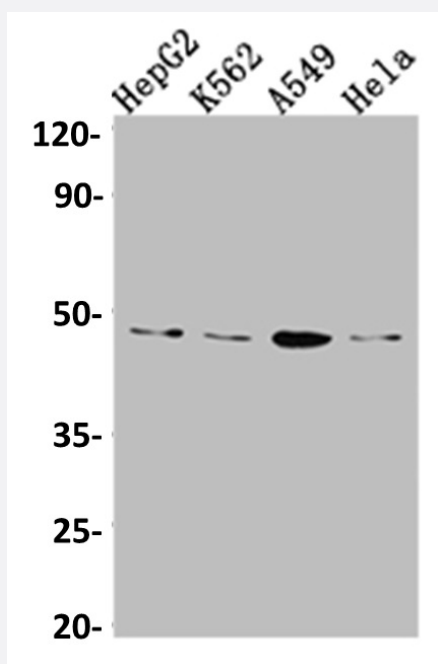


RecomAb™

## CD274 recombinant monoclonal antibody, clone 10D4

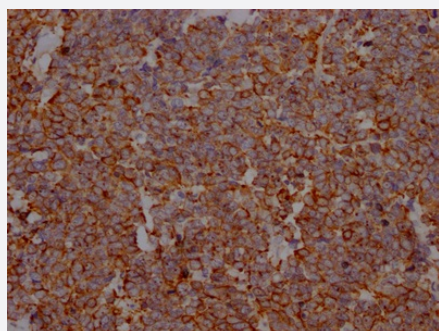
Catalog # RAB07489      Size 100 uL

### Applications



#### Western Blot (Cell lysate)

Western blot analysis of HepG2 whole cell lysate, K562 whole cell lysate, A549 whole cell lysate, HeLa whole cell lysate with CD274 recombinant monoclonal antibody, clone 10D4 (Cat # RAB07489).



#### Immunohistochemistry (Formalin/PFA-fixed paraffin-embedded sections)

Immunohistochemical analysis of paraffin-embedded human lung cancer using CD274 recombinant monoclonal antibody, clone 10D4 (Cat # RAB07489) on a Leica Bond™ system. After dewaxing and hydration, antigen retrieval was mediated by high pressure in a citrate buffer (pH 6.0). Section was blocked with 10% normal goat serum 30min at RT. Then primary antibody (1% BSA) was incubated at 4°C overnight. The primary is detected by a Goat anti-rabbit IgG polymer labeled by HRP and visualized using 0.05% DAB.

### Specification

#### Product Description

Rabbit recombinant monoclonal antibody raised against human CD274.

Antibody Species	Rabbit
Immunogen	Original antibody is raised against a synthetic peptide corresponding to human CD274.
Theoretical MW (kDa)	Calculated MW: 34, 2
Reactivity	Human
Form	Liquid
Purification	Affinity chromatography purification
Isotype	IgG
Recommend Usage	ELISA Immunohistochemistry (1:50-1:200) Western Blot (1:500-1:5000) The optimal working dilution should be determined by the end user.
Storage Buffer	In PBS, pH7.4 (150 mM NaCl, 0.02% sodium azide and 50% glycerol)
Storage Instruction	Store at -20°C or -80°C. Aliquot to avoid repeated freezing and thawing.
Note	This product contains sodium azide: a POISONOUS AND HAZARDOUS SUBSTANCE which should be handled by trained staff only.

## Applications

- Western Blot (Cell lysate)

Western blot analysis of HepG2 whole cell lysate, K562 whole cell lysate, A549 whole cell lysate, Hela whole cell lysate with CD274 recombinant monoclonal antibody, clone 10D4 (Cat # RAB07489).

- Immunohistochemistry (Formalin/PFA-fixed paraffin-embedded sections)

Immunohistochemical analysis of paraffin-embedded human lung cancer using CD274 recombinant monoclonal antibody, clone 10D4 (Cat # RAB07489) on a Leica Bond<sup>TM</sup> system. After dewaxing and hydration, antigen retrieval was mediated by high pressure in a citrate buffer (pH 6.0). Section was blocked with 10% normal goat serum 30min at RT. Then primary antibody (1% BSA) was incubated at 4°C overnight. The primary is detected by a Goat anti-rabbit IgG polymer labeled by HRP and visualized using 0.05% DAB.

- Enzyme-linked Immunoabsorbent Assay

## Gene Info — CD274

Entrez GeneID

[29126](#)

Protein Accession#	<a href="#">Q9NZQ7</a>
Gene Name	CD274
Gene Alias	B7-H, B7H1, MGC142294, MGC142296, PD-L1, PDCD1L1, PDCD1LG1, PDL1
Gene Description	CD274 molecule
Omim ID	<a href="#">605402</a>
Gene Ontology	<a href="#">Hyperlink</a>
Other Designations	CD274 antigen OTTHUMP00000021029 programmed cell death 1 ligand 1

## Pathway

- [Cell adhesion molecules \(CAMs\)](#)

## Disease

- [Addison Disease](#)
- [Arthritis](#)
- [Autoimmune Diseases](#)
- [Diabetes Mellitus](#)
- [Genetic Predisposition to Disease](#)
- [Graves Disease](#)
- [Lupus Erythematosus](#)
- [Multiple Sclerosis](#)
- [Narcolepsy](#)
- [Rheumatoid Nodule](#)