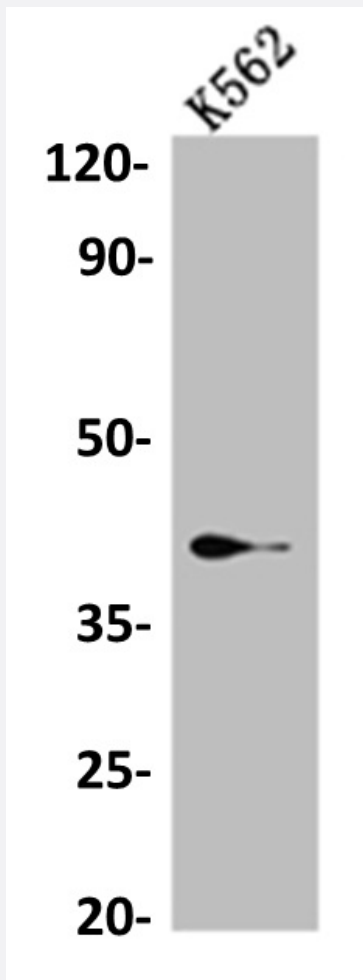


RecomAb™

## SAE1 recombinant monoclonal antibody, clone 9D8

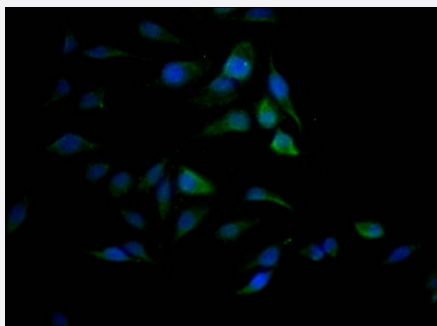
Catalog # RAB07481      Size 100 uL

### Applications



#### Western Blot (Cell lysate)

Western blot analysis of K562 whole cell lysate with SAE1 recombinant monoclonal antibody, clone 9D8 (Cat # RAB07481).



#### Immunofluorescence

Immunofluorescent staining of HeLa Cells with SAE1 recombinant monoclonal antibody, clone 9D8 (Cat # RAB07481). The cells were fixed in 4% formaldehyde, permeated by 0.2% TritonX-100, and blocked in 10% normal Goat Serum. The cells were then incubated with the antibody overnight at 4°C. Nuclear DNA was labeled in blue with DAPI. The secondary antibody was FITC-conjugated AffiniPure Goat Anti-Rabbit IgG (H+L).

## Specification

<b>Product Description</b>	Rabbit recombinant monoclonal antibody raised against human SAE1.
<b>Antibody Species</b>	Rabbit
<b>Immunogen</b>	Original antibody is raised against a synthetic peptide corresponding to human SAE1.
<b>Theoretical MW (kDa)</b>	Calculated MW: 39, 3
<b>Reactivity</b>	Human
<b>Form</b>	Liquid
<b>Purification</b>	Affinity chromatography purification
<b>Isotype</b>	IgG
<b>Recommend Usage</b>	ELISA Immunofluorescence (1:20-1:200) Western Blot (1:500-1:5000) The optimal working dilution should be determined by the end user.
<b>Storage Buffer</b>	In PBS, pH7.4 (150 mM NaCl, 0.02% sodium azide and 50% glycerol)
<b>Storage Instruction</b>	Store at -20°C or -80°C. Aliquot to avoid repeated freezing and thawing.
<b>Note</b>	This product contains sodium azide: a POISONOUS AND HAZARDOUS SUBSTANCE which should be handled by trained staff only.

## Applications

- Western Blot (Cell lysate)

Western blot analysis of K562 whole cell lysate with SAE1 recombinant monoclonal antibody, clone 9D8 (Cat # RAB07481).

- Immunofluorescence

Immunofluorescent staining of Hela Cells with SAE1 recombinant monoclonal antibody, clone 9D8 (Cat # RAB07481). The cells were fixed in 4% formaldehyde, permeated by 0.2% TritonX-100, and blocked in 10% normal Goat Serum. The cells were then incubated with the antibody overnight at 4°C. Nuclear DNA was labeled in blue with DAPI. The secondary antibody was FITC-conjugated AffiniPure Goat Anti-Rabbit IgG (H+L).

- Enzyme-linked Immunoabsorbent Assay

## Gene Info — SAE1

Entrez GeneID	<a href="#">10055</a>
Protein Accession#	<a href="#">Q9UBE0</a>
Gene Name	SAE1
Gene Alias	AOS1, FLJ3091, HSPC140, SUA1
Gene Description	SUMO1 activating enzyme subunit 1
Gene Ontology	<a href="#">Hyperlink</a>
Other Designations	SUMO-1 activating enzyme E1 N subunit SUMO-1 activating enzyme subunit 1 activator of SUMO 1 sentrin/SUMO-activating protein AOS1 ubiquitin-like protein SUMO-1 activating enzyme

## Pathway

- [Ubiquitin mediated proteolysis](#)