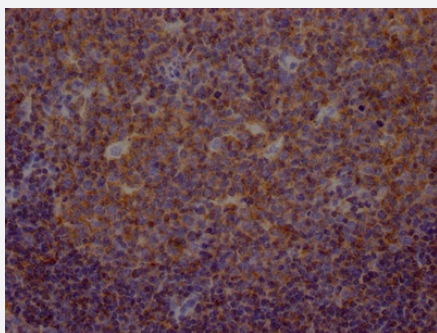


RecomAb™

# METAP2 recombinant monoclonal antibody, clone 8F2

Catalog # RAB07475      Size 100 uL

## Applications



### Immunohistochemistry (Formalin/PFA-fixed paraffin-embedded sections)

Immunohistochemical analysis of paraffin-embedded human tonsil tissue using METAP2 recombinant monoclonal antibody, clone 8F2 (Cat # RAB07475) on a Leica Bond™ system. After dewaxing and hydration, antigen retrieval was mediated by high pressure in a citrate buffer (pH 6.0). Section was blocked with 10% normal goat serum 30min at RT. Then primary antibody (1% BSA) was incubated at 4°C overnight. The primary is detected by a Goat anti-rabbit IgG polymer labeled by HRP and visualized using 0.05% DAB.

## Specification

Product Description	Rabbit recombinant monoclonal antibody raised against human METAP2.
Antibody Species	Rabbit
Immunogen	Original antibody is raised against a synthetic peptide corresponding to human METAP2.
Reactivity	Human
Form	Liquid
Purification	Affinity chromatography purification
Isotype	IgG
Recommend Usage	ELISA Immunohistochemistry (1:50-1:200) The optimal working dilution should be determined by the end user.
Storage Buffer	In PBS, pH7.4 (150 mM NaCl, 0.02% sodium azide and 50% glycerol)

**Storage Instruction**

Store at -20°C or -80°C.  
Aliquot to avoid repeated freezing and thawing.

**Note**

This product contains sodium azide: a POISONOUS AND HAZARDOUS SUBSTANCE which should be handled by trained staff only.

## Applications

- Immunohistochemistry (Formalin/PFA-fixed paraffin-embedded sections)

Immunohistochemical analysis of paraffin-embedded human tonsil tissue using METAP2 recombinant monoclonal antibody, clone 8F2 (Cat # RAB07475) on a Leica Bond<sup>TM</sup> system. After dewaxing and hydration, antigen retrieval was mediated by high pressure in a citrate buffer (pH 6.0). Section was blocked with 10% normal goat serum 30min at RT. Then primary antibody (1% BSA) was incubated at 4°C overnight. The primary is detected by a Goat anti-rabbit IgG polymer labeled by HRP and visualized using 0.05% DAB.

- Enzyme-linked Immunoabsorbent Assay

## Gene Info — METAP2

**Entrez GeneID** [10988](#)

**Protein Accession#** [P50579](#)

**Gene Name** METAP2

**Gene Alias** MAP2, MNPEP, p67, p67eIF2

**Gene Description** methionyl aminopeptidase 2

**Omim ID** [601870](#)

**Gene Ontology** [Hyperlink](#)

**Gene Summary**

This gene is a member of the methionyl aminopeptidase family and encodes a protein that binds 2 cobalt or manganese ions. This protein functions both by protecting the alpha subunit of eukaryotic initiation factor 2 from inhibitory phosphorylation and by removing the amino-terminal methionine residue from nascent protein. Increased expression of this gene is associated with various forms of cancer and the anti-cancer drugs fumagillin and ovalicin inhibit the protein by irreversibly binding to its active site. A pseudogene of this gene is located on chromosome 2. [provided by RefSeq]

**Other Designations**

eIF-2-associated p67 homolog|initiation factor 2-associated 67 kDa glycoprotein|peptidase M 2

## Disease

- [Genetic Predisposition to Disease](#)
- [Lung Neoplasms](#)