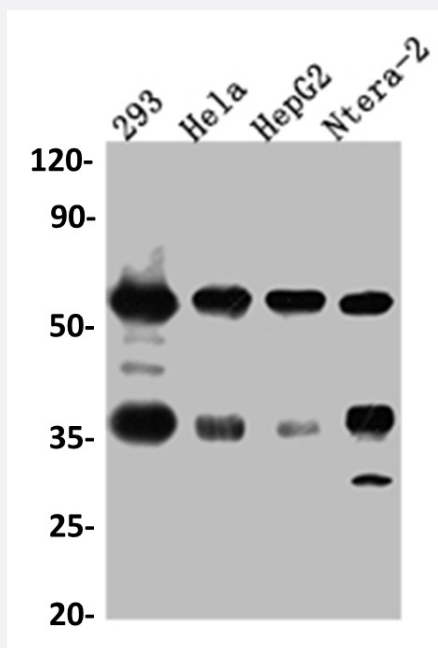


RecomAb™

NONO recombinant monoclonal antibody, clone 8C11

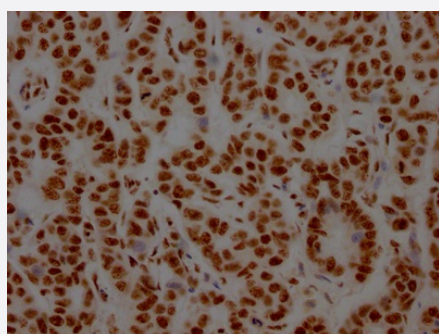
Catalog # RAB07472 Size 100 uL

Applications



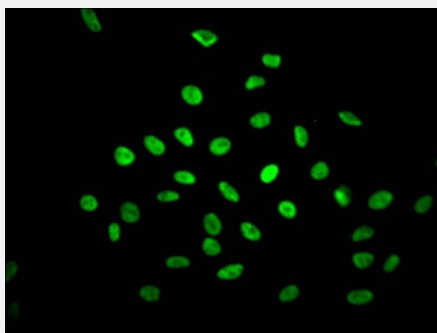
Western Blot (Cell lysate)

Western blot analysis of 293 whole cell lysate, HeLa whole cell lysate, HepG2 whole cell lysate, Ntera-2 whole cell lysate with NONO recombinant monoclonal antibody, clone 8C11 (Cat # RAB07472).



Immunohistochemistry (Formalin/PFA-fixed paraffin-embedded sections)

Immunohistochemical analysis of paraffin-embedded human breast cancer using NONO recombinant monoclonal antibody, clone 8C11 (Cat # RAB07472) on a Leica Bond™ system. After dewaxing and hydration, antigen retrieval was mediated by high pressure in a citrate buffer (pH 6.0). Section was blocked with 10% normal goat serum 30min at RT. Then primary antibody (1% BSA) was incubated at 4°C overnight. The primary is detected by a Goat anti-rabbit IgG polymer labeled by HRP and visualized using 0.05% DAB.



Immunofluorescence

Immunofluorescent staining of Hela Cells with NONO recombinant monoclonal antibody, clone 8C11 (Cat # RAB07472). The cells were fixed in 4% formaldehyde, permeated by 0.2% TritonX-100, and blocked in 10% normal Goat Serum. The cells were then incubated with the antibody overnight at 4°C. Nuclear DNA was labeled in blue with DAPI. The secondary antibody was FITC-conjugated AffiniPure Goat Anti-Rabbit IgG (H+L).

Specification

| | |
|-----------------------------|--|
| Product Description | Rabbit recombinant monoclonal antibody raised against human NONO. |
| Antibody Species | Rabbit |
| Immunogen | Original antibody is raised against a synthetic peptide corresponding to human NONO. |
| Theoretical MW (kDa) | Calculated MW: 55, 4 |
| Reactivity | Human |
| Form | Liquid |
| Purification | Affinity chromatography purification |
| Isotype | IgG |
| Recommend Usage | ELISA Immunofluorescence (1:20-1:200) Immunohistochemistry (1:50-1:200) Western Blot (1:500-1:5000) The optimal working dilution should be determined by the end user. |
| Storage Buffer | In PBS, pH7.4 (150 mM NaCl, 0.02% sodium azide and 50% glycerol) |
| Storage Instruction | Store at -20°C or -80°C. Aliquot to avoid repeated freezing and thawing. |
| Note | This product contains sodium azide: a POISONOUS AND HAZARDOUS SUBSTANCE which should be handled by trained staff only. |

Applications

- Western Blot (Cell lysate)

Western blot analysis of 293 whole cell lysate, Hela whole cell lysate, HepG2 whole cell lysate, Ntera-2 whole cell lysate with NONO recombinant monoclonal antibody, clone 8C11 (Cat # RAB07472).

- Immunohistochemistry (Formalin/PFA-fixed paraffin-embedded sections)

Immunohistochemical analysis of paraffin-embedded human breast cancer using NONO recombinant monoclonal antibody, clone 8C11 (Cat # RAB07472) on a Leica Bond™ system. After dewaxing and hydration, antigen retrieval was mediated by high pressure in a citrate buffer (pH 6.0). Section was blocked with 10% normal goat serum 30min at RT. Then primary antibody (1% BSA) was incubated at 4°C overnight. The primary is detected by a Goat anti-rabbit IgG polymer labeled by HRP and visualized using 0.05% DAB.

- Immunofluorescence

Immunofluorescent staining of Hela Cells with NONO recombinant monoclonal antibody, clone 8C11 (Cat # RAB07472). The cells were fixed in 4% formaldehyde, permeated by 0.2% TritonX-100, and blocked in 10% normal Goat Serum. The cells were then incubated with the antibody overnight at 4°C. Nuclear DNA was labeled in blue with DAPI. The secondary antibody was FITC-conjugated AffiniPure Goat Anti-Rabbit IgG (H+L).

- Enzyme-linked Immunoabsorbent Assay

Gene Info — NONO

Entrez GeneID [4841](#)

Protein Accession# [Q15233](#)

Gene Name NONO

Gene Alias NMT55, NRB54, P54, P54NRB

Gene Description non-POU domain containing, octamer-binding

Omim ID [300084](#)

Gene Ontology [Hyperlink](#)

Gene Summary This gene encodes an RNA-binding protein which plays various roles in the nucleus, including transcriptional regulation and RNA splicing. A rearrangement between this gene and the transcription factor E3 gene has been observed in papillary renal cell carcinoma. Alternatively spliced transcript variants have been described. Pseudogenes exist on Chromosomes 2 and 16. [provided by RefSeq]

Other Designations Nuclear RNA-binding protein, 54-kD|OTTHUMP00000023506|OTTHUMP00000023507|OTTHUMP00000023508|non-POU-domain-containing, octamer-binding|non-Pou domain-containing octamer (ATGCAAAT) binding protein