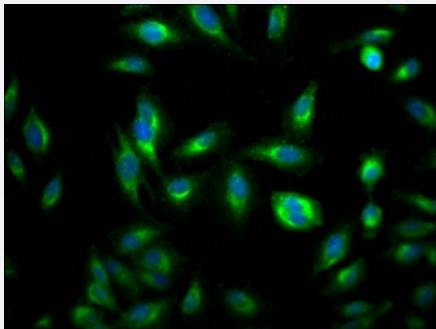


RecomAb™

RHEB recombinant monoclonal antibody, clone 7G7

Catalog # RAB07468 Size 100 uL

Applications



Immunofluorescence

Immunofluorescent staining of HeLa Cells with RHEB recombinant monoclonal antibody, clone 7G7 (Cat # RAB07468). The cells were fixed in 4% formaldehyde, permeated by 0.2% TritonX-100, and blocked in 10% normal Goat Serum. The cells were then incubated with the antibody overnight at 4°C. Nuclear DNA was labeled in blue with DAPI. The secondary antibody was FITC-conjugated AffiniPure Goat Anti-Rabbit IgG (H+L).

Specification

Product Description	Rabbit recombinant monoclonal antibody raised against human RHEB.
Antibody Species	Rabbit
Immunogen	Original antibody is raised against a synthetic peptide corresponding to human RHEB.
Reactivity	Human
Form	Liquid
Purification	Affinity chromatography purification
Isotype	IgG
Recommend Usage	ELISA Immunofluorescence (1:20-1:200) The optimal working dilution should be determined by the end user.
Storage Buffer	In PBS, pH7.4 (150 mM NaCl, 0.02% sodium azide and 50% glycerol)
Storage Instruction	Store at -20°C or -80°C. Aliquot to avoid repeated freezing and thawing.

Note

This product contains sodium azide: a POISONOUS AND HAZARDOUS SUBSTANCE which should be handled by trained staff only.

Applications

- Immunofluorescence

Immunofluorescent staining of Hela Cells with RHEB recombinant monoclonal antibody, clone 7G7 (Cat # RAB07468). The cells were fixed in 4% formaldehyde, permeated by 0.2% TritonX-100, and blocked in 10% normal Goat Serum. The cells were then incubated with the antibody overnight at 4°C. Nuclear DNA was labeled in blue with DAPI. The secondary antibody was FITC-conjugated AffiniPure Goat Anti-Rabbit IgG (H+L).

- Enzyme-linked Immunoabsorbent Assay

Gene Info — RHEB

Entrez GeneID	6009
---------------	----------------------

Protein Accession#	Q15382
--------------------	------------------------

Gene Name	RHEB
-----------	------

Gene Alias	MGC111559, RHEB2
------------	------------------

Gene Description	Ras homolog enriched in brain
------------------	-------------------------------

Omim ID	601293
---------	------------------------

Gene Ontology	Hyperlink
---------------	---------------------------

Gene Summary	This gene is a member of the small GTPase superfamily and encodes a lipid-anchored, cell membrane protein with five repeats of the RAS-related GTP-binding region. This protein is vital in regulation of growth and cell cycle progression due to its role in the insulin/TOR/S6K signaling pathway. The protein has GTPase activity and shuttles between a GDP-bound form and a GTP-bound form, and farnesylation of the protein is required for this activity. Three pseudogenes have been mapped, two on chromosome 10 and one on chromosome 22. [provided by RefSeq]
--------------	---

Other Designations	GTP-binding protein Rheb Ras homolog enriched in brain 2
--------------------	--

Pathway

- [Insulin signaling pathway](#)

- [mTOR signaling pathway](#)

Disease

- [Genetic Predisposition to Disease](#)
- [Urinary Bladder Neoplasms](#)