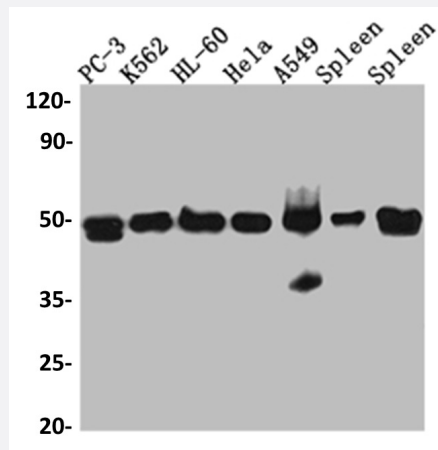


RecomAb™

ACTR3 recombinant monoclonal antibody, clone 7E5

Catalog # RAB07466 Size 100 uL

Applications



Western Blot

Western blot analysis of PC-3 whole cell lysate, K562 whole cell lysate, HL-60 whole cell lysate, A549 whole cell lysate, Mouse Spleen whole cell lysate, Rat Spleen whole cell lysate with ACTR3 recombinant monoclonal antibody, clone 7E5 (Cat # RAB07466).

Specification

Product Description	Rabbit recombinant monoclonal antibody raised against human ACTR3.
Antibody Species	Rabbit
Immunogen	Original antibody is raised against a synthetic peptide corresponding to human ACTR3.
Theoretical MW (kDa)	48
Reactivity	Human, Mouse, Rat
Form	Liquid
Purification	Affinity chromatography purification
Isotype	IgG

Recommend Usage	ELISA Western Blot (1:500-1:5000) The optimal working dilution should be determined by the end user.
Storage Buffer	In PBS, pH7.4 (150 mM NaCl, 0.02% sodium azide and 50% glycerol)
Storage Instruction	Store at -20°C or -80°C. Aliquot to avoid repeated freezing and thawing.
Note	This product contains sodium azide: a POISONOUS AND HAZARDOUS SUBSTANCE which should be handled by trained staff only.

Applications

- Western Blot

Western blot analysis of PC-3 whole cell lysate, K562 whole cell lysate, HL-60 whole cell lysate, A549 whole cell lysate, Mouse Spleen whole cell lysate, Rat Spleen whole cell lysate with ACTR3 recombinant monoclonal antibody, clone 7E5 (Cat # RAB07466).

- Enzyme-linked Immunoabsorbent Assay

Gene Info — ACTR3

Entrez GeneID	10096
Protein Accession#	P61158
Gene Name	ACTR3
Gene Alias	ARP3
Gene Description	ARP3 actin-related protein 3 homolog (yeast)
Omim ID	604222
Gene Ontology	Hyperlink
Gene Summary	The specific function of this gene has not yet been determined; however, the protein it encodes is known to be a major constituent of the ARP2/3 complex. This complex is located at the cell surface and is essential to cell shape and motility through lamellipodial actin assembly and protrusion. [provided by RefSeq
Other Designations	ARP3 actin-related protein 3 homolog