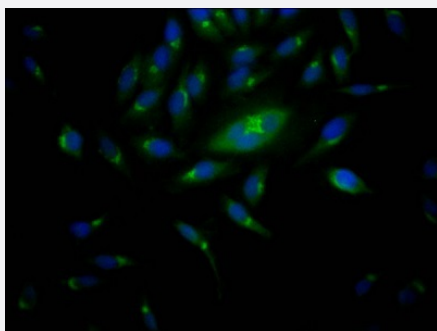


RecomAb™

RPS6KB1 recombinant monoclonal antibody, clone 7D4

Catalog # RAB07465 Size 100 uL

Applications



Immunofluorescence

Immunofluorescent staining of HeLa Cells with RPS6KB1 recombinant monoclonal antibody, clone 7D4 (Cat # RAB07465). The cells were fixed in 4% formaldehyde, permeated by 0.2% TritonX-100, and blocked in 10% normal Goat Serum. The cells were then incubated with the antibody overnight at 4°C. Nuclear DNA was labeled in blue with DAPI. The secondary antibody was FITC-conjugated AffiniPure Goat Anti-Rabbit IgG (H+L).

Specification

Product Description	Rabbit recombinant monoclonal antibody raised against human RPS6KB1.
Antibody Species	Rabbit
Immunogen	Original antibody is raised against a synthetic peptide corresponding to human RPS6KB1.
Reactivity	Human
Form	Liquid
Purification	Affinity chromatography purification
Isotype	IgG
Recommend Usage	ELISA Immunofluorescence (1:20-1:200) The optimal working dilution should be determined by the end user.
Storage Buffer	In PBS, pH7.4 (150 mM NaCl, 0.02% sodium azide and 50% glycerol)
Storage Instruction	Store at -20°C or -80°C. Aliquot to avoid repeated freezing and thawing.

Note

This product contains sodium azide: a POISONOUS AND HAZARDOUS SUBSTANCE which should be handled by trained staff only.

Applications

- Immunofluorescence

Immunofluorescent staining of Hela Cells with RPS6KB1 recombinant monoclonal antibody, clone 7D4 (Cat # RAB07465). The cells were fixed in 4% formaldehyde, permeated by 0.2% TritonX-100, and blocked in 10% normal Goat Serum. The cells were then incubated with the antibody overnight at 4°C. Nuclear DNA was labeled in blue with DAPI. The secondary antibody was FITC-conjugated AffiniPure Goat Anti-Rabbit IgG (H+L).

- Enzyme-linked Immunoabsorbent Assay

Gene Info — RPS6KB1

Entrez GeneID [6198](#)

Protein Accession# [P23443](#)

Gene Name RPS6KB1

Gene Alias PS6K, S6K, S6K1, STK14A, p70(S6K)-alpha, p70-S6K, p70-alpha

Gene Description ribosomal protein S6 kinase, 70kDa, polypeptide 1

Omim ID [608938](#)

Gene Ontology [Hyperlink](#)

Gene Summary This gene encodes a member of the RSK (ribosomal S6 kinase) family of serine/threonine kinases. This kinase contains 2 non-identical kinase catalytic domains and phosphorylates several residues of the S6 ribosomal protein. The kinase activity of this protein leads to an increase in protein synthesis and cell proliferation. Amplification of the region of DNA encoding this gene and overexpression of this kinase are seen in some breast cancer cell lines. Alternate translational start sites have been described and alternate transcriptional splice variants have been observed but have not been thoroughly characterized. [provided by RefSeq]

Other Designations p70 S6 kinase, alpha 1|p70 S6 kinase, alpha 2|ribosomal protein S6 kinase, 70kD, polypeptide 1|serine/threonine kinase 14 alpha

Pathway

- [Acute myeloid leukemia](#)

- [ErbB signaling pathway](#)
- [Fc gamma R-mediated phagocytosis](#)
- [Insulin signaling pathway](#)
- [mTOR signaling pathway](#)
- [TGF-beta signaling pathway](#)

Disease

- [Cardiovascular Diseases](#)
- [Diabetes Mellitus](#)
- [Edema](#)
- [Head and Neck Neoplasms](#)
- [Neoplasm Recurrence](#)
- [Neoplasms](#)