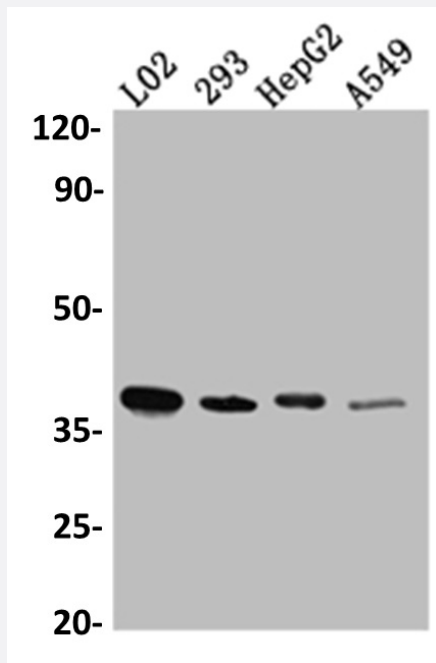


RecomAb™

# LRG1 recombinant monoclonal antibody, clone 7A1

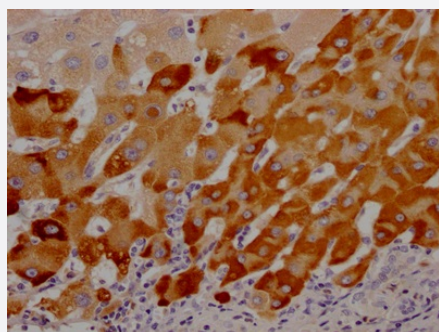
Catalog # RAB07462      Size 100 uL

## Applications



### Western Blot (Cell lysate)

Western blot analysis of L02 whole cell lysate, HEK293 whole cell lysate, HepG2 whole cell lysate, A549 whole cell lysate with LRG1 recombinant monoclonal antibody, clone 7A1 (Cat # RAB07462).



### Immunohistochemistry (Formalin/PFA-fixed paraffin-embedded sections)

Immunohistochemical analysis of paraffin-embedded human liver cancer using LRG1 recombinant monoclonal antibody, clone 7A1 (Cat # RAB07462) on a Leica Bond™ system. After dewaxing and hydration, antigen retrieval was mediated by high pressure in a citrate buffer (pH 6.0). Section was blocked with 10% normal goat serum 30min at RT. Then primary antibody (1% BSA) was incubated at 4°C overnight. The primary is detected by a Goat anti-rabbit IgG polymer labeled by HRP and visualized using 0.05% DAB.

## Specification

### Product Description

Rabbit recombinant monoclonal antibody raised against human LRG1.

<b>Antibody Species</b>	Rabbit
<b>Immunogen</b>	Original antibody is raised against a synthetic peptide corresponding to human LRG1.
<b>Theoretical MW (kDa)</b>	39
<b>Reactivity</b>	Human
<b>Form</b>	Liquid
<b>Purification</b>	Affinity chromatography purification
<b>Isotype</b>	IgG
<b>Recommend Usage</b>	ELISA Immunohistochemistry (1:50-1:200) Western Blot (1:500-1:5000) The optimal working dilution should be determined by the end user.
<b>Storage Buffer</b>	In PBS, pH7.4 (150 mM NaCl, 0.02% sodium azide and 50% glycerol)
<b>Storage Instruction</b>	Store at -20°C or -80°C. Aliquot to avoid repeated freezing and thawing.
<b>Note</b>	This product contains sodium azide: a POISONOUS AND HAZARDOUS SUBSTANCE which should be handled by trained staff only.

## Applications

- Western Blot (Cell lysate)

Western blot analysis of L02 whole cell lysate, HEK293 whole cell lysate, HepG2 whole cell lysate, A549 whole cell lysate with LRG1 recombinant monoclonal antibody, clone 7A1 (Cat # RAB07462).

- Immunohistochemistry (Formalin/PFA-fixed paraffin-embedded sections)

Immunohistochemical analysis of paraffin-embedded human liver cancer using LRG1 recombinant monoclonal antibody, clone 7A1 (Cat # RAB07462) on a Leica Bond<sup>TM</sup> system. After dewaxing and hydration, antigen retrieval was mediated by high pressure in a citrate buffer (pH 6.0). Section was blocked with 10% normal goat serum 30min at RT. Then primary antibody (1% BSA) was incubated at 4°C overnight. The primary is detected by a Goat anti-rabbit IgG polymer labeled by HRP and visualized using 0.05% DAB.

- Enzyme-linked Immunoabsorbent Assay

## Gene Info — LRG1

Entrez GeneID	<a href="#">116844</a>
Protein Accession#	<a href="#">P02750</a>
Gene Name	LRG1
Gene Alias	HMFT1766, LRG
Gene Description	leucine-rich alpha-2-glycoprotein 1
Omim ID	<a href="#">611289</a>
Gene Ontology	<a href="#">Hyperlink</a>
Gene Summary	The leucine-rich repeat (LRR) family of proteins, including LRG1, have been shown to be involved in protein-protein interaction, signal transduction, and cell adhesion and development. LRG1 is expressed during granulocyte differentiation (O'Donnell et al., 2002 [PubMed 12223515]).[supplied by OMIM]
Other Designations	1300008B03Rik 2310031E04Rik leucine rich alpha 2 glycoprotein