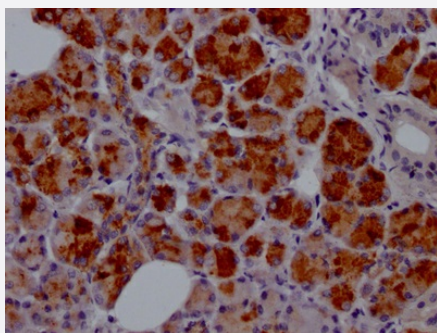


RecomAb™

# LTF recombinant monoclonal antibody, clone 6B6

Catalog # RAB07455      Size 100 uL

## Applications



### Immunohistochemistry (Formalin/PFA-fixed paraffin-embedded sections)

Immunohistochemical analysis of paraffin-embedded human salivary gland tissue using LTF recombinant monoclonal antibody, clone 6B6 (Cat # RAB07455) on a Leica Bond™ system. After dewaxing and hydration, antigen retrieval was mediated by high pressure in a citrate buffer (pH 6.0). Section was blocked with 10% normal goat serum 30min at RT. Then primary antibody (1% BSA) was incubated at 4°C overnight. The primary is detected by a Goat anti-rabbit IgG polymer labeled by HRP and visualized using 0.05% DAB.

## Specification

Product Description	Rabbit recombinant monoclonal antibody raised against human LTF.
Antibody Species	Rabbit
Immunogen	Original antibody is raised against a synthetic peptide corresponding to human LTF.
Reactivity	Human
Form	Liquid
Purification	Affinity chromatography purification
Isotype	IgG
Recommend Usage	ELISA Immunohistochemistry (1:50-1:200) The optimal working dilution should be determined by the end user.
Storage Buffer	In PBS, pH7.4 (150 mM NaCl, 0.02% sodium azide and 50% glycerol)

**Storage Instruction**

Store at -20°C or -80°C.  
Aliquot to avoid repeated freezing and thawing.

**Note**

This product contains sodium azide: a POISONOUS AND HAZARDOUS SUBSTANCE which should be handled by trained staff only.

## Applications

- Immunohistochemistry (Formalin/PFA-fixed paraffin-embedded sections)

Immunohistochemical analysis of paraffin-embedded human salivary gland tissue using LTF recombinant monoclonal antibody, clone 6B6 (Cat # RAB07455) on a Leica Bond<sup>TM</sup> system. After dewaxing and hydration, antigen retrieval was mediated by high pressure in a citrate buffer (pH 6.0). Section was blocked with 10% normal goat serum 30min at RT. Then primary antibody (1% BSA) was incubated at 4°C overnight. The primary is detected by a Goat anti-rabbit IgG polymer labeled by HRP and visualized using 0.05% DAB.

- Enzyme-linked Immunoabsorbent Assay

## Gene Info — LTF

**Entrez GeneID**[4057](#)**Protein Accession#**[P02788](#)**Gene Name**

LTF

**Gene Alias**

GIG12, HLF2, LF

**Gene Description**

lactotransferrin

**Omim ID**[150210](#)**Gene Ontology**[Hyperlink](#)**Gene Summary**

This gene is a member of the transferrin family of genes and its protein product is found in the secondary granules of neutrophils. The protein is a major iron-binding protein in milk and body secretions with an antimicrobial activity, making it an important component of the non-specific immune system. The protein demonstrates a broad spectrum of properties, including regulation of iron homeostasis, host defense against a broad range of microbial infections, anti-inflammatory activity, regulation of cellular growth and differentiation and protection against cancer development and metastasis. [provided by RefSeq]

**Other Designations**

growth-inhibiting protein 12|lactoferrin|neutrophil lactoferrin|talalactoferrin

## Disease

- [Abortion](#)
- [Aggressive Periodontitis](#)
- [Alzheimer disease](#)
- [Asthma](#)
- [Bronchiolitis](#)
- [Chorioamnionitis](#)
- [Chronic Periodontitis](#)
- [Cognition](#)
- [Dental Caries](#)
- [Diarrhea](#)
- [Disease Progression](#)
- [Dyslipidemias](#)
- [Fetal Membranes](#)
- [Genetic Predisposition to Disease](#)
- [Glomerulonephritis](#)
- [Glucose Intolerance](#)
- [Infant](#)
- [Obesity](#)
- [Obstetric Labor](#)
- [Pre-Eclampsia](#)
- [Premature Birth](#)
- [Respiratory Syncytial Virus Infections](#)
- [Tobacco Use Disorder](#)