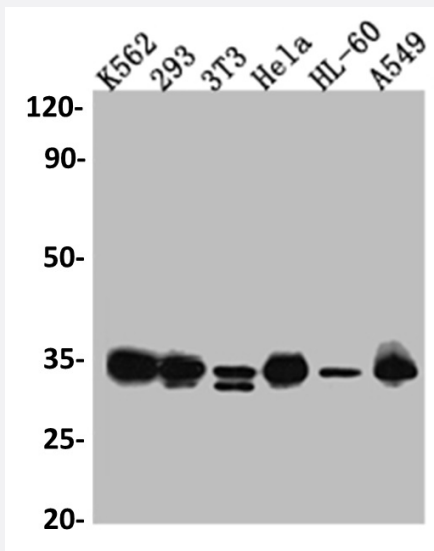


RecomAb™

CDK2 recombinant monoclonal antibody, clone 6A5

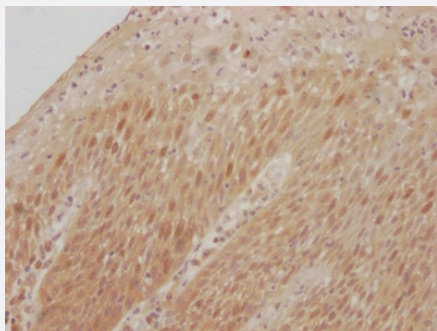
Catalog # RAB07454 Size 100 uL

Applications



Western Blot (Cell lysate)

Western blot analysis of K562 whole cell lysate, HEK293 whole cell lysate, NIH/3T3 whole cell lysate, HeLa whole cell lysate, HL-60 whole cell lysate, A549 whole cell lysate with CDK2 recombinant monoclonal antibody, clone 6A5 (Cat # RAB07454).



Immunohistochemistry (Formalin/PFA-fixed paraffin-embedded sections)

Immunohistochemical analysis of paraffin-embedded human tonsil tissue using CDK2 recombinant monoclonal antibody, clone 6A5 (Cat # RAB07454) on a Leica Bond™ system. After dewaxing and hydration, antigen retrieval was mediated by high pressure in a citrate buffer (pH 6.0). Section was blocked with 10% normal goat serum 30min at RT. Then primary antibody (1% BSA) was incubated at 4°C overnight. The primary is detected by a Goat anti-rabbit IgG polymer labeled by HRP and visualized using 0.05% DAB.

Specification

Product Description	Rabbit recombinant monoclonal antibody raised against human CDK2.
Antibody Species	Rabbit

Immunogen	Original antibody is raised against a synthetic peptide corresponding to human CDK2.
Theoretical MW (kDa)	Calculated MW: 34, 3
Reactivity	Human, Mouse
Form	Liquid
Purification	Affinity chromatography purification
Isotype	IgG
Recommend Usage	ELISA Immunohistochemistry (1:50-1:200) Western Blot (1:500-1:5000) The optimal working dilution should be determined by the end user.
Storage Buffer	In PBS, pH7.4 (150 mM NaCl, 0.02% sodium azide and 50% glycerol)
Storage Instruction	Store at -20°C or -80°C. Aliquot to avoid repeated freezing and thawing.
Note	This product contains sodium azide: a POISONOUS AND HAZARDOUS SUBSTANCE which should be handled by trained staff only.

Applications

- Western Blot (Cell lysate)

Western blot analysis of K562 whole cell lysate, HEK293 whole cell lysate, NIH/3T3 whole cell lysate, Hela whole cell lysate, HL-60 whole cell lysate, A549 whole cell lysate with CDK2 recombinant monoclonal antibody, clone 6A5 (Cat # RAB07454).

- Immunohistochemistry (Formalin/PFA-fixed paraffin-embedded sections)

Immunohistochemical analysis of paraffin-embedded human tonsil tissue using CDK2 recombinant monoclonal antibody, clone 6A5 (Cat # RAB07454) on a Leica BondTM system. After dewaxing and hydration, antigen retrieval was mediated by high pressure in a citrate buffer (pH 6.0). Section was blocked with 10% normal goat serum 30min at RT. Then primary antibody (1% BSA) was incubated at 4°C overnight. The primary is detected by a Goat anti-rabbit IgG polymer labeled by HRP and visualized using 0.05% DAB.

- Enzyme-linked Immunoabsorbent Assay

Gene Info — CDK2

Entrez GeneID [1017](#)

Protein Accession# [P24941](#)

Gene Name	CDK2
Gene Alias	p33(CDK2)
Gene Description	cyclin-dependent kinase 2
Omim ID	116953
Gene Ontology	Hyperlink
Gene Summary	The protein encoded by this gene is a member of the Ser/Thr protein kinase family. This protein kinase is highly similar to the gene products of <i>S. cerevisiae</i> cdc28, and <i>S. pombe</i> cdc2. It is a catalytic subunit of the cyclin-dependent protein kinase complex, whose activity is restricted to the G1-S phase, and essential for cell cycle G1/S phase transition. This protein associates with and regulated by the regulatory subunits of the complex including cyclin A or E, CDK inhibitor p21Cip1 (CDKN1A) and p27Kip1 (CDKN1B). Its activity is also regulated by its protein phosphorylation. Two alternatively spliced variants and multiple transcription initiation sites of this gene have been reported. [provided by RefSeq]
Other Designations	cdc2-related protein kinase cell division kinase 2 p33 protein kinase

Pathway

- [Cell cycle](#)
- [p53 signaling pathway](#)
- [Pathways in cancer](#)
- [Prostate cancer](#)
- [Small cell lung cancer](#)

Disease

- [Azoospermia](#)
- [Breast cancer](#)
- [Breast Neoplasms](#)
- [Chromosome Aberrations](#)
- [Diabetes Mellitus](#)
- [Genetic Predisposition to Disease](#)

- [Kidney Failure](#)
- [Lymphoma](#)
- [Neoplasm Invasiveness](#)
- [Ovarian cancer](#)
- [Ovarian Neoplasms](#)