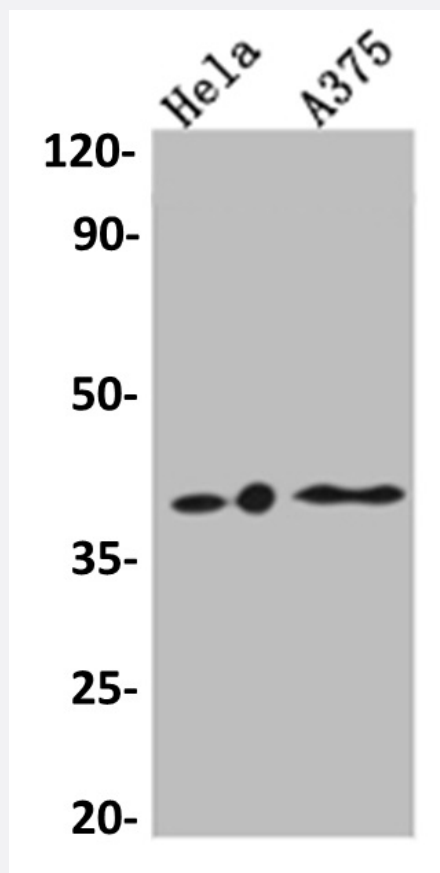


RecomAb™

# LPAR1 recombinant monoclonal antibody, clone 4C3

Catalog # RAB07440      Size 100 uL

## Applications



### Western Blot (Cell lysate)

Western blot analysis of HeLa whole cell lysate, A375 whole cell lysate with LPAR1 recombinant monoclonal antibody, clone 4C3 (Cat # RAB07440).

## Specification

Product Description	Rabbit recombinant monoclonal antibody raised against human LPAR1.
Antibody Species	Rabbit
Immunogen	Original antibody is raised against a synthetic peptide corresponding to human LPAR1.
Theoretical MW (kDa)	42

Reactivity	Human
Form	Liquid
Purification	Affinity chromatography purification
Isotype	IgG
Recommend Usage	ELISA Western Blot (1:500-1:5000) The optimal working dilution should be determined by the end user.
Storage Buffer	In PBS, pH7.4 (150 mM NaCl, 0.02% sodium azide and 50% glycerol)
Storage Instruction	Store at -20°C or -80°C. Aliquot to avoid repeated freezing and thawing.
Note	This product contains sodium azide: a POISONOUS AND HAZARDOUS SUBSTANCE which should be handled by trained staff only.

## Applications

- Western Blot (Cell lysate)

Western blot analysis of Hela whole cell lysate, A375 whole cell lysate with LPAR1 recombinant monoclonal antibody, clone 4C3 (Cat # RAB07440).

- Enzyme-linked Immunoabsorbent Assay

## Gene Info — LPAR1

Entrez GeneID	<a href="#">1902</a>
Protein Accession#	<a href="#">Q92633</a>
Gene Name	LPAR1
Gene Alias	EDG2, GPR26, Gpcr26, LPA1, Mrec1.3, VZG1, edg-2, rec.1.3, vzg-1
Gene Description	lysophosphatidic acid receptor 1
Omim ID	<a href="#">602282</a>
Gene Ontology	<a href="#">Hyperlink</a>

**Gene Summary**

The integral membrane protein encoded by this gene is a lysophosphatidic acid (LPA) receptor from a group known as EDG receptors. These receptors are members of the G protein-coupled receptor superfamily. Utilized by LPA for cell signaling, EDG receptors mediate diverse biologic functions, including proliferation, platelet aggregation, smooth muscle contraction, inhibition of neuroblastoma cell differentiation, chemotaxis, and tumor cell invasion. Two transcript variants encoding the same protein have been identified for this gene [provided by RefSeq]

**Other Designations**

OTTHUMP00000021903|OTTHUMP00000021904|OTTHUMP00000021905|endothelial differentiation, lysophosphatidic acid G-protein-coupled receptor, 2|ventricular zone gene 1

**Pathway**

- [Gap junction](#)
- [Neuroactive ligand-receptor interaction](#)

**Disease**

- [Cardiovascular Diseases](#)
- [Diabetes Mellitus](#)
- [Edema](#)
- [Genetic Predisposition to Disease](#)
- [Lupus Erythematosus](#)
- [Osteoarthritis](#)