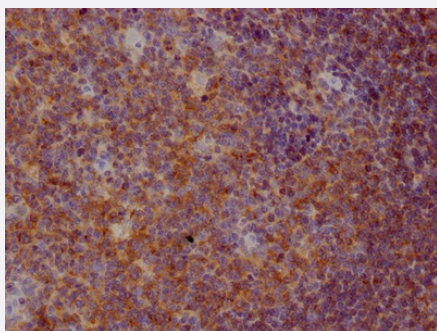


RecomAb™

# CD22 recombinant monoclonal antibody, clone 3D8

Catalog # RAB07433      Size 100 uL

## Applications



### Immunohistochemistry (Formalin/PFA-fixed paraffin-embedded sections)

Immunohistochemical analysis of paraffin-embedded human tonsil tissue using CD22 recombinant monoclonal antibody, clone 3D8 (Cat # RAB07433) on a Leica Bond™ system. After dewaxing and hydration, antigen retrieval was mediated by high pressure in a citrate buffer (pH 6.0). Section was blocked with 10% normal goat serum 30min at RT. Then primary antibody (1% BSA) was incubated at 4°C overnight. The primary is detected by a Goat anti-rabbit IgG polymer labeled by HRP and visualized using 0.05% DAB.

## Specification

**Product Description** Rabbit recombinant monoclonal antibody raised against human CD22.

**Antibody Species** Rabbit

**Immunogen** Original antibody is raised against a synthetic peptide corresponding to human CD22.

**Reactivity** Human

**Form** Liquid

**Purification** Affinity chromatography purification

**Isotype** IgG

**Recommend Usage** ELISA  
Immunohistochemistry (1:50-1:200)  
The optimal working dilution should be determined by the end user.

**Storage Buffer** In PBS, pH7.4 (150 mM NaCl, 0.02% sodium azide and 50% glycerol)

**Storage Instruction**

Store at -20°C or -80°C.  
Aliquot to avoid repeated freezing and thawing.

**Note**

This product contains sodium azide: a POISONOUS AND HAZARDOUS SUBSTANCE which should be handled by trained staff only.

## Applications

- Immunohistochemistry (Formalin/PFA-fixed paraffin-embedded sections)

Immunohistochemical analysis of paraffin-embedded human tonsil tissue using CD22 recombinant monoclonal antibody, clone 3D8 (Cat # RAB07433) on a Leica Bond<sup>TM</sup> system. After dewaxing and hydration, antigen retrieval was mediated by high pressure in a citrate buffer (pH 6.0). Section was blocked with 10% normal goat serum 30min at RT. Then primary antibody (1% BSA) was incubated at 4°C overnight. The primary is detected by a Goat anti-rabbit IgG polymer labeled by HRP and visualized using 0.05% DAB.

- Enzyme-linked Immunoabsorbent Assay

## Gene Info — CD22

**Entrez GeneID**[933](#)**Protein Accession#**[P20273](#)**Gene Name**

CD22

**Gene Alias**

FLJ22814, MGC130020, SIGLEC-2, SIGLEC2

**Gene Description**

CD22 molecule

**Omim ID**[107266](#)**Gene Ontology**[Hyperlink](#)**Other Designations**

CD22 antigen

## Pathway

- [B cell receptor signaling pathway](#)
- [Cell adhesion molecules \(CAMs\)](#)
- [Hematopoietic cell lineage](#)

## Disease

- [Cardiovascular Diseases](#)
- [Diabetes Mellitus](#)
- [Edema](#)
- [Genetic Predisposition to Disease](#)
- [Lupus Erythematosus](#)
- [Scleroderma](#)