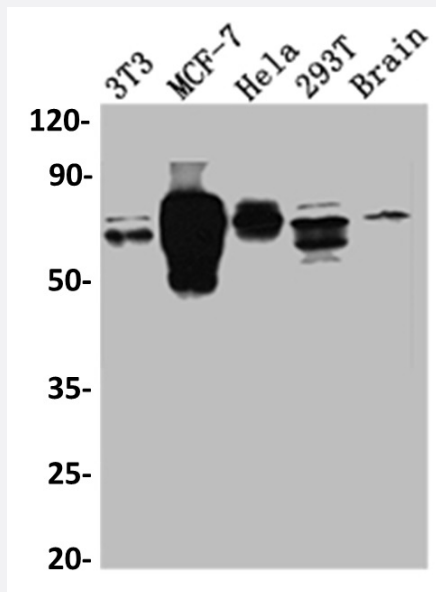


RecomAb™

RPS6KB1 recombinant monoclonal antibody, clone 1H8

Catalog # RAB07421 Size 100 uL

Applications



Western Blot

Western blot analysis of NIH/3T3 whole cell lysate, MCF-7 whole cell lysate, HeLa whole cell lysate, 293T whole cell lysate, Mouse Brain whole cell lysate with RPS6KB1 recombinant monoclonal antibody, clone 1H8 (Cat # RAB07421).

Specification

Product Description	Rabbit recombinant monoclonal antibody raised against human RPS6KB1.
Antibody Species	Rabbit
Immunogen	Original antibody is raised against a synthetic peptide corresponding to human RPS6KB1.
Theoretical MW (kDa)	Calculated MW: 60, 5
Reactivity	Human, Mouse
Form	Liquid
Purification	Affinity chromatography purification
Isotype	IgG

Recommend Usage	ELISA Western Blot (1:500-1:5000) The optimal working dilution should be determined by the end user.
Storage Buffer	In PBS, pH7.4 (150 mM NaCl, 0.02% sodium azide and 50% glycerol)
Storage Instruction	Store at -20°C or -80°C. Aliquot to avoid repeated freezing and thawing.
Note	This product contains sodium azide: a POISONOUS AND HAZARDOUS SUBSTANCE which should be handled by trained staff only.

Applications

- Western Blot

Western blot analysis of NIH/3T3 whole cell lysate, MCF-7 whole cell lysate, Hela whole cell lysate, 293T whole cell lysate, Mouse Brain whole cell lysate with RPS6KB1 recombinant monoclonal antibody, clone 1H8 (Cat # RAB07421).

- Enzyme-linked Immunoabsorbent Assay

Gene Info — RPS6KB1

Entrez GeneID	6198
Protein Accession#	P23443
Gene Name	RPS6KB1
Gene Alias	PS6K, S6K, S6K1, STK14A, p70(S6K)-alpha, p70-S6K, p70-alpha
Gene Description	ribosomal protein S6 kinase, 70kDa, polypeptide 1
Omim ID	608938
Gene Ontology	Hyperlink
Gene Summary	This gene encodes a member of the RSK (ribosomal S6 kinase) family of serine/threonine kinases. This kinase contains 2 non-identical kinase catalytic domains and phosphorylates several residues of the S6 ribosomal protein. The kinase activity of this protein leads to an increase in protein synthesis and cell proliferation. Amplification of the region of DNA encoding this gene and overexpression of this kinase are seen in some breast cancer cell lines. Alternate translational start sites have been described and alternate transcriptional splice variants have been observed but have not been thoroughly characterized. [provided by RefSeq]
Other Designations	p70 S6 kinase, alpha 1 p70 S6 kinase, alpha 2 ribosomal protein S6 kinase, 70kD, polypeptide 1 serine/threonine kinase 14 alpha

Pathway

- [Acute myeloid leukemia](#)
- [ErbB signaling pathway](#)
- [Fc gamma R-mediated phagocytosis](#)
- [Insulin signaling pathway](#)
- [mTOR signaling pathway](#)
- [TGF-beta signaling pathway](#)

Disease

- [Cardiovascular Diseases](#)
- [Diabetes Mellitus](#)
- [Edema](#)
- [Head and Neck Neoplasms](#)
- [Neoplasm Recurrence](#)
- [Neoplasms](#)