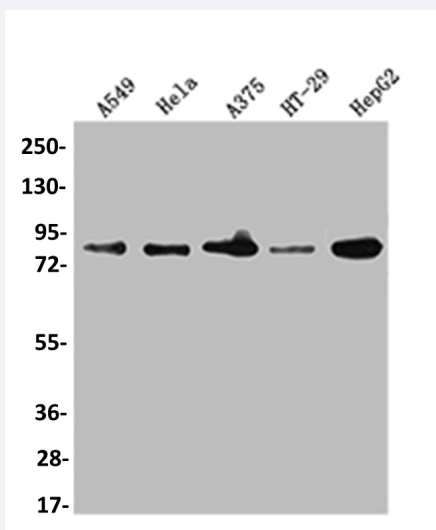


RecomAb™

FURIN recombinant monoclonal antibody, clone 1C3

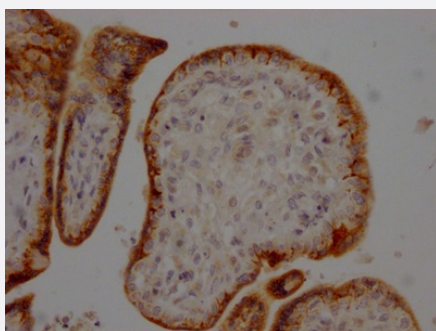
Catalog # RAB07416 Size 100 uL

Applications



Western Blot (Cell lysate)

Western blot analysis of A549 whole cell lysate, HeLa whole cell lysate, A375 whole cell lysate, HT-29 whole cell lysate, HepG2 whole cell lysate with FURIN recombinant monoclonal antibody, clone 1C3 (Cat # RAB07416).



Immunohistochemistry (Formalin/PFA-fixed paraffin-embedded sections)

Immunohistochemical analysis of paraffin-embedded human placenta tissue using FURIN recombinant monoclonal antibody, clone 1C3 (Cat # RAB07416) on a Leica Bond™ system. After dewaxing and hydration, antigen retrieval was mediated by high pressure in a citrate buffer (pH 6.0). Section was blocked with 10% normal goat serum 30min at RT. Then primary antibody (1% BSA) was incubated at 4°C overnight. The primary is detected by a Goat anti-rabbit IgG polymer labeled by HRP and visualized using 0.05% DAB.

Specification

Product Description	Rabbit recombinant monoclonal antibody raised against human FURIN.
Antibody Species	Rabbit

Immunogen	Original antibody is raised against a synthetic peptide corresponding to human FURIN.
Theoretical MW (kDa)	Calculated MW: 87
Reactivity	Human
Form	Liquid
Purification	Affinity chromatography purification
Isotype	IgG
Recommend Usage	ELISA Immunohistochemistry (1:50-1:200) Western Blot (1:500-1:5000) The optimal working dilution should be determined by the end user.
Storage Buffer	In PBS, pH7.4 (150 mM NaCl, 0.02% sodium azide and 50% glycerol)
Storage Instruction	Store at -20°C or -80°C. Aliquot to avoid repeated freezing and thawing.
Note	This product contains sodium azide: a POISONOUS AND HAZARDOUS SUBSTANCE which should be handled by trained staff only.

Applications

- Western Blot (Cell lysate)

Western blot analysis of A549 whole cell lysate, Hela whole cell lysate, A375 whole cell lysate, HT-29 whole cell lysate, HepG2 whole cell lysate with FURIN recombinant monoclonal antibody, clone 1C3 (Cat # RAB07416).

- Immunohistochemistry (Formalin/PFA-fixed paraffin-embedded sections)

Immunohistochemical analysis of paraffin-embedded human placenta tissue using FURIN recombinant monoclonal antibody, clone 1C3 (Cat # RAB07416) on a Leica BondTM system. After dewaxing and hydration, antigen retrieval was mediated by high pressure in a citrate buffer (pH 6.0). Section was blocked with 10% normal goat serum 30min at RT. Then primary antibody (1% BSA) was incubated at 4°C overnight. The primary is detected by a Goat anti-rabbit IgG polymer labeled by HRP and visualized using 0.05% DAB.

- Enzyme-linked Immunoabsorbent Assay

Gene Info — FURIN

Entrez GeneID [5045](#)

Protein Accession# [P09958](#)

Gene Name	FURIN
Gene Alias	FUR, PACE, PCSK3, SPC1
Gene Description	furin (paired basic amino acid cleaving enzyme)
Omim ID	136950
Gene Ontology	Hyperlink
Gene Summary	<p>The protein encoded by this gene belongs to the subtilisin-like proprotein convertase family. The members of this family are proprotein convertases that process latent precursor proteins into their biologically active products. This encoded protein is a calcium-dependent serine endoprotease that can efficiently cleave precursor proteins at their paired basic amino acid processing sites. Some of its substrates are: parathyroid hormone, transforming growth factor beta 1 precursor, proalbumin, pro-beta-secretase, membrane type-1 matrix metalloproteinase, beta subunit of pro-neuronal growth factor and von Willebrand factor. It is also thought to be one of the proteases responsible for the activation of HIV envelope glycoproteins gp160 and gp140. This gene is thought to play a role in tumor progression. The use of alternate polyadenylation sites has been found for this gene. [provided by RefSeq]</p>
Other Designations	FES upstream region dibasic processing enzyme furin furin, membrane associated receptor protein paired basic amino acid cleaving enzyme (furin, membrane associated receptor protein) proprotein convertase subtilisin/kexin type 3

Disease

- [Cardiovascular Diseases](#)
- [Colonic Neoplasms](#)
- [Colorectal Neoplasms](#)
- [Diabetes Mellitus](#)
- [Disease Progression](#)
- [Edema](#)
- [Genetic Predisposition to Disease](#)
- [Hepatitis B](#)
- [Hypertension](#)
- [Liver Cirrhosis](#)
- [Rectal Neoplasms](#)