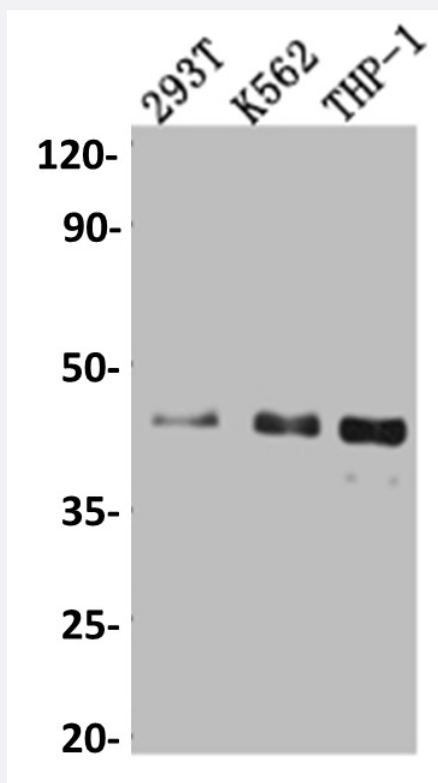


RecomAb™

ISL1 recombinant monoclonal antibody, clone 1A1

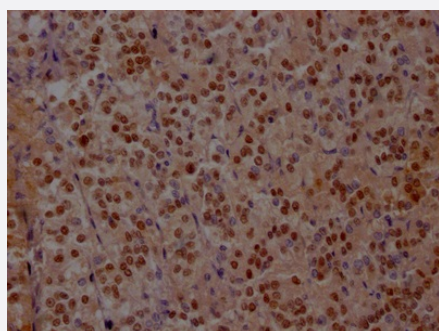
Catalog # RAB07414 Size 100 uL

Applications



Western Blot (Cell lysate)

Western blot analysis of 293T whole cell lysate, K562 whole cell lysate, THP-1 whole cell lysate with ISL1 recombinant monoclonal antibody, clone 1A1 (Cat # RAB07414).



Immunohistochemistry (Formalin/PFA-fixed paraffin-embedded sections)

Immunohistochemical analysis of paraffin-embedded human adrenal gland tissue using ISL1 recombinant monoclonal antibody, clone 1A1 (Cat # RAB07414) on a Leica Bond™ system. After dewaxing and hydration, antigen retrieval was mediated by high pressure in a citrate buffer (pH 6.0). Section was blocked with 10% normal goat serum 30min at RT. Then primary antibody (1% BSA) was incubated at 4°C overnight. The primary is detected by a Goat anti-rabbit IgG polymer labeled by HRP and visualized using 0.05% DAB.

Specification

Product Description	Rabbit recombinant monoclonal antibody raised against human ISL1.
Antibody Species	Rabbit
Immunogen	Original antibody is raised against a synthetic peptide corresponding to human ISL1.
Theoretical MW (kDa)	40
Reactivity	Human
Form	Liquid
Purification	Affinity chromatography purification
Isotype	IgG
Recommend Usage	ELISA Immunohistochemistry (1:50-1:200) Western Blot (1:500-1:5000) The optimal working dilution should be determined by the end user.
Storage Buffer	In PBS, pH7.4 (150 mM NaCl, 0.02% sodium azide and 50% glycerol)
Storage Instruction	Store at -20°C or -80°C. Aliquot to avoid repeated freezing and thawing.
Note	This product contains sodium azide: a POISONOUS AND HAZARDOUS SUBSTANCE which should be handled by trained staff only.

Applications

- Western Blot (Cell lysate)

Western blot analysis of 293T whole cell lysate, K562 whole cell lysate, THP-1 whole cell lysate with ISL1 recombinant monoclonal antibody, clone 1A1 (Cat # RAB07414).

- Immunohistochemistry (Formalin/PFA-fixed paraffin-embedded sections)

Immunohistochemical analysis of paraffin-embedded human adrenal gland tissue using ISL1 recombinant monoclonal antibody, clone 1A1 (Cat # RAB07414) on a Leica BondTM system. After dewaxing and hydration, antigen retrieval was mediated by high pressure in a citrate buffer (pH 6.0). Section was blocked with 10% normal goat serum 30min at RT. Then primary antibody (1% BSA) was incubated at 4°C overnight. The primary is detected by a Goat anti-rabbit IgG polymer labeled by HRP and visualized using 0.05% DAB.

- Enzyme-linked Immunoabsorbent Assay

Gene Info — ISL1

Entrez GeneID [3670](#)**Protein Accession#** [P61371](#)**Gene Name** ISL1**Gene Alias** Isl-1**Gene Description** ISL LIM homeobox 1**Omim ID** [600366](#)**Gene Ontology** [Hyperlink](#)

Gene Summary This gene encodes a member of the LIM/homeodomain family of transcription factors. The encoded protein binds to the enhancer region of the insulin gene, among others, and may play an important role in regulating insulin gene expression. The encoded protein is central to the development of pancreatic cell lineages and may also be required for motor neuron generation. Mutations in this gene have been associated with maturity-onset diabetes of the young. [provided by RefSeq]

Other Designations ISL1 transcription factor, LIM/homeodomain|islet-1

Disease

- [Attention Deficit Disorder with Hyperactivity](#)
- [Diabetes Mellitus](#)
- [Genetic Predisposition to Disease](#)
- [Heart Defects](#)
- [Tourette Syndrome](#)