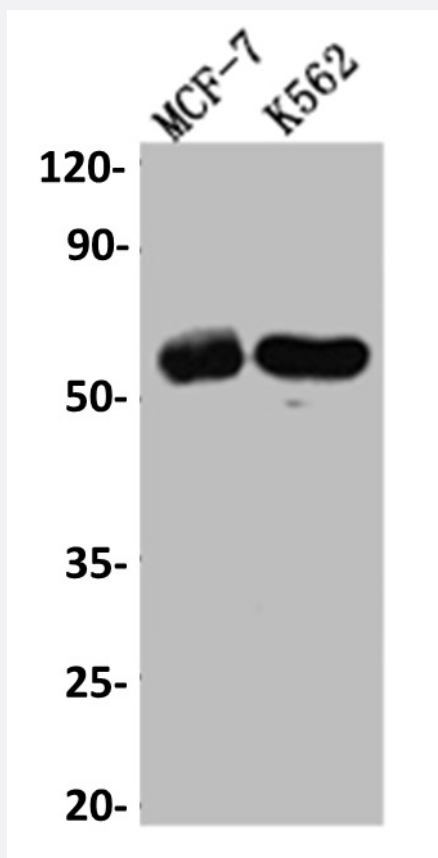


RecomAb™

## HDAC2 recombinant monoclonal antibody, clone 9H4

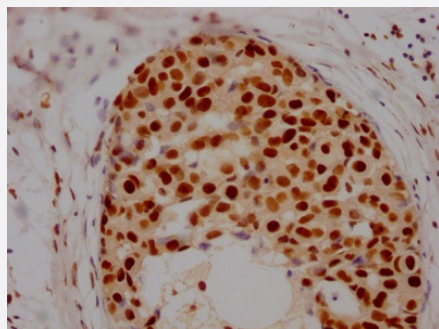
Catalog # RAB07405      Size 100 uL

### Applications



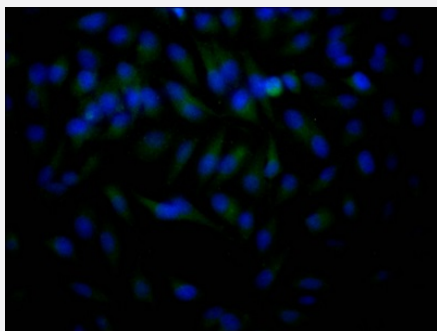
#### Western Blot (Cell lysate)

Western blot analysis of MCF-7 whole cell lysate, K562 whole cell lysate with HDAC2 recombinant monoclonal antibody, clone 9H4 (Cat # RAB07405).



#### Immunohistochemistry (Formalin/PFA-fixed paraffin-embedded sections)

Immunohistochemical analysis of paraffin-embedded human breast cancer using HDAC2 recombinant monoclonal antibody, clone 9H4 (Cat # RAB07405) on a Leica Bond™ system. After dewaxing and hydration, antigen retrieval was mediated by high pressure in a citrate buffer (pH 6.0). Section was blocked with 10% normal goat serum 30min at RT. Then primary antibody (1% BSA) was incubated at 4°C overnight. The primary is detected by a Goat anti-rabbit IgG polymer labeled by HRP and visualized using 0.05% DAB.



## Immunofluorescence

Immunofluorescent staining of Hela Cells with HDAC2 recombinant monoclonal antibody, clone 9H4 (Cat # RAB07405). The cells were fixed in 4% formaldehyde, permeated by 0.2% TritonX-100, and blocked in 10% normal Goat Serum. The cells were then incubated with the antibody overnight at 4°C. Nuclear DNA was labeled in blue with DAPI. The secondary antibody was FITC-conjugated AffiniPure Goat Anti-Rabbit IgG (H+L).

## Specification

<b>Product Description</b>	Rabbit recombinant monoclonal antibody raised against human HDAC2.
<b>Antibody Species</b>	Rabbit
<b>Immunogen</b>	Original antibody is raised against a synthetic peptide corresponding to human HDAC2.
<b>Theoretical MW (kDa)</b>	Calculated MW: 56, 5
<b>Reactivity</b>	Human
<b>Form</b>	Liquid
<b>Purification</b>	Affinity chromatography purification
<b>Isotype</b>	IgG
<b>Recommend Usage</b>	ELISA Immunofluorescence (1:20-1:200) Immunohistochemistry (1:50-1:200) Western Blot (1:500-1:5000) The optimal working dilution should be determined by the end user.
<b>Storage Buffer</b>	In PBS, pH7.4 (150 mM NaCl, 0.02% sodium azide and 50% glycerol)
<b>Storage Instruction</b>	Store at -20°C or -80°C. Aliquot to avoid repeated freezing and thawing.
<b>Note</b>	This product contains sodium azide: a POISONOUS AND HAZARDOUS SUBSTANCE which should be handled by trained staff only.

## Applications

- Western Blot (Cell lysate)

Western blot analysis of MCF-7 whole cell lysate, K562 whole cell lysate with HDAC2 recombinant monoclonal antibody, clone 9H4 (Cat # RAB07405).

- Immunohistochemistry (Formalin/PFA-fixed paraffin-embedded sections)

Immunohistochemical analysis of paraffin-embedded human breast cancer using HDAC2 recombinant monoclonal antibody, clone 9H4 (Cat # RAB07405) on a Leica Bond<sup>TM</sup> system. After dewaxing and hydration, antigen retrieval was mediated by high pressure in a citrate buffer (pH 6.0). Section was blocked with 10% normal goat serum 30min at RT. Then primary antibody (1% BSA) was incubated at 4°C overnight. The primary is detected by a Goat anti-rabbit IgG polymer labeled by HRP and visualized using 0.05% DAB.

- Immunofluorescence

Immunofluorescent staining of Hela Cells with HDAC2 recombinant monoclonal antibody, clone 9H4 (Cat # RAB07405). The cells were fixed in 4% formaldehyde, permeated by 0.2% TritonX-100, and blocked in 10% normal Goat Serum. The cells were then incubated with the antibody overnight at 4°C. Nuclear DNA was labeled in blue with DAPI. The secondary antibody was FITC-conjugated AffiniPure Goat Anti-Rabbit IgG (H+L).

- Enzyme-linked Immunoabsorbent Assay

## Gene Info — HDAC2

Entrez GeneID [3066](#)

Protein Accession# [Q92769](#)

Gene Name HDAC2

Gene Alias RPD3, YAF1

Gene Description histone deacetylase 2

Omim ID [605164](#)

Gene Ontology [Hyperlink](#)

**Gene Summary** This gene product belongs to the histone deacetylase family. Histone deacetylases act via the formation of large multiprotein complexes and are responsible for the deacetylation of lysine residue s on the N-terminal region of the core histones (H2A, H2B, H3 and H4). This protein also forms transcriptional repressor complexes by associating with many different proteins, including YY1, a mammalian zinc-finger transcription factor. Thus it plays an important role in transcriptional regulation, cell cycle progression and developmental events. [provided by RefSeq]

**Other Designations** OTTHUMP00000040427|YY1-associated factor 1|transcriptional regulator homolog RPD3

## Pathway

- [Cell cycle](#)
- [Chronic myeloid leukemia](#)
- [Notch signaling pathway](#)
- [Pathways in cancer](#)

## Disease

- [ACTH-Secreting Pituitary Adenoma](#)
- [Adenoma](#)
- [Asthma](#)
- [Breast cancer](#)
- [Breast Neoplasms](#)
- [Cardiovascular Diseases](#)
- [Diabetes Mellitus](#)
- [Edema](#)
- [Genetic Predisposition to Disease](#)
- [Neoplasms](#)
- [Ovarian cancer](#)
- [Ovarian Neoplasms](#)