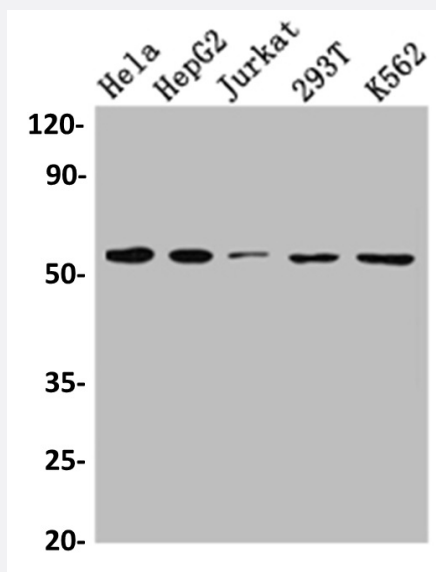


RecomAb™

# SLC16A1 recombinant monoclonal antibody, clone 9D12

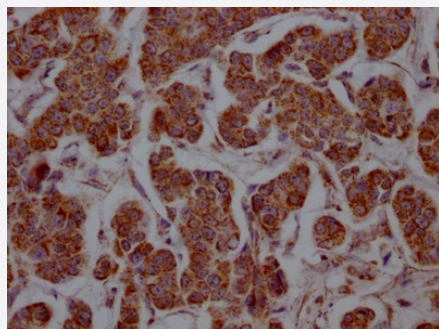
Catalog # RAB07401      Size 100 uL

## Applications



### Western Blot (Cell lysate)

Western blot analysis of HeLa whole cell lysate, HepG2 whole cell lysate, Jurkat whole cell lysate, 293T whole cell lysate, K562 whole cell lysate with SLC16A1 recombinant monoclonal antibody, clone 9D12 (Cat # RAB07401).



### Immunohistochemistry (Formalin/PFA-fixed paraffin-embedded sections)

Immunohistochemical analysis of paraffin-embedded human breast cancer using SLC16A1 recombinant monoclonal antibody, clone 9D12 (Cat # RAB07401) on a Leica Bond™ system. After dewaxing and hydration, antigen retrieval was mediated by high pressure in a citrate buffer (pH 6.0). Section was blocked with 10% normal goat serum 30min at RT. Then primary antibody (1% BSA) was incubated at 4°C overnight. The primary is detected by a Goat anti-rabbit IgG polymer labeled by HRP and visualized using 0.05% DAB.

## Specification

**Product Description** Rabbit recombinant monoclonal antibody raised against human SLC16A1.

**Antibody Species** Rabbit

Immunogen	Original antibody is raised against a synthetic peptide corresponding to human SLC16A1.
Theoretical MW (kDa)	Calculated MW: 54, 4
Reactivity	Human
Form	Liquid
Purification	Affinity chromatography purification
Isotype	IgG
Recommend Usage	ELISA Immunohistochemistry (1:50-1:200) Western Blot (1:500-1:5000) The optimal working dilution should be determined by the end user.
Storage Buffer	In PBS, pH7.4 (150 mM NaCl, 0.02% sodium azide and 50% glycerol)
Storage Instruction	Store at -20°C or -80°C. Aliquot to avoid repeated freezing and thawing.
Note	This product contains sodium azide: a POISONOUS AND HAZARDOUS SUBSTANCE which should be handled by trained staff only.

## Applications

- Western Blot (Cell lysate)

Western blot analysis of Hela whole cell lysate, HepG2 whole cell lysate, Jurkat whole cell lysate, 293T whole cell lysate, K562 whole cell lysate with SLC16A1 recombinant monoclonal antibody, clone 9D12 (Cat # RAB07401).

- Immunohistochemistry (Formalin/PFA-fixed paraffin-embedded sections)

Immunohistochemical analysis of paraffin-embedded human breast cancer using SLC16A1 recombinant monoclonal antibody, clone 9D12 (Cat # RAB07401) on a Leica Bond™ system. After dewaxing and hydration, antigen retrieval was mediated by high pressure in a citrate buffer (pH 6.0). Section was blocked with 10% normal goat serum 30min at RT. Then primary antibody (1% BSA) was incubated at 4°C overnight. The primary is detected by a Goat anti-rabbit IgG polymer labeled by HRP and visualized using 0.05% DAB.

- Enzyme-linked Immunoabsorbent Assay

## Gene Info — SLC16A1

Entrez GeneID [6566](#)

Protein Accession# [P53985](#)

Gene Name	SLC16A1
Gene Alias	FLJ36745, HHF7, MCT, MCT1, MGC44475
Gene Description	solute carrier family 16, member 1 (monocarboxylic acid transporter 1)
Omim ID	<a href="#">245340 600682</a>
Gene Ontology	<a href="#">Hyperlink</a>
Gene Summary	The SLC16A1 gene encodes a monocarboxylate transporter (MCT1) that mediates the movement of lactate and pyruvate across cell membranes. Import and export of these substrates by tissues such as erythrocytes, muscle, intestine, and kidney are ascribed largely to the action of a proton-coupled MCT (Garcia et al., 1994 [PubMed 8124722]).[supplied by OMIM]
Other Designations	OTTHUMP00000013960 monocarboxylate transporter 1 solute carrier family 16 (monocarboxylic acid transporters), member 1 solute carrier family 16, member 1

## Disease

- [Cardiovascular Diseases](#)
- [Diabetes Mellitus](#)
- [Edema](#)
- [Hearing Loss](#)
- [Kidney Failure](#)