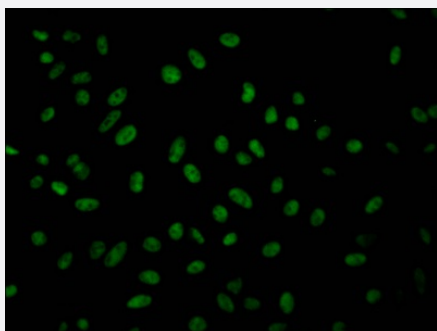


RecomAb™

# GMNN recombinant monoclonal antibody, clone 8H8

Catalog # RAB07397      Size 100 uL

## Applications



### Immunofluorescence

Immunofluorescent staining of Hela Cells with GMNN recombinant monoclonal antibody, clone 8H8 (Cat # RAB07397). The cells were fixed in 4% formaldehyde, permeated by 0.2% TritonX-100, and blocked in 10% normal Goat Serum. The cells were then incubated with the antibody overnight at 4°C. Nuclear DNA was labeled in blue with DAPI. The secondary antibody was FITC-conjugated AffiniPure Goat Anti-Rabbit IgG (H+L).

## Specification

Product Description	Rabbit recombinant monoclonal antibody raised against human GMNN.
Antibody Species	Rabbit
Immunogen	Original antibody is raised against a synthetic peptide corresponding to human GMNN.
Reactivity	Human
Form	Liquid
Purification	Affinity chromatography purification
Isotype	IgG
Recommend Usage	ELISA Immunofluorescence (1:20-1:200) The optimal working dilution should be determined by the end user.
Storage Buffer	In PBS, pH7.4 (150 mM NaCl, 0.02% sodium azide and 50% glycerol)
Storage Instruction	Store at -20°C or -80°C. Aliquot to avoid repeated freezing and thawing.

**Note**

This product contains sodium azide: a POISONOUS AND HAZARDOUS SUBSTANCE which should be handled by trained staff only.

## Applications

- Immunofluorescence

Immunofluorescent staining of Hela Cells with GMNN recombinant monoclonal antibody, clone 8H8 (Cat # RAB07397). The cells were fixed in 4% formaldehyde, permeated by 0.2% TritonX-100, and blocked in 10% normal Goat Serum. The cells were then incubated with the antibody overnight at 4°C. Nuclear DNA was labeled in blue with DAPI. The secondary antibody was FITC-conjugated AffiniPure Goat Anti-Rabbit IgG (H+L).

- Enzyme-linked Immunoabsorbent Assay

## Gene Info — GMNN

Entrez GeneID	<a href="#">51053</a>
Protein Accession#	<a href="#">O75496</a>
Gene Name	GMNN
Gene Alias	Gem, RP3-369A17.3
Gene Description	geminin, DNA replication inhibitor
Omim ID	<a href="#">602842</a>
Gene Ontology	<a href="#">Hyperlink</a>
Gene Summary	O
Other Designations	OTTHUMP00000039393 geminin

## Disease

- [Breast cancer](#)
- [Breast Neoplasms](#)
- [Cardiovascular Diseases](#)
- [Diabetes Mellitus](#)

- [Edema](#)
- [Genetic Predisposition to Disease](#)