

NanoAb™

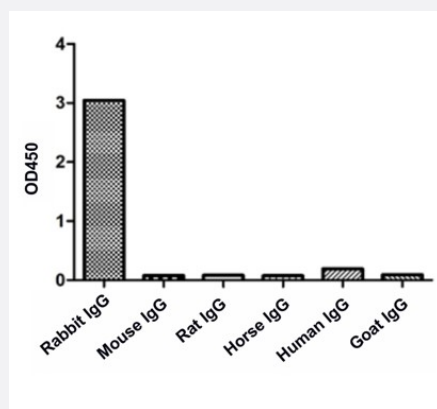
RecomAb™

Rabbit IgG Fc Gamma fragment VHH recombinant monoclonal antibody (HRP)

Catalog # RAB07207

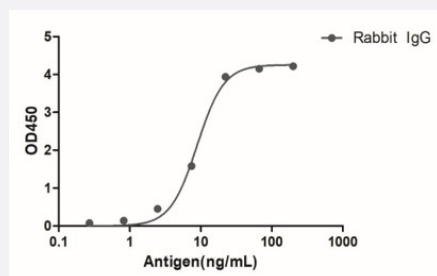
Size 100 ug

Applications



Enzyme-linked Immunoabsorbent Assay

ELISA of specificity for different species of IgG. Rabbit VHH IgG Fc Gamma recombinant monoclonal antibody (HRP) (Cat # RAB07207) was used as the detection antibody.



Enzyme-linked Immunoabsorbent Assay

A titer ELISA of Rabbit IgG. The plate was coated with different amounts of Rabbit IgG. Rabbit VHH IgG Fc Gamma recombinant monoclonal antibody (HRP) (Cat # RAB07207) was used as the detection antibody at 1:10000.

Specification

Product Description	Alpaca VHH recombinant monoclonal antibody raised against rabbit IgG. The antibody is conjugated with horseradish peroxidase.
Antibody Species	Alpaca
Immunogen	Recombinant Rabbit IgG
Reactivity	Rabbit

Specificity	Rabbit IgG Fc region
Form	Liquid
Conjugation	HRP
Purification	Protein A
Isotype	Alpaca IgG2b/2c
Recommend Usage	ELISA (1:10000-1:50000) Western Blot (1:10000-1:50000) The optimal working dilution should be determined by the end user.
Storage Buffer	In 10 mM PBS, pH 7.5 (0.05% sucrose, 0.1% trehalose, 0.01% proclin 300, 50% glycerol)
Storage Instruction	Store at -20°C. Aliquot to avoid repeated freezing and thawing.

Applications

- Western Blot

- Enzyme-linked Immunoabsorbent Assay

ELISA of specificity for different species of IgG. Rabbit VHH IgG Fc Gamma recombinant monoclonal antibody (HRP) (Cat # RAB07207) was used as the detection antibody.

- Enzyme-linked Immunoabsorbent Assay

A titer ELISA of Rabbit IgG. The plate was coated with different amounts of Rabbit IgG. Rabbit VHH IgG Fc Gamma recombinant monoclonal antibody (HRP) (Cat # RAB07207) was used as the detection antibody at 1:10000.